

Jackpot Racer Operator's Manual



Table of Contents

OPERATION	6
TRANSPORTING	6
HANDLING COMPONENTS	6
DISCONNECT POWER	6
GROUNDING	6
ELECTRICAL SHOCKS	6
MONITORS	6
VOLTAGE	6
POWER CORD	6
SURGE SUPPRESSOR	7
WATER AND OTHER LIQUID SOURCES	7
CONNECTORS	7
COMPUTER	7
VENTILATION	7
HAZARD TO EPILEPTICS	7
MANUAL	7
Product Specifications	8
ELECTRICAL POWER	8
TEMPERATURE	8
HUMIDITY	8
DIMENSIONS	8
Fuse Replacement Guide	9
12V POWER DISTRIBUTION	9
Setup	10
SAFETY NOTICE	10
UNPACK MATERIALS	10
REQUIRED TOOLS	10
NOTES	10
CABINET ASSEMBLY	11
Single Game Setup	11
Twin Game Setup	12

Jackpot Racer

CHECK ELECTRICAL SETTINGS	18
STARTUP GAME	18
MONITOR SETTINGS.....	19
Diagnostic and Adjustments	20
BASIC FUNCTIONAL TEST ON INITIAL POWER UP	21
TEST MENUS	22
Main Menu.....	22
Diagnostics	23
Pricing Adjustments	24
Game Settings	25
System Settings.....	26
Audits	27
Resets Menu	28
Volume.....	29
Calibration.....	30
Utilities	31
System Information.....	32
CHOOSING THE RIGHT PRICING ADJUSTMENTS FOR YOUR LOCATION	33
PC HARDWARE	34
PC HARD DRIVE RECOVERY	35
Troubleshooting	36
Technical Support.....	41
Electrical and Mechanical Illustrations.....	42
GAME EXPLODED DRAWING.....	43
MAIN CABINET EXPLODED DRAWING W/CABINET ART TABLE.....	44
MAIN CABINET EXPLODED PARTS TABLE.....	45
BIKE EXPLODED DRAWING W/ART TABLE	46
BIKE EXPLODED PARTS TABLE	47
HANDLEBAR EXPLODED DRAWING W/PARTS TABLE	48
HANDLEBAR MECH EXPLODED DRAWING W/PARTS TABLE.....	49
LINE FILTER EXPLODED DRAWING W/PARTS TABLE	50
RELAY EXPLODED DRAWING W/PARTS TABLE.....	51
AC PLATE EXPLODED DRAWING W/PARTS TABLE.....	52

Jackpot Racer

PCB PLATE EXPLODED DRAWING W/PARTS TABLE.....	53
DOUBLE WIDE MARQUEE EXPLODED DRAWING W/PARTS TABLE.....	54
LED RIBBON EXPLODED DRAWING W/PARTS TABLE.....	55
LED SENDER CARD EXPLODED DRAWING W/PARTS TABLE	56
ELECTRICAL DIAGRAMS.....	57

Safety

Operation

Before operating game, read this manual. Failure to properly install and operate this game could result in malfunction or accident. Operate the game in accordance with the manual.

Transporting

The cabinet is very heavy. Because the monitor is high, the cabinet is also very top-heavy. Use appropriate care when moving or transporting cabinet. It contains fragile glass and electronic components. Avoid rough handling.

Handling Components

Many components are extremely sensitive to handling, environmental and Electrostatic Discharge (ESD) events—especially the computer. Do not handle it roughly. Before servicing, call your distributor and inquire about the PC warranty. Use proper ESD procedures when servicing. Protect components from harmful environmental conditions, such as extreme temperatures, excessive moisture or other damaging effects.

Disconnect Power

Always turn the power off and unplug the unit before servicing or making adjustments unless otherwise instructed. Installing or repairing components while power is on can damage the components and void the warranty.

Grounding

Avoid electrical shock. Do not plug in AC power until you have inspected and properly grounded the unit. Only plug into a grounded, three-wire outlet. Do not use a “cheater” plug or cut off the ground pin on the line cord.

Electrical Shocks

There is no isolation transformer in the cabinet. Disconnect AC power before servicing. However, be aware that lethal voltages can remain in the electronic components even when AC power is disconnected. Use extreme caution when servicing. Verify that there is a working ground connection. If the unit sustains water damage, cease using it immediately and unplug AC power.

Monitors

The monitors contain no user serviceable parts. Do not attempt to service the monitors.

Voltage

Each game is manufactured for a specific AC voltage. Before applying power, verify that the AC voltage matches the game’s specified voltage rating.

Power Cord

If the power cord is damaged or lost, replace it with an identical cord as supplied by the manufacturer or an authorized service agent.

Surge Suppressor

It is recommended that you plug your game's power cord into a surge suppressor to help protect from power surges that may damage sensitive electronic components.

Water and Other Liquid Sources

Do not install game near sprinkler or other water jet sources. Do not use water jet to clean game. Keep minimum clearance behind game and wall for proper ventilation but also prevent access of liquid from spills and sprays from entering ventilation holes.

Connectors

When servicing machine, ensure all connectors mate properly. If connectors do not slip in easily, do not force them. Connectors are often keyed and only connect one way. Check for correct orientation.

Computer

The computer contains sensitive components, including a hard drive. Do not handle it roughly. Call your distributor before servicing its internal components. Ask about warranty information as it relates to the PC. Cycle AC power on or off with the cabinet power switch.

A dongle has been inserted into one of the USB ports. This is required for game play.

Do not remove the dongle except for troubleshooting purposes.

Ventilation

It is critical that the game is installed in a manner that allows for proper ventilation and air flow. Game must be installed such that there is a minimum amount of clearance between the wall or another game to allow good air circulation through the game cooling fans and vents.

Hazard to Epileptics

A small portion of the population has an epileptic condition that may cause seizures. Affected persons experience seizures while watching some television pictures or playing certain video games. People who have not had seizures may still have an undetected epileptic condition. If anyone in your family has experienced epilepsy symptoms (seizures or loss of awareness), consult your physician before using video games. While children play video games, a parent should observe. Be alert to the following symptoms: dizziness, altered vision, eye or muscle twitching, involuntary movements, loss of awareness, disorientation or convulsions. If you or your child experiences these symptoms, discontinue use immediately and consult your physician.

Manual

Keep this manual available and ready for use. If the game fails to function properly, turn off the machine and unplug the AC line cord. Contact your local distributor. You may not reproduce this document or any of its contents without written authorization from Raw Thrills, Inc.

Product Specifications

Electrical Power

United States, Canada (ETL)
Voltage: 120VAC / 60 Hz
Operating AC Current: 5 Amps

International (CE)
Voltage: 230VAC / 50/60Hz
Operating AC Current: 3 Amps

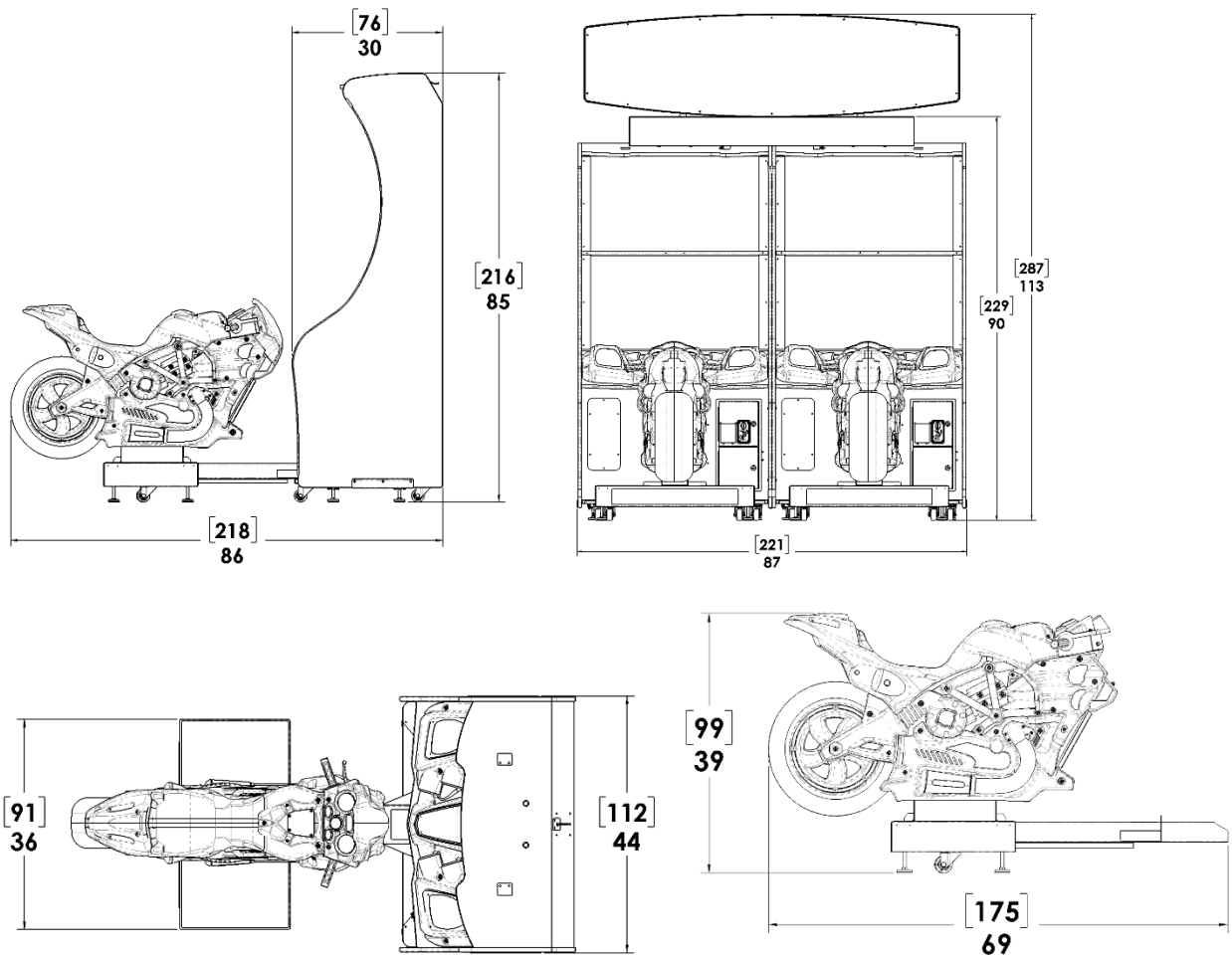
Temperature

50° F to 104° F
(10° C to 40° C)

Humidity

Must not exceed 95% relative humidity

Dimensions



Single: 85”H x 44”W x 86”D (216cm H x 112cm W x 219cm D)
Approximate weight 680lbs (309kg)
Twin: 113”H x 87”W x 86”D (287cm H x 221cm W x 219cm D)
Approximate weight 1360lbs (618kg)

Fuse Replacement Guide

NOTE: FOR CONTINUED PROTECTION AGAINST FIRE AND ELECTRICAL DAMAGE, USE ONLY SPECIFIED FUSE TYPE AND VALUE.

12V Power Distribution

Please see unit for specified fuse labeling.

Abbreviations:

5A 250V	5A, 250VAC Fast Acting 3AG Fuse	Littlefuse 0312005.MXP (or equivalent)
---------	---------------------------------	--

Setup

Safety Notice

A 6-foot step ladder (minimum height) is required as part of the installation process (for marquee installation). Make sure that you are familiar with the manual contents, game setup, and operations before you begin the installation process. Do not push or pull on the decorative items to move the game. Doing so can damage the decorative items. Be aware of your surroundings and individuals around you during the installation process for your safety and the safety of others. Work only in an area with sufficient lighting and a clean level surface.

Unpack Materials

1. Place the shipping crate(s) on a flat, stable surface.
2. Cut the banding straps and remove the cardboard lids.
3. Lift off the large cardboard containers surrounding the cabinet assembly and remove any shipping cleats.
4. Remove the keys from the coin door.
5. Check for shipping damage to the following:
 - Monitor(s)
 - Cabinet decals
6. Check the AC line cords for visible signs of damage.

Pay particular attention to the plug and line cord insulation.

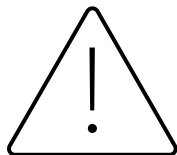
Required Tools

- Drill or multi-bit screwdriver
- #2 Philips bit
- T-27 Tamper Resist Torx Bit
- Socket set – **FOR TWIN SETUP**
- (2) 6ft Step Ladders (Minimum Height) – **FOR TWIN SETUP**

Notes

- For single cabinet setup only (1) person is required for installation.
- For twin cabinet setup (3) people are required for installation.

Cabinet Assembly



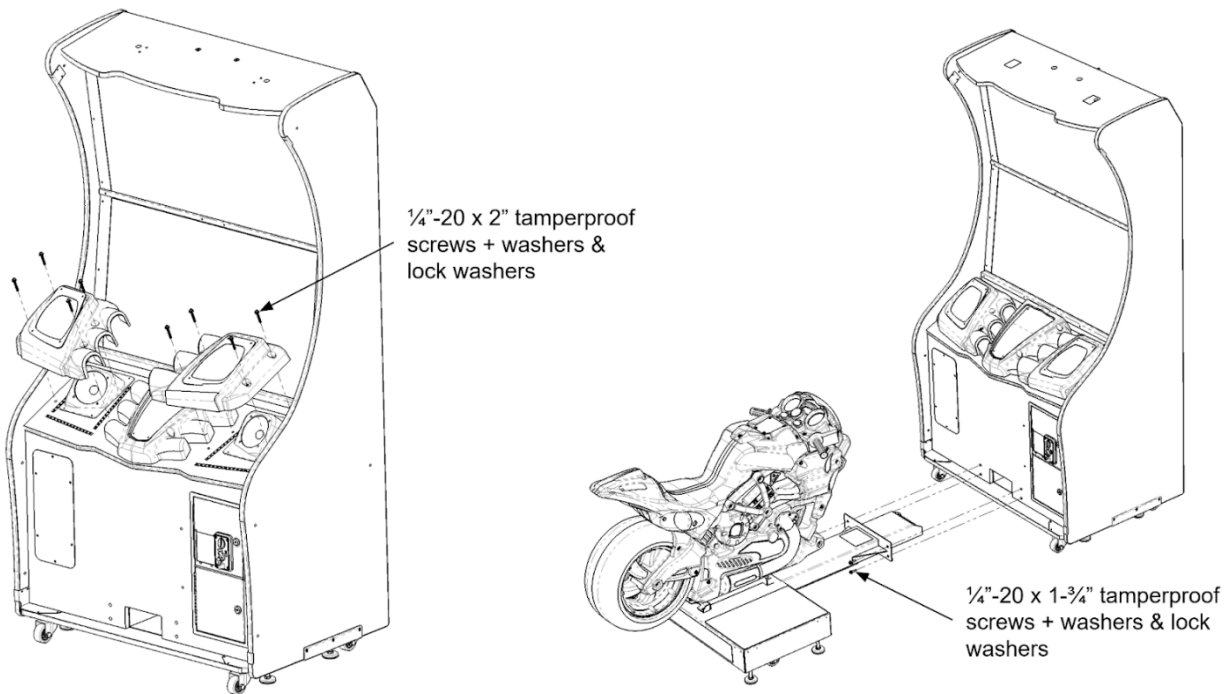
CAUTION

UNDER NO CIRCUMSTANCES SHOULD THIS GAME BE OPERATED UNLESS ALL INSTALLATION PROCEDURES HAVE BEEN COMPLETED AND ALL SAFETY FEATURES HAVE BEEN POSITIVELY TESTED AND ARE FULLY FUNCTIONAL!

*******It is recommended that the main cabinet be moved to or very near its desired operational location before beginning any of the setup tasks*******

Single Game Setup

1. Locate the box containing the main cabinet speaker covers and install them using (8) $\frac{1}{4}$ "-20 x 2" screws (plus washers and lock washers) included in the box.
2. Install the bike assembly by pushing it into the rectangular opening at the bottom of the main cabinet and securing it with the (4) $\frac{1}{4}$ "-20 x 1- $\frac{3}{4}$ " screws (plus washers and lock washers) included in the game bag.

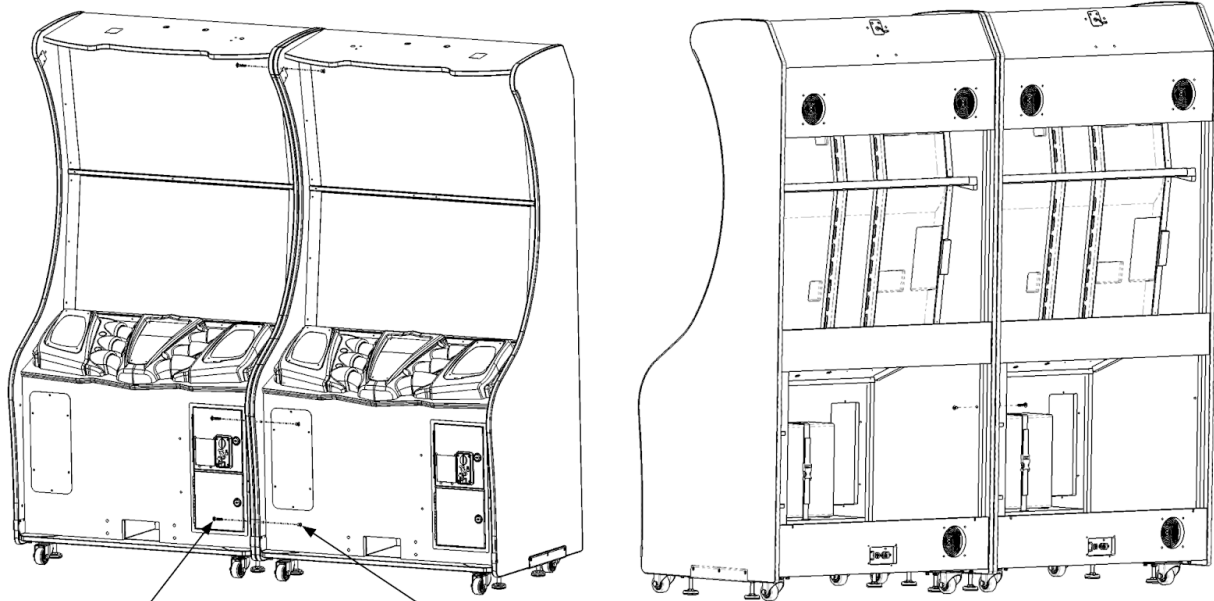


3. Remove the lower back door from the main cabinet and find the unconnected 24-pin and 18-pin connectors located near the rectangular opening. Plug them into the bike assembly's panel mounted connectors and reinstall the lower back door.
4. All leg levelers of the main cabinet and bike assembly should be lowered before game operation.

Jackpot Racer

Twin Game Setup

1. Locate the box(es) containing the double wide marquee and LED screen assembly included with the purchase of twin Jackpot Racer games. Push the two main cabinets together, line up the (4) holes in the side panels ((3) in the front, (1) in the back), and secure them together using (4) $\frac{1}{4}$ "-20 x $\frac{1}{2}$ " binding barrels and (4) $\frac{1}{4}$ "-20 x $1\frac{1}{2}$ " screws (plus washers).

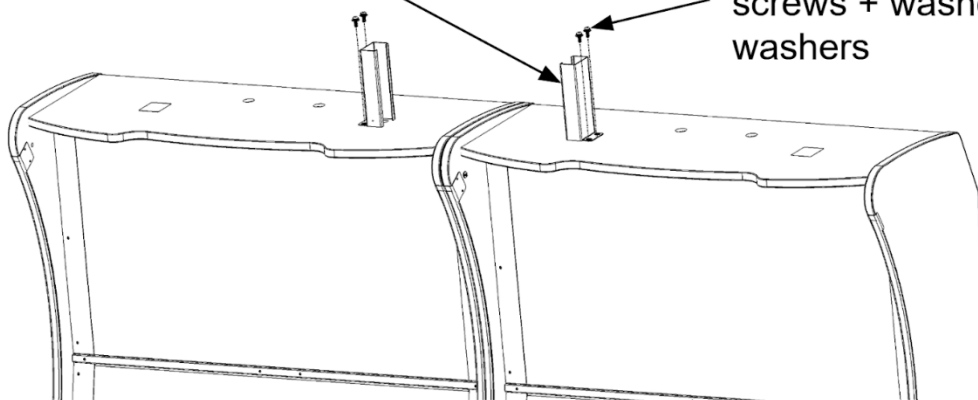


$\frac{1}{4}$ "-20 x $1\frac{1}{2}$ " tamperproof screws + washers $\frac{1}{4}$ "-20 x $\frac{1}{2}$ " binding barrels

2. Determine the final location of the game and lower the main cabinets' leg levelers before proceeding with the installation of the toppers. Also, remove all the back doors.
3. Remove the black, rectangular decals blocking the innermost mounting holes located on the tops of the main cabinets and install the (2) LED screen assembly mounting post brackets using (4) $\frac{1}{4}$ "-20 x $\frac{3}{4}$ " screws (plus washers and lock washers).

LED screen assembly
mounting post
brackets (R1-1412)

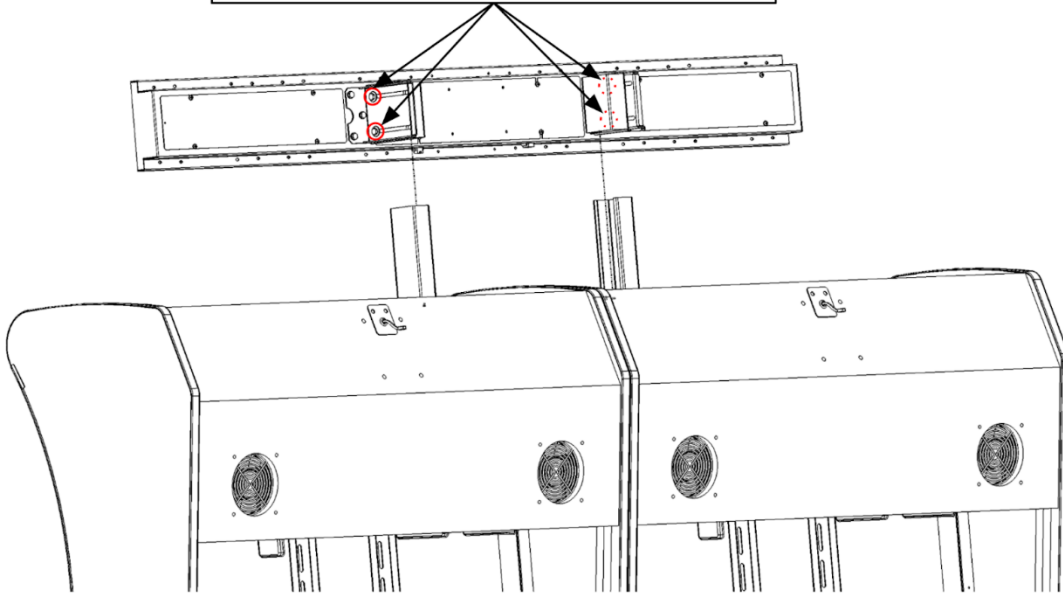
$\frac{1}{4}$ "-20 x $\frac{3}{4}$ " tamperproof
screws + washers & lock
washers



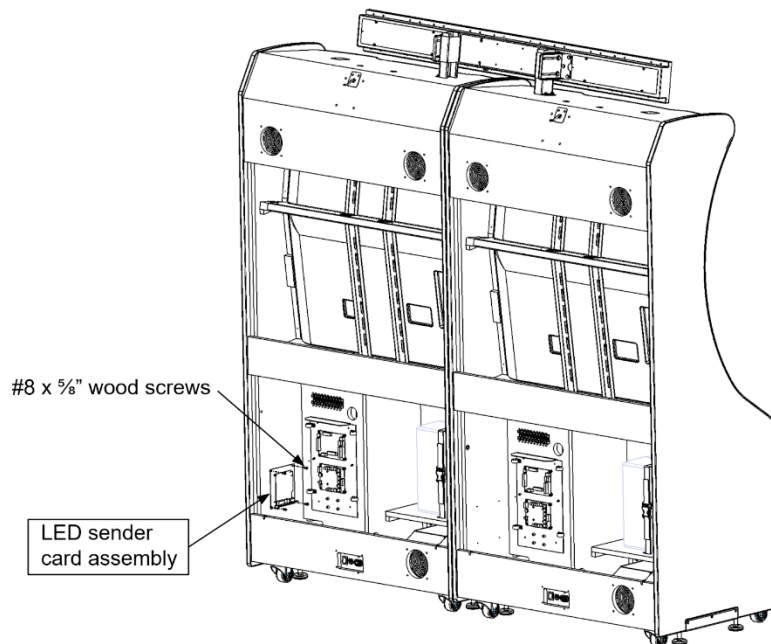
Jackpot Racer

4. Gently remove the LED screen assembly from its box and loosen the screws that connect the (2) sets of mounting and clamping brackets together ((4) screws total, use $\frac{3}{8}$ " socket). Using (2) ladders, lift the LED screen assembly over the (2) mounting post brackets installed on the tops of the main cabinet and lower the screen onto the posts. Position the screen just above the tops of the main cabinets, level it, and then tighten the screws to secure it into place. The screws should be located at the front of the slots in the mounting bracket, but the screen can be pushed forward if desired.

Loosen screws before install, lower assembly onto posts, tighten screws at front of slots

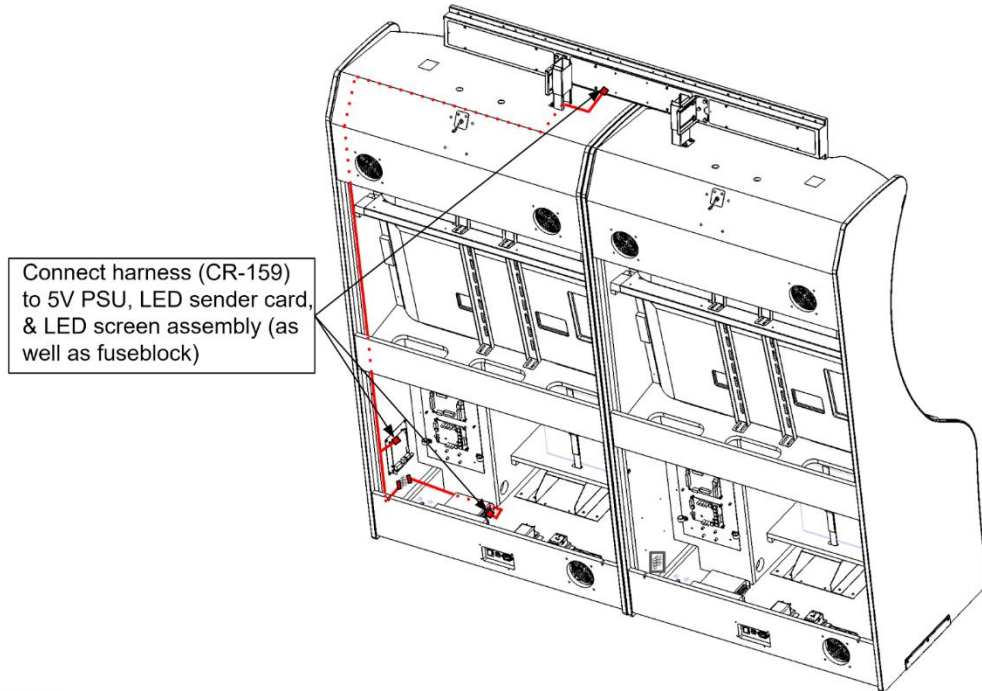


5. Locate the LED sender card assembly and mount it to the inside of the right panel of one of the main cabinets using (4) #8 x $\frac{5}{8}$ " wood screws. There are pilot holes provided for easy mounting.

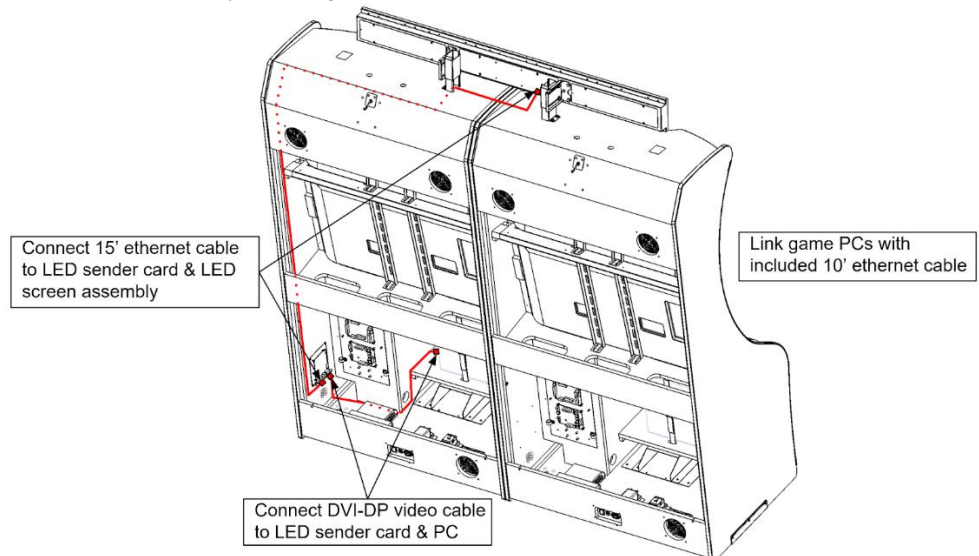


Jackpot Racer

6. Locate harness CR-159 and install it into the same cabinet. Connect the 4-pin square connector to the 5V PSU, the fast-on connectors to the fuseblock under the LED sender card, and the 4-pin rectangular connector to the sender card. From there, run the harness up the side panel and then over to the hole located under the mounting post bracket. Push the 6-pin connector through the hole and then plug it into the bottom of the LED screen assembly.

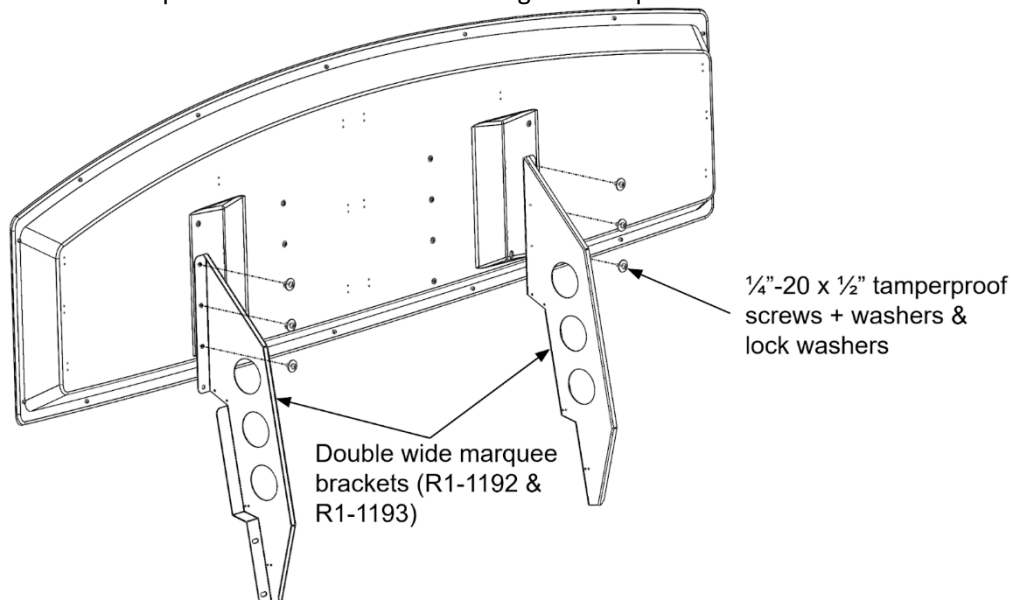


7. Locate the 15' ethernet cable and plug it into the leftmost ethernet port of the LED sender card. Run it up the same path as the harness and plug the other end into the bottom of the LED screen assembly. Then locate the 6' DVI-DisplayPort video cable and plug the DVI connector into the LED sender card and the DP connector into the open DP port on the PC. Lastly, use the 10' ethernet cable included in the game bag to link the PCs of the two games. There are cutouts in the bottom, back panels of the main cabinets so that the ethernet cable can be routed between the two games, even when the back doors are installed. Note, a network hub or switch (not included) is needed to link together (3) or more (up to (8)) games.

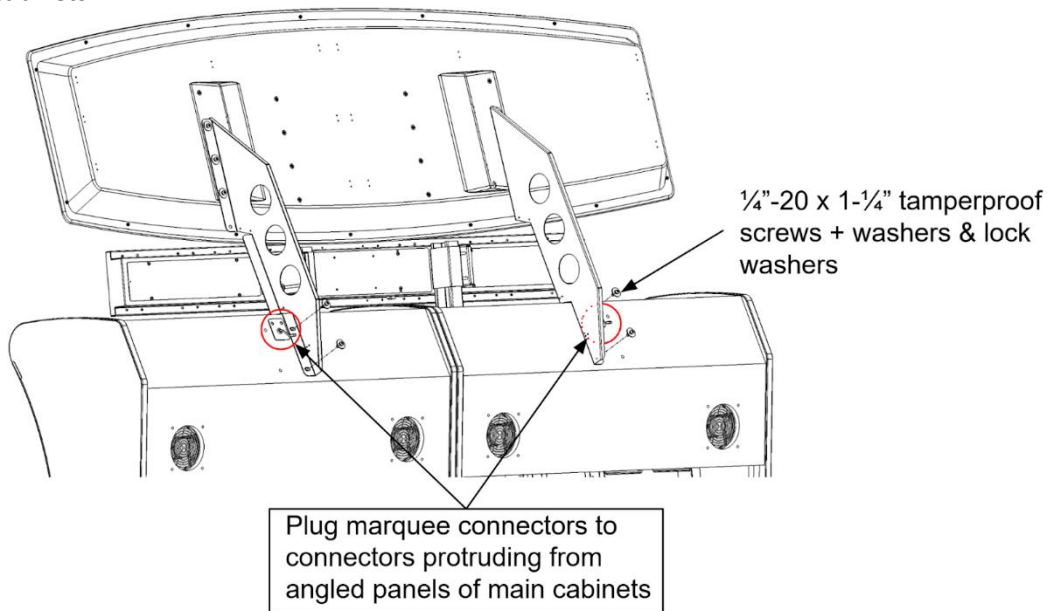


Jackpot Racer

- Remove the double wide marquee from its box and install the included brackets using (6) $\frac{1}{4}$ "-20 x $\frac{1}{2}$ " screws (plus washers and lock washers). The bottom hole of each bracket and the top insert on each side of the marquee are unused when mounting the marquee above the LED screen assembly.

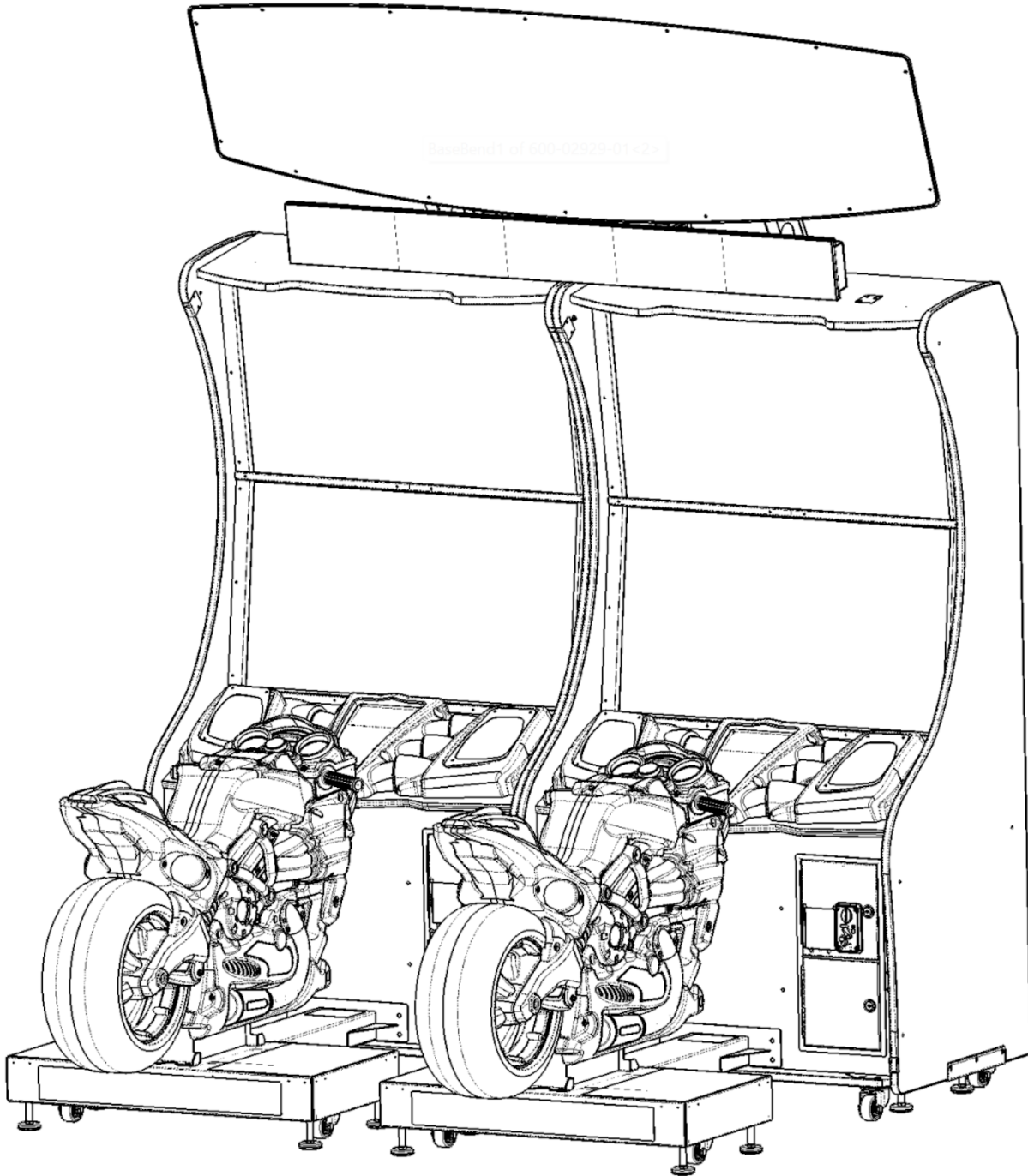


- Using (2) ladders, lift the marquee over the LED screen assembly and line up the slots of the brackets with the holes in the angled panels of the main cabinets. Have a third person behind the game secure the marquee into place using (4) $\frac{1}{4}$ "-20 x 1- $\frac{1}{4}$ " screws (plus washers and lock washers). Then plug the marquee connectors into the connectors protruding from the angled panels of the main cabinets.



Jackpot Racer

10. Follow the single cabinet setup instructions to complete the twin game installation. You will need to perform a monitor calibration once the games have been powered on. Cycle through the various modes until all (3) screens are displaying correctly.

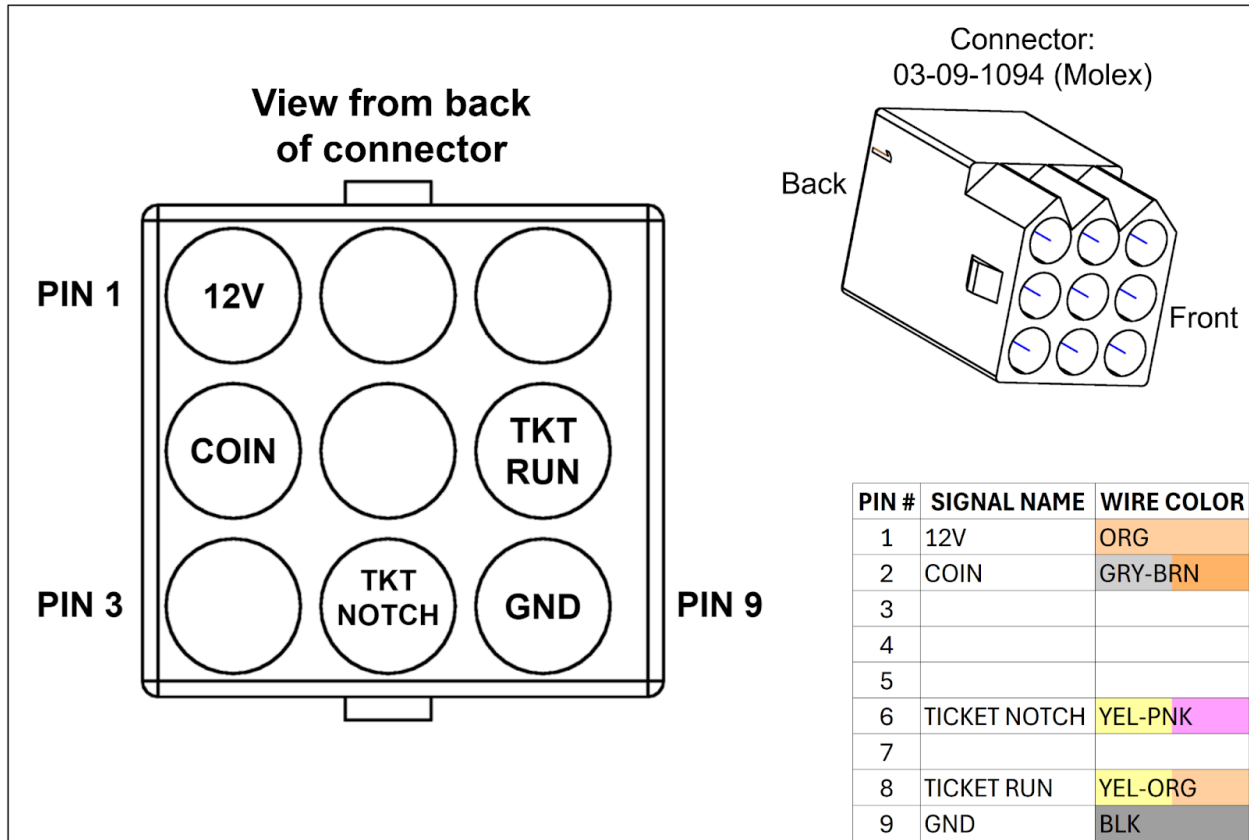


Card Reader Installation and Setup

UCL, or Universal Card Link, is a debit card standard established by the American Amusement Machine Association. Visit <https://coin-op.org/standardization/> for the latest UCL standard and manual information.

There is a supplied UCL connection that can be found inside the coin door/cashless door assembly.

The UCL connector uses pins 1, 2, 6, 8, and 9. The other pins are unused. The UCL connector can supply up to 1A at 12VDC.



Check Electrical Settings

1. Verify the voltage in the nearest AC outlet.
2. Verify the AC outlet ground connection is present and working.

Startup Game

1. Plug the cord into an AC outlet.
2. Turn the main cabinet power switch on.
3. Calibrate the monitors.
4. Calibrate the steering (follow onscreen prompts).
5. Calibrate the gas (follow onscreen prompts).
*****MACHINE IS NOT OPERATIONAL WITHOUT FIRST CALIBRATING THE HARDWARE*****
6. Verify the game and all components are operating normally. See *Basic Functional Test on Initial Power Up* in the *Diagnostics and Adjustments* section for the recommended procedure.
7. Complete the monitor setup for both monitors (next page).

*******IMPORTANT*******

PLEASE FOLLOW INSTRUCTIONS TO SET UP MONITORS

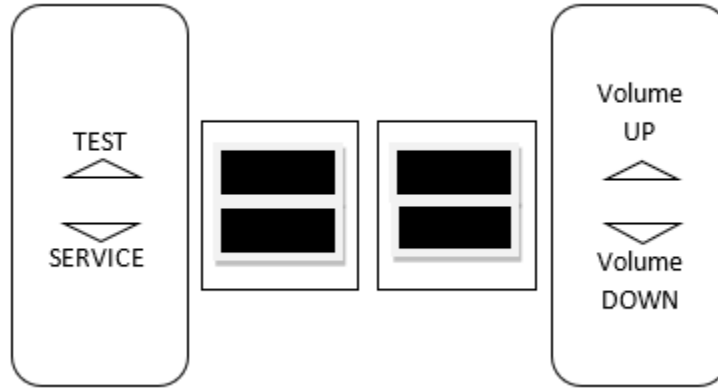
MONITOR SETTINGS

COMING SOON!

Diagnostic and Adjustments

The Service Button Panel has four buttons, three of which can navigate the menu system.

The control panel buttons can also advance through test menu screens.



Navigating the Test Menu	
Button	Action
TEST (Not in Test Menu)	Enters Test Menu
TEST (In Test Menu)	Selects Highlighted Option
SERVICE (On Main Menu)	Exits Test Menu
SERVICE (Not on Main Menu)	Cancel Selection
VOLUME UP/Tunes Button	Move Up
VOLUME DOWN/View Button	Move Down
Start Buttons	Selects Highlighted Option

When in the Pricing Menu, an on-screen message acknowledges changes or when you exit a selection without making a change.

Basic Functional Test on Initial Power Up

1. Enter the Input Test and verify all switch inputs are working.
2. Enter the Monitor Test and verify the monitor is working properly.
3. Enter the Sound Test and verify the audio works and is not distorted.
4. Enter the Light Test and verify that all the lights are working properly.
5. Enter the Coin Meter Test and verify the coin meter is working properly.
6. Enter the Watchdog Test and verify the game reboots.
7. Upon a successful reboot, you are ready to adjust pricing, volume and other functions.

Test Menus

Main Menu

Choose from all available operator settings and menus here. You can use the test menu bracket and volume buttons to navigate. The View/Tunes buttons also are available to use for easier navigation through these menus.

JACKPOT RACER VERSION L0	OCTOBER 20, 2025 01:53:37 PM	SERIAL #: 1111 CABINET TYPE: DUAL SCREEN
MAIN MENU		BOTTOM SCREEN
DIAGNOSTICS		Verify or diagnose the operation of all game functions.
PRICING AND PAYOUT ADJUSTMENTS		
GAME SETTINGS		
SYSTEM SETTINGS		
AUDITS		
RESETS		
VOLUME		
CALIBRATION		
UTILITIES		
SYSTEM INFORMATION		
EXIT		CURRENT SETTINGS CURRENCY INPUT: CARD SWIPE COST PER GAME: \$1.00 TICKET VALUE: \$0.01000 TARGET PAYOUT PERCENT: 40% TARGET TICKETS PER GAME: 40
Navigation: Vol +/- or Tunes/View Select Item: Test or Start Go Back: Service		

Diagnostics

Verify or diagnose the operations of all game functions.

JACKPOT RACER VERSION 1.0	OCTOBER 21, 2025 09:06:39 AM	SERIAL #: 1111 CABINET TYPE: DUAL SCREEN
DIAGNOSTICS		BOTTOM SCREEN
<input type="checkbox"/> INPUT TEST <input type="checkbox"/> VIDEO TEST <input type="checkbox"/> AUDIO TEST <input type="checkbox"/> NETWORK TEST <input type="checkbox"/> CABINET LIGHTS TEST <input type="checkbox"/> METER TESTS <input type="checkbox"/> TICKET TEST <input type="checkbox"/> WATCHDOG TEST <input type="checkbox"/> EXIT	Test input hardware such as switches.	
	CURRENT SETTINGS CURRENCY INPUT: CARD SWIPER COST PER GAME: \$1.00 TICKET VALUE: \$0.01000 TARGET PAYOUT PERCENT: 40% TARGET TICKETS PER GAME: 40	
Navigation: Vol +/- or Tunes/View Select Item: Test or Start Go Back: Service		

- **Input Test:** Test input hardware such as switches.
- **Video Test:** Checks color pattern of monitors.
- **Audio Test:** Test audio using 100Hz and 1000Hz.
- **Network Test:** Test the connectivity between linked games.
- **Cabinet Lights Test:** Tests all LED cabinet lighting together and individually.
- **Meter Test:** Test the functionality of the mechanical coin meter inside the cabinet.
- **Ticket Test:** Test the functionality of the ticket mech.
- **Watchdog Test:** Test the functionality of the Watchdog (if successful the cabinet will power off and reboot).

Jackpot Racer

Pricing Adjustments

Set pricing and payout adjustments for game operation.

JACKPOT RACER VERSION 1.0		OCTOBER 20, 2025 01:50:58 PM	SERIAL #: 1111 CABINET TYPE: DUAL SCREEN
PRICING & PAYOUT ADJUSTMENTS		BOTTOM SCREEN	
FREE PLAY	OFF	Turn freeplay mode on or off. Adjustments will be synced.	
CURRENCY INPUT	CARD SWIPES		
CURRENCY TYPE	US DOLLARS		
SWIPE VALUE	\$1.00		
SWIPES TO PLAY	1 [\$1.00]		
MAX CREDITS	30		
PAYOUT PERCENT	40%		
TICKET VALUE	\$0.01000		
FIXED TICKETS	OFF		
STARTING JACKPOT	500		
MERCY TICKETS	2	CURRENT SETTINGS CURRENCY INPUT: CARD SWIPES COST PER GAME: \$1.00 TICKET VALUE: \$0.01000 TARGET PAYOUT PERCENT: 40% TARGET TICKETS PER GAME: 40	
TICKET CAP	1		
TWO POINT TICKETS	OFF		
EXIT			
Navigation: Vol +/- or Tunes/View Select Item: Test or Start Go Back: Service			

- **Freeplay:** Turn free play mode on or off.
- **Currency Input:** Change the currency input (Cash/Tokens/Card Swipes/Card Taps).
- **Currency Type:** Change the currency type.
- **Currency Value:** Change the money value of the coins/tokens/card swipes/card taps.
- **Cost to Play:** Adjust the amount of coins/tokens/card swipes/card taps to start a game.
- **Max Credits:** Adjust the maximum number of credits.
- **Payout Percent:** Set targeted payout percentage.
- **Ticket Value:** Set the value of your tickets.
- **Fixed Tickets:** Force identical payout for each play.
- **Starting Jackpot:** Set the initial ticket value for the progressive jackpot.
- **Mercy Tickets:** Set the minimum number of tickets awarded each play.
- **Ticket Cap:** Adjust the maximum number of tickets.
- **Two Point Tickets:** Allows a single ticket dispensed to be worth 2 points in a game.

Game Settings

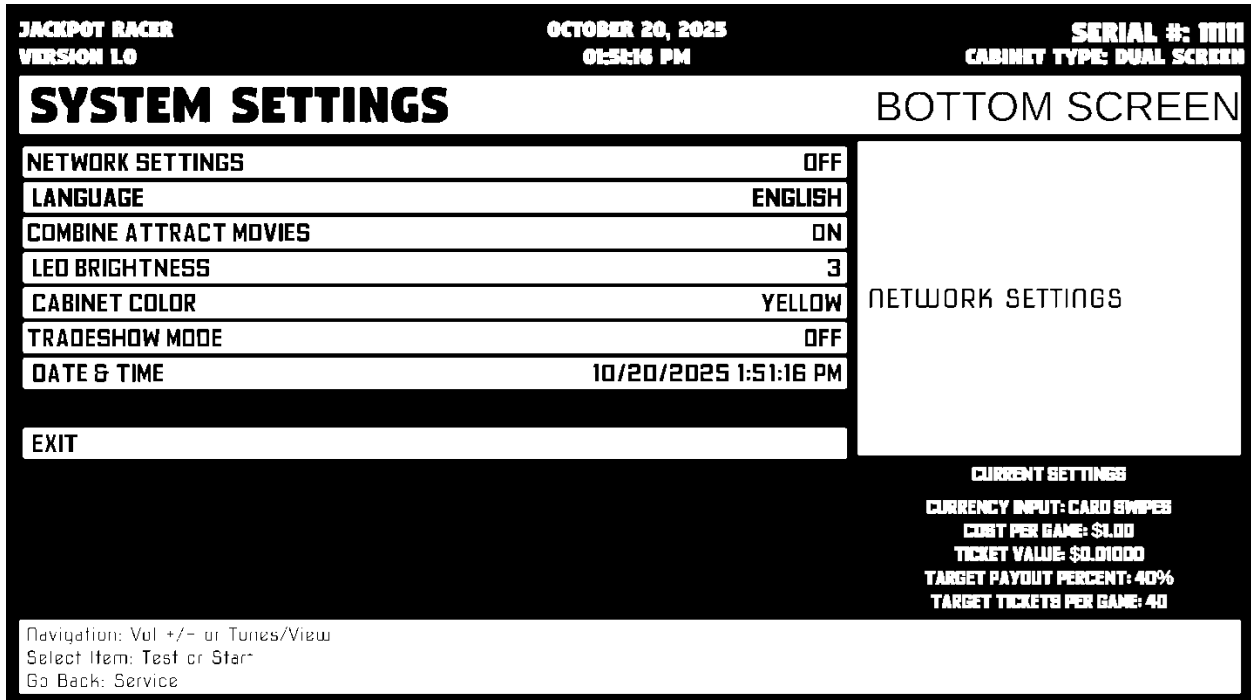
Adjust game settings for operation.

JACKPOT RACER		OCTOBER 20, 2025	SERIAL #: 1111
VERSION 1.0		01:51:00 PM	CABINET TYPE: DUAL SCREEN
GAME SETTINGS		BOTTOM SCREEN	
AMUSEMENT MODE	OFF	Mode with no ticket payouts. Audits will be reset and adjustments will be synced.	
ALLOW JOIN DURING RACE	ON		
METRIC UNITS	ON		
ATTRACT MUSIC	ALWAYS		
UPGRADES	ON		
AUTO START	ON		
VOICEDOVER	ON		
PICKUPS	ON		
PLAYER ASSIST	ON		
EXIT		CURRENT SETTINGS CURRENCY INPUT: CARD SWIPER COST PER GAME: \$1.00 TICKET VALUE: \$0.01000 TARGET PAYOUT PERCENT: 40% TARGET TICKETS PER GAME: 40	
Navigation: Vol +/- or Tunes/View Select Item: Test or Start Go Back: Service			

- **Amusement Mode:** Mode with no ticket payouts. Audits will be reset and adjustments will be synced.
- **Allow Join During Race:** Allow other machines to join a race in progress.
- **Metric Units:** Use metric units like KPH and meters.
- **Attract Music:** How often should music play in attract mode.
- **Upgrades:** Turn on or off (default on). When on, this allows the players to purchase upgrades before the start of a race.
- **Auto Start:** Start the game when player inserts credits.
- **Voiceover:** Enable/disable voiceovers during a race and in the menus.
- **Pickups:** Enable/disable pickups.
- **Player Assist:** Assist player with auto gas if they don't use the gas pedal.

System Settings

This menu allows for customization of various system settings.



- **Network Settings:** Turn on for linked games (leave off if operating a single game). **The cabinets must be numbered in order from left to right. This ensures gameplay elements display correctly.**
- **Language:** Set in-game language.
- **Combine Attract Movies:** Combine attract movie screens across networked games.
- **LED Brightness:** Adjust the brightness of the cabinet LED lights.
- **Cabinet Color:** Specify the color of the cabinet plastics.
- **Date & Time:** Use to set the date and time.

Jackpot Racer

Audits

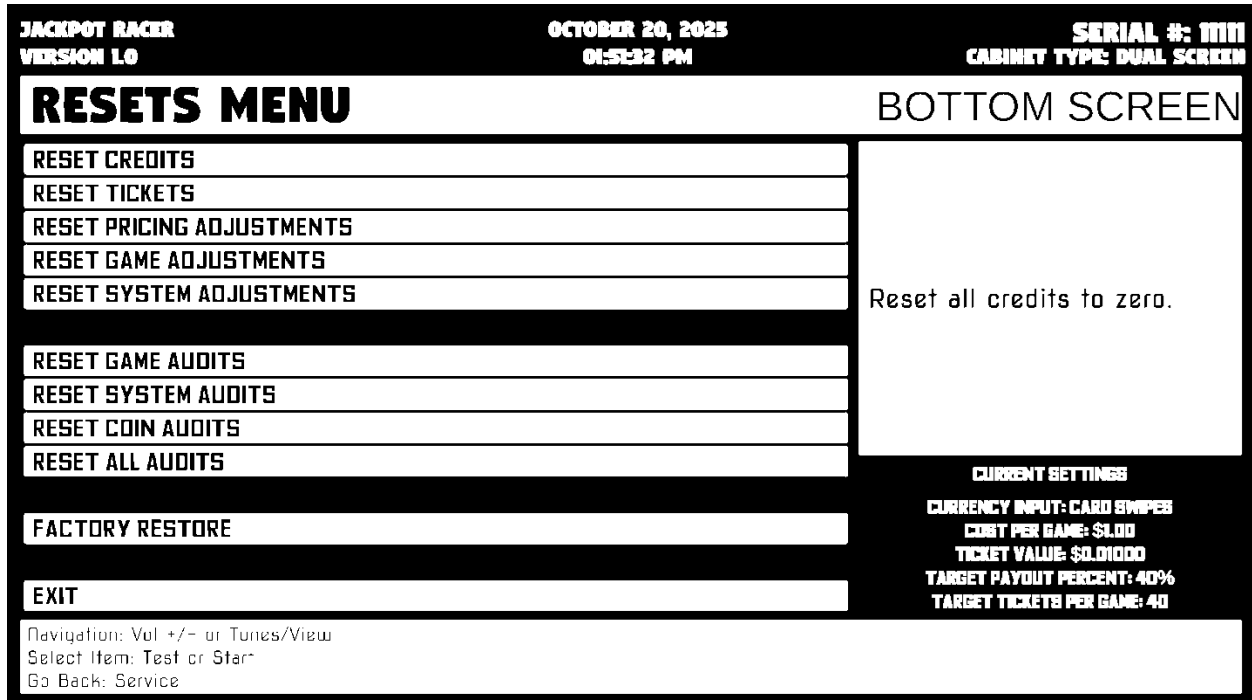
Audit screen helps assess game performance, find intermittent problems, decide whether to adjust game difficulty and help maximize game earnings.

There are no special menu options for this test menu entry.

JACKPOT RACER VERSION 1.0	OCTOBER 20, 2025 01:51:26 PM	SERIAL #: 1111 CABINET TYPE: DUAL SCREEN
GAME AUDITS		BOTTOM SCREEN
PAGE 1 OF 19		
1.6 Monday, October 20, 2025 1:56:36 PM		
coinTotalSpent	53	
coinTotalUnspentCashbox1	0	
coinTotalUnspentCashbox2	0	
spent	35 (66.0%)	
spentOnContinue	6 (11.3%)	
coin1Pulses	0	
coin2Pulses	0	
coinCountLifetime	0	
drv1Pulses	0	
drv2Pulses	0	
drv1PulsesLifetime	0	
drv2PulsesLifetime	0	
serviceCredits	53	
ticketsDispensed	369	
ticketsQueued	0	
target Tickets Per Credit	46	
Average Tickets Per Credit	6.962264	
target Payout Percent	6.4	
Navigation: Vol +/- or Tunes/View Go Back: Service		CURRENT SETTINGS CURRENCY INPUT: CARD SWIPES COST PER GAME: \$1.00 TICKET VALUE: \$0.0000 TARGET PAYOUT PERCENT: 40% TARGET TICKETS PER GAME: 40

Resets Menu

Resets menu allows for the resetting of various machine settings and audits.



- **Reset Credits:** Reset credits to zero (0).
- **Reset Tickets:** Clears out all tickets owed on the game.
- **Reset Pricing Adjustments:** Reset all pricing settings to default.
- **Reset Game Adjustments:** Reset all game settings to default.
- **Reset System Adjustments:** Reset all system settings to default.
- **Reset Game Audits:** Reset all game related audits.
- **Reset System Audits:** Reset all system audits.
- **Reset Coin Audits:** Reset all coin audits.
- **Reset All Audits:** Reset all audits.
- **Factory Restore:** Restore game to default factory settings.

Volume

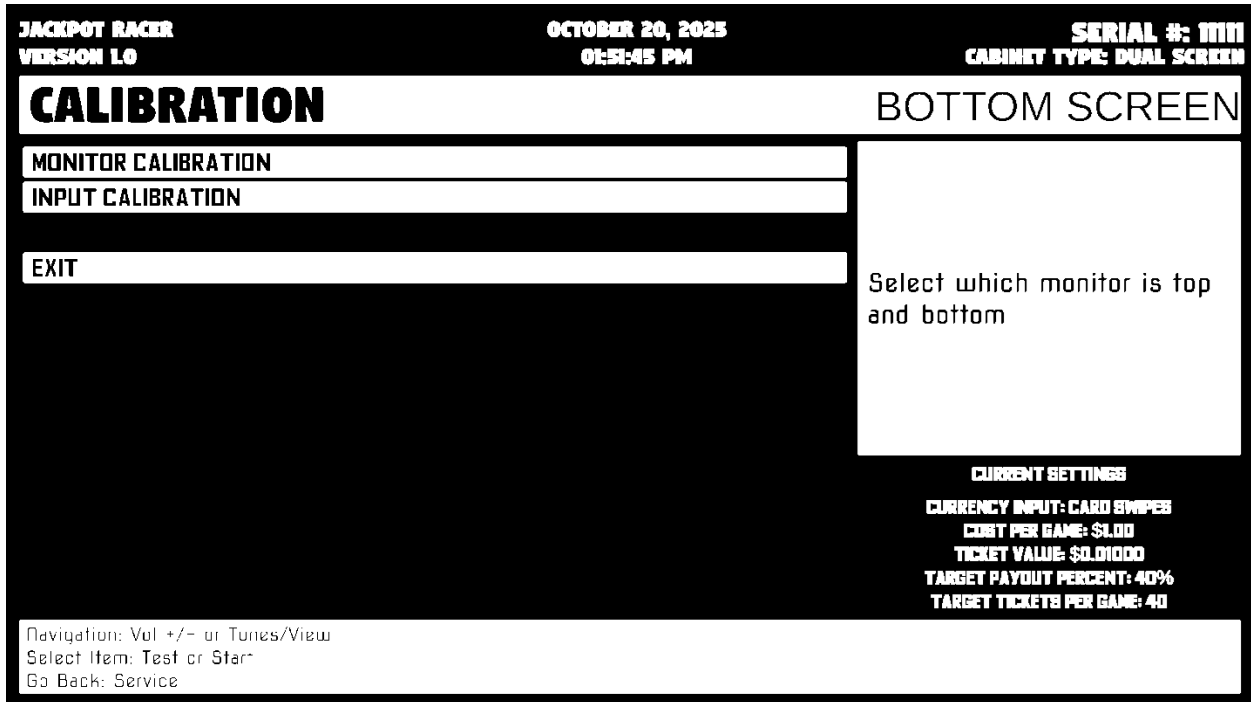
Volume adjustments.

JACKPOT RACER		OCTOBER 20, 2025	SERIAL #: 1111
VERSION 1.0		01:52:39 PM	CABINET TYPE: DUAL SCREEN
VOLUME		BOTTOM SCREEN	
GAME VOLUME	17/25	Adjust the volume during gameplay.	
ATTRACT VOLUME	14/25		
CREDIT VOLUME	14/25		
EXIT			
Navigation: Vol +/- or Tunes/View Select Item: Test or Start Go Back: Service		CURRENT SETTINGS CURRENCY INPUT: CARD SWIPE COST PER GAME: \$1.00 TICKET VALUE: \$0.01000 TARGET PAYOUT PERCENT: 40% TARGET TICKETS PER GAME: 40	

- **Game Volume:** Adjust the volume during gameplay (from 0 to 20).
- **Attract Volume:** Adjust the volume during the attract mode sequences (from 0 to 20).
- **Credit Volume:** Adjust the volume of the credit chime (from 0 to 20).

Calibration

Calibration of hardware.



- **Monitor Calibration:** Press VIEW to cycle outputs of Top Monitor Display, Bottom Monitor Display, and if present, LED Marquee Display.
- **Input Calibration:** Calibrate the input POTS such as steering.

Utilities

Miscellaneous operator tools.

JACKPOT RACER VERSION 1.0	OCTOBER 20, 2025 01:51:52 PM	SERIAL #: 1111 CABINET TYPE: DUAL SCREEN
UTILITIES		BOTTOM SCREEN
COPY AUDITS AND LOGS TO USB	<p>Copy all audits and diagnostics to USB drive.</p>	
VIEW MESSAGE LOG		
VIEW ERROR LOG		
VIEW ENGINE LOG		
SYNC ADJUSTMENTS TO ALL CABINETS		
EXIT		
CURRENT SETTINGS CURRENCY INPUT: CARD SWIPER COST PER GAME: \$1.00 TICKET VALUE: \$0.01000 TARGET PAYOUT PERCENT: 40% TARGET TICKETS PER GAME: 40		
Navigation: Vol +/- or Tunes/View Select Item: Test or Start Go Back: Service		

- **Copy audits and logs to USB:** Copy all audits and logs to USB drive.
- **View Message Log:** Examine logged messages from the game.
- **View Error Log:** Examine error messages from the game.
- **View Engine Log:** Examine game engine messages.
- **Sync Adjustments to All Cabinets:** Sync all game, pricing, and volume settings with all networked games.

Jackpot Racer

System Information

This screen allows you to see various information about the software and hardware.

- Serial Number
- Software Revision
- Build Date
- RIO PCB
- RIO Firmware
- Dongle Version
- Cabinet Type
- Game Template

There are no special menu options for this test menu entry.

JACKPOT RACER VERSION L0	OCTOBER 20, 2025 01:32:12 PM	SERIAL #: 1111 CABINET TYPE: DUAL SCREEN
SYSTEM INFORMATION		BOTTOM SCREEN
PAGE 3 OF 3 (2526, 1449) (2563, 1666) (2340, 2109) stano systemctl --no-page -l status pulseaudio.service head -n 50 usb devices		CURRENT BETTING CURRENCY INPUT: CARD SWIPES COST PER GAME: \$1.00 TICKET VALUE: \$0.0000 TARGET PAYOUT PERCENT: 40% TARGET TICKETS PER GAME: 40
Navigation: Vol +/- or Tunes/View Go Back: Service		

Choosing the Right Pricing Adjustments for Your Location

Card Swipe Locations

- Make Sure Your Game is Set to **Swipes Mode**:
 1. Hold the Test Button for 2 seconds to enter the Test Menu.
 2. Select “Pricing Adjustments” from the menu.
 3. Select “Currency Input” from the menu.
 4. Select “Card Swipes” from the menu.
 5. Exit out of “Currency Input” menu.
 6. While back in “Pricing Adjustments” menu, set “Swipe Value” to the currency equivalent of your swipe, or the payout will be incorrect. **THIS SETTING IS EXTREMELY IMPORTANT!** (Example: If the card swipe is worth \$1.50 in your card system, set the swipe value to \$1.50 as well).

Coin/Token Locations

- Make Sure Your **Pricing & Coin Value** are Correct:
 1. Hold the Test Button for 2 seconds to enter the Test Menu.
 2. Select “Pricing Adjustments” from the menu.
 3. Select “Currency Input” from the menu.
 4. Select “Cash” or “Tokens” from the menu.
 5. Exit out of “Currency Input” menu.
 6. While back in “Pricing Adjustments” menu
 - a. Select “Coins to Play” and set the desired amount of coins per game of Fast and Furious Arcade.
 - b. After setting the coins per play, set “Coin Value” to the currency equivalent of your coin, or the payout will be incorrect. **THIS SETTING IS EXTREMELY IMPORTANT!** (Example: If your coin is worth \$0.25, set “Coin Value” to \$0.25 as well).

PC Hardware

Your *Jackpot Racer* game uses a **Lenovo M70t Desktop PC with an RTX3050 video card.**



(above: Lenovo M70t Desktop PC)

NOTICE

WARNING: DO NOT ENTER THE BIOS SETTINGS MENU! Modifying the BIOS settings will cause your game to stop functioning. In order to boot, new security features verify the BIOS settings against factory settings, including timestamp.

PC Hard Drive Recovery

Symptoms requiring a PC hard drive recovery include:

- File test reports bad or missing files.
- Game fails to finish loading during setup.
- After resetting the AC power, an error is reported.
- Erratic Game or Attract Mode behavior.

The only way to repair corrupt files is to reinstall the software as described below:

Computer

The computer contains sensitive components. Do not handle roughly. Contact your distributor before servicing its internal components. Ask about warranty information as it relates to the PC.

Do **not** use the PC on/off switch. Turn AC power on or off with the cabinet power switch.

Steps to reinstall the software (the game ships with (1) USB drive which is used in the steps below):

(USB Thumb Drive is used on the *Lenovo M70t*)

*****ATTENTION: An approved “Business Account” on rawthrills.com is required to complete software installation. Please complete account activation before installing software!*****

*****See website for details: <https://rawthrills.com/raw-web/login>*****

1. With game and PC on, verify that the RIO2 board has power. If not, see Troubleshooting.
2. Open the upper back door of the cabinet.
3. Insert the recovery USB thumb drive (included in your game) into an open USB port on the PC.
4. Turn cabinet power switch to OFF. Wait 30 seconds.
5. Turn cabinet power switch to ON. Wait for install menu to load.
6. Once the install menu has loaded, press the Test button on the service bracket to select the installation program and then press the Test button to confirm that you want to continue with the installation.
7. Follow on screen instructions to begin recovery.
8. If recovery does not begin, check to ensure USB Drive is inserted correctly and is not damaged.
9. Initial software loading may take several minutes. Check progress periodically.
Do not interrupt power or reset the game during recovery.
10. When software has been loaded, a message indicates that restore is complete. When instructed to remove USB Drive, wait 15 seconds then remove the drive from the PC.
11. Turn cabinet power switch off. Wait 30 seconds. Turn the cabinet on again.



12. Scan the QR code to the left or [click here \(if viewing on electronic device\)](#) for instructions on completing setup.

Troubleshooting

Warning: Review the Safety section before making any adjustments to the game.

Problem	Possible Cause	Solution
Game will not power up.	Game not plugged in.	Plug game into AC outlet.
	Game not turned on.	Turn on main power switch.
	Game fuse is blown.	Check and replace fuse. See Specification section for fuse values.
	No power to receptacle.	Test AC outlet and plug game into powered outlet.
	PC BIOS set incorrectly.	See BIOS Settings section.
	Flash Drive Installer is left connected to PC.	Disconnect Flash Drive Installer and power cycle the game.
Buttons/Gas do not work.	Faulty micro switch.	Replace the micro switch on the joystick/button and re-test. Verify that the wires are connected to the correct spades on the micro switch.
	Faulty wiring.	Disconnect the cabinet from AC power. Verify that all wires are firmly connected to each joystick/button and the PCB. Verify that no wires are frayed or improperly shorting to ground. Verify that wires are connected to the correct spades on the micro switches.
	Faulty PCB.	Ensure all connections to PCB are secure. Replace PCB if faulty.

Problem	Possible Cause	Solution
<p>Neither buttons nor audio work.</p>	<p>PCB connected to faulty USB port (boot message may indicate not detected)</p>	<p>To test a USB port, turn off the game, disconnect the device from the port, and then connect the game dongle to the port. Reboot the game. A No Dongle message indicates the port is bad. If the game starts, the port is working. After the test, reconnect all devices to the correct USB ports and reboot.</p>
<p>No sound or bad sound.</p>		<p>Check connection to speakers.</p>
	<p>Bad connection.</p>	<p>Verify 1/8" audio cable is fully inserted in both the PC and the audio amplifier.</p>
	<p>Volume set too low.</p>	<p>Use VOL UP button on Test panel to raise volume</p>
	<p>Faulty wiring.</p>	<p>Verify all wires are firmly connected to the speakers, PCB, and green computer audio port. Verify that each wire is connected to the correct port and no wires are frayed or improperly shorting to ground.</p>
	<p>Blown speakers.</p>	<p>Remove the grill and inspect each speaker for visible damage. Run the Sound Test from System Tests in the Operator Menu to verify each speaker is working.</p>
	<p>Reversed wires.</p>	<p>A weak or low muffled sound is a sign of reversed speaker wires. Check for reversed wires on each speaker.</p>
	<p>Faulty PCB.</p>	<p>To verify audio is working at the computer, connect stereo headphones to the green computer audio port.</p>

Jackpot Racer

Problem	Possible Cause	Solution
Constant low audio hum.	Faulty power supply.	Check external DC supply and the PC supply.
	Open ground.	Check all ground wires in cabinet. Ensure AC wall outlet is properly grounded
Game does not load.	PC hard drive failure.	Recover hard drive. See Flash Installer Document or contact your distributor for the latest software revision.
PC Drive test reports “bad” or “missing” files.		
Game fails to finish loading.		
After resetting, game still reports an error.		
Erratic game mode or attract mode.		
WARNING! Data files Corrupted. (Game Operation May Become Unstable.) Use “Test” Switch to Enter Test Mode and Run “File Test.”		
Game Resets	Bad file.	Run Flash Installer.
No Video	PC not turned on.	Turn PC power switch on. Ensure IEC cable tightly plugged in. Trace cable back to source to ensure continuity.
	Video cable not secure.	Check and secure DVI or HDMI connector to Monitor. Check and secure DVI or HDMI connector to PC.
Coin meter does not click during test.	No pulse to meter.	Check wiring from meter to PCB board.
	Faulty meter.	Replace coin meter.
	Blown fuse(s)	Replace 12VDC fuse(s) in cabinet.

Problem	Possible Cause	Solution
Dongle Not Present	Dongle missing or disconnected.	Find dongle cable and reseal in USB port.
	Faulty USB port.	Insert dongle cable in different USB port.
Improper number of credits given when coins or bills are inserted.	Incorrect setting in Pricing Adjustments.	Adjust pricing settings.
	Faulty wiring.	Disconnect cabinet from AC power. Verify wires are firmly connected to coin mech and bill validator and ground wires are properly connected. Verify no wires are frayed or shorting to ground.
	Faulty coin mech.	Verify coin mech is not jammed. Ensure coin mech is properly aligned and latched to coin door.
Exits Test Mode every 3 seconds.	Test button stuck in ON position.	Slide or toggle button off after Test Menu appears
Connect RIO Board or RIO Board Missing or RIO Disconnected.	USB cable disconnected.	Check USB connection from PC to RIO board.
	No Power to RIO board.	Check for proper voltage (+5V, +12V) at RIO P1 connector.
File Error.	The game attempted to do a System Call but it failed (memory/file handle issue).	Reboot the cabinet.
Ticket Error. See Attendant. Tickets Owed.	The cabinet has run out of tickets. The number of tickets owed should be displayed.	Add tickets to empty dispenser(s).
Machine ID Conflict Error.	Networking is Enabled, but two or more of the connected cabinets are using the same Machine ID.	Go to "System Settings>Network Settings>Network Machine ID." All connected cabinets MUST be using a different "Network Machine ID."
Game keeps rebooting without starting.	Software was downgraded to a previous version.	Update game with a USB drive to latest version.

Jackpot Racer

Problem	Possible Cause	Solution
<p>LED Ribbon isn't working</p>	<p>Power cable disconnected.</p>	<p>Check power cable connection from LED Ribbon.</p>
	<p>RJ-45 cable not connected.</p>	<p>Verify RJ-45 cable is connected from LED Ribbon to LED sending card.</p>
	<p>Display port cable not connected.</p>	<p>Verify Display Port cable connected from LED sending card to PC.</p>
	<p>Blown or improperly seated fuse.</p>	<p>Check fuse and reseal or replace if needed.</p>
<p>Screens are not displaying correctly</p>	<p>Screens need to be calibrated.</p>	<p>Enter Monitor Calibration and cycle through the modes until all screens display correctly.</p>

Technical Support

For an authorized distributor near you, check the Raw Thrills website at www.rawthrills.com

Betson's Raw Thrills Technical Support Hotline

Phone: 1-800-753-2513

FAX: 1-201-438-5019

Email: rtsupport@betson.com

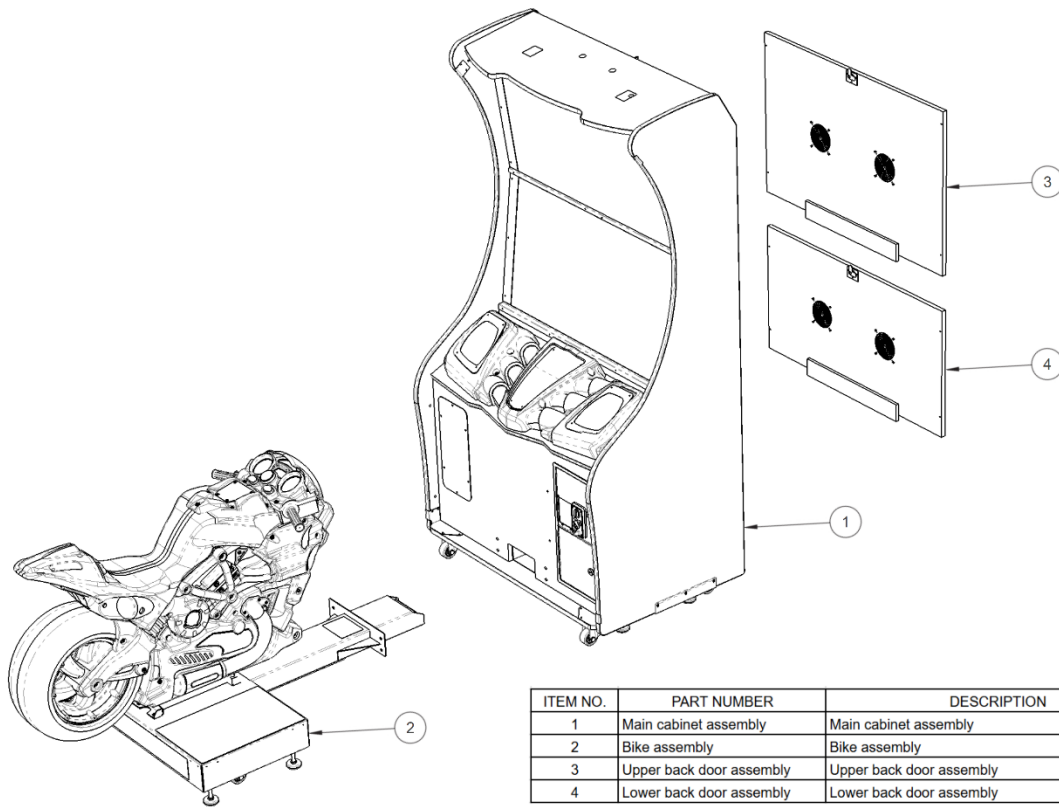


Electrical and Mechanical Illustrations



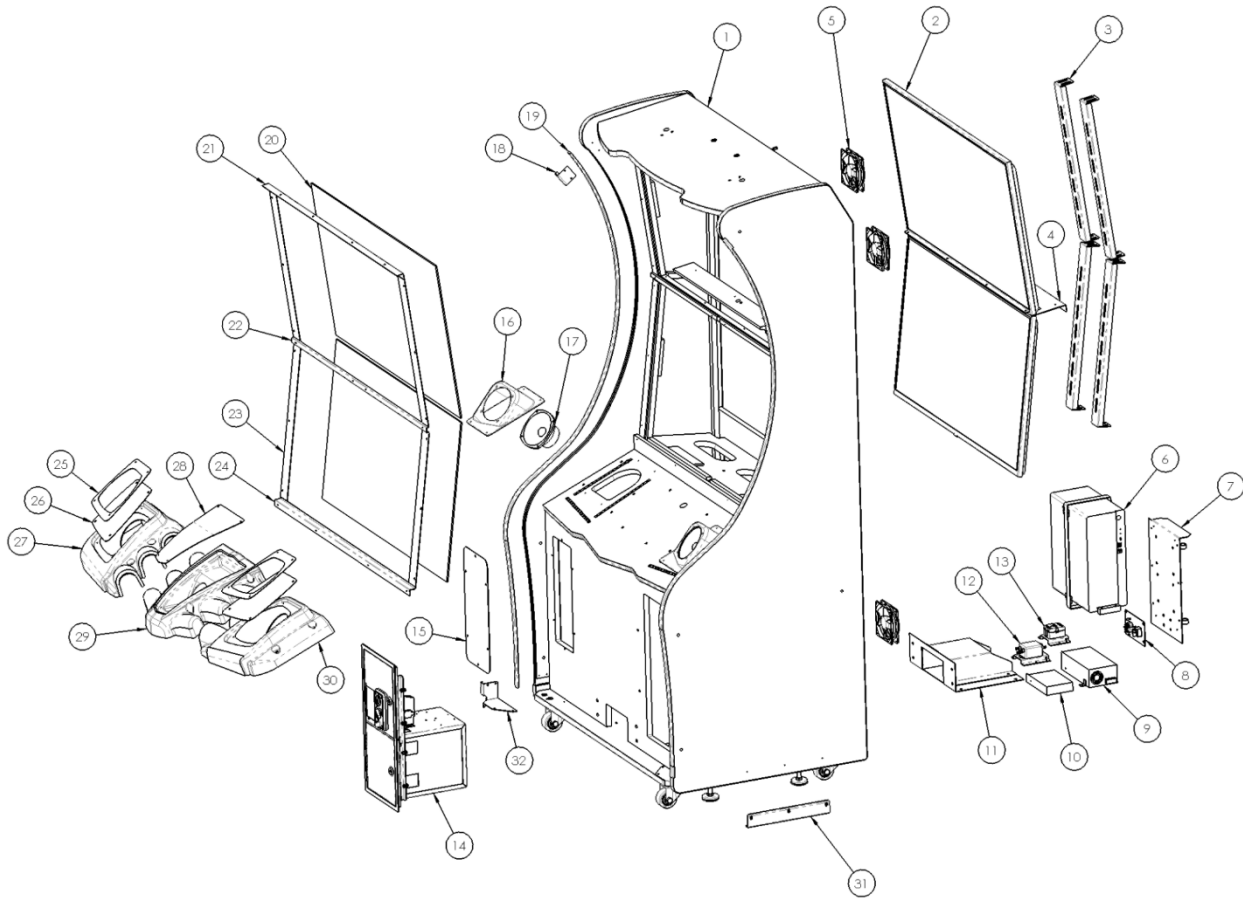
For the latest manual and information regarding this game scan the QR code or [click here \(if viewing on an electronic device\)](#)

Game Exploded Drawing



ITEM NO.	PART NUMBER	DESCRIPTION	QTY.
1	Main cabinet assembly	Main cabinet assembly	1
2	Bike assembly	Bike assembly	1
3	Upper back door assembly	Upper back door assembly	1
4	Lower back door assembly	Lower back door assembly	1

Main Cabinet Exploded Drawing w/Cabinet Art Table

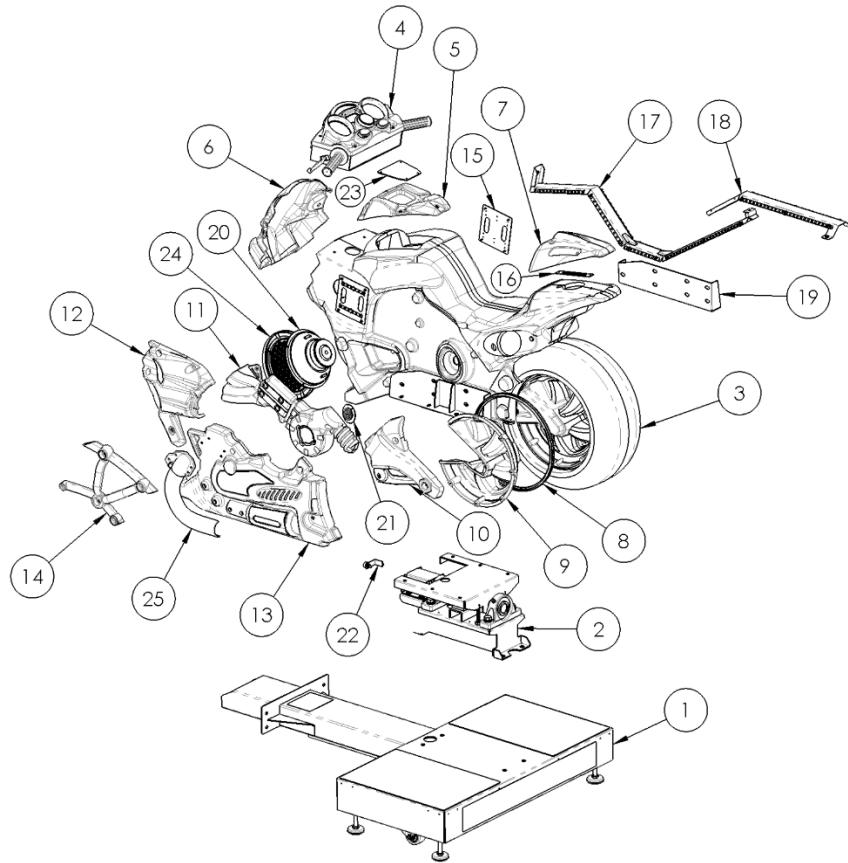


MAIN CABINET ART		
PART NUMBER	DESCRIPTION	QTY.
R90-13-200	JPR43 - Right main cabinet side decal	1
R90-13-201	JPR43 - Left main cabinet side decal	1
R90-13-202	JPR43 - Front main cabinet decal	1
R90-13-305	JPR43 - Ticket blank plate decal	1
R90-13-342	JPR43 - Top main cabinet hole cover decal	2
R90-13-304	JPR43 - Blower panel PETG	1

Main Cabinet Exploded Parts Table

ITEM NO.	PART NUMBER	DESCRIPTION	QTY.
1	R90-23-40	JPR43 - Main cabinet	1
2	R90-AP-45	43" LG monitor	2
3	600-03264-01	Monitor mounting bracket	4
4	600-03258-01	Universal monitor mount cross bracket	1
5	CA-3277	Fan assembly	3
6	PC assembly	Lenovo M70T PC (R90-AP-8) + RTX 3050 (6GB) video card (R90-19-20)	1
7	PCB plate assembly	PCB plate assembly	1
8	AC plate assembly	AC plate assembly	1
9	12V, 600W PSU assembly	PSU (330-00003-01) + additional components	1
10	5V, 110W PSU assembly	PSU (R90-8-5) + additional components	1
11	600-00500-01	Inner tunnel support bracket	1
12	AC line filter assembly	AC line filter assembly	1
13	AC relay assembly	AC relay assembly	1
14	AS-4344	Mid-width coin door assembly	1
14 alt.	AS-3973	Cashless door assembly	1
15	R1-1349	Blank ticket door plate	1
15 alt.	AS-4335	Ticket door assembly (not included)	1
16	603-00921-01	Speaker mount left side	1
16 mirror	603-00920-01	Speaker mount right side	1
17	2-1-10-00-00-000	Speaker, 5-1/4" dia., 8 ohm	2
18	R1-1326	T-mold bracket	2
19	603-00718-01	Clear LED T-molding (81")	2
20	600-03267-01	Monitor glass	2
21	R1-1189	Upper glass cross bracket	1
22	R1-1188	Middle glass cross bracket	1
23	R1-1190	Side glass bracket	4
24	R1-1187	Lower glass cross bracket	1
25	600-02395-01	Speaker frame	2
26	600-02178-01	Speaker grill	2
27	603-00870-01	Left head	1
28	R90-13-304	JPR43 - Blower panel PETG	1
29	603-00871-01-GLD	Center intake (gold)	1
30	603-00869-01	Right head	1
31	603-01002-01	Clear T-molding retainer clip	2
32	R1-1186	Lower T-Mold bracket L	1
32 mirror	R1-1185	Lower T-Mold bracket R	1

Bike Exploded Drawing w/Art Table

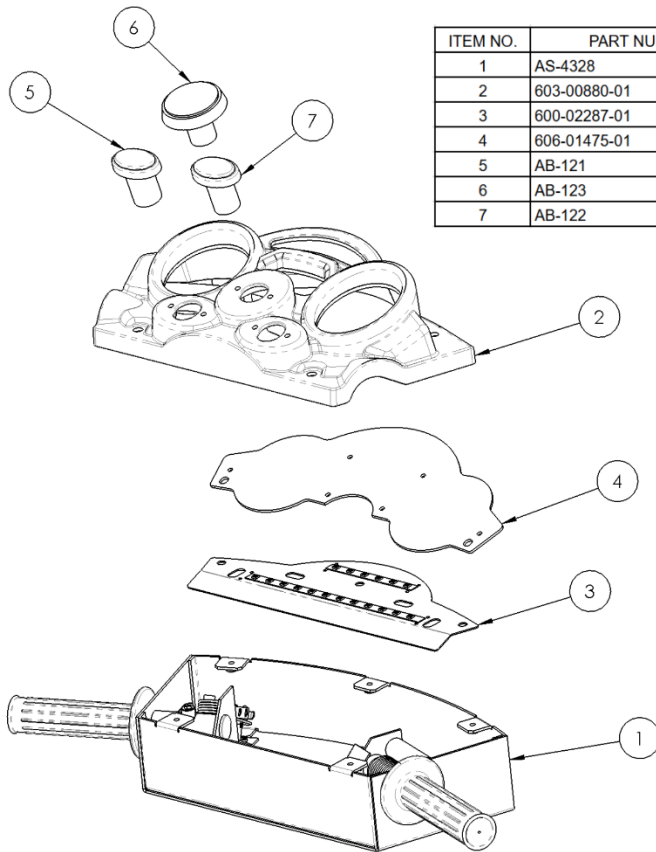


BIKE ART		
PART NUMBER	DESCRIPTION	QTY.
606-01475-01	Handlebar translight	1
606-01476-01	Raw Thrills emblem PETG - R	1
606-01477-01	Raw Thrills emblem PETG - L	1
606-01618-01	Tank PETG	1
606-01478-01	Arm decal - R	1
606-01479-01	Arm decal - L	1
R90-13-308	JPR43 - Low fairing decal - R	1
R90-13-309	JPR43 - Low fairing decal - L	1
606-01483-01	Low fairing pipe decal - R	1
606-01484-01	Low fairing pipe decal - L	1
606-01485-01	T-base connector warning decal	1
606-01486-01	Upper intake decal - R1	1
606-01487-01	Upper intake decal - R2	1
606-01488-01	Upper intake decal - L1	1
606-01489-01	Upper intake decal - L2	1
606-01490-01	Fender decal - R	1
606-01491-01	Fender decal - L	1
606-00519-01	Rear T-base warning decal	1
R90-13-306	JPR43 - Floor decal	2

Bike Exploded Parts Table

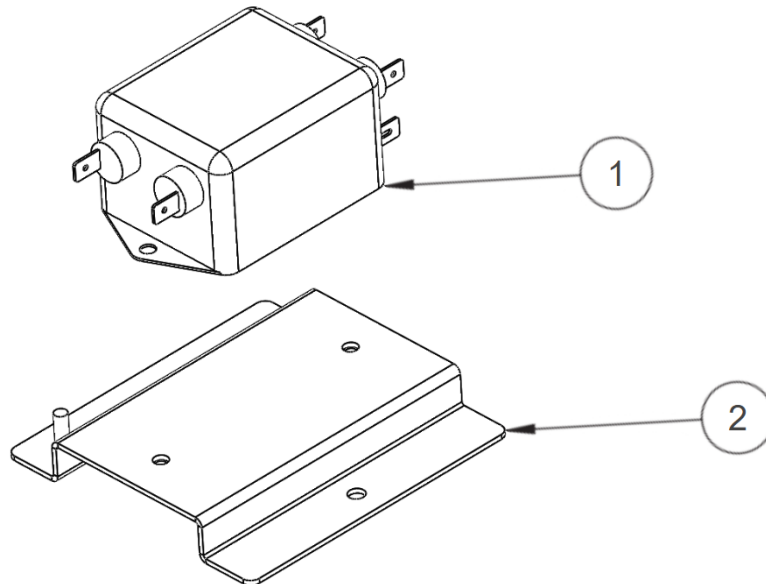
ITEM NO.	PART NUMBER	DESCRIPTION	QTY.
1	600-00512-01	Bike T-base	1
2	R90-AP-24-1	Pivot mech assembly	1
3	R90-4-73	Blue bike	1
4	Handlebar assembly	Handlebar assembly	1
5	603-00955-01	Tank shroud	1
6	603-00872-01	Front fairing	1
7	603-00879-01	Tail fender	1
8	603-00718-01	Clear LED T-molding (40")	2
9	603-00882-01-CLR	Bike L spoke cover (clear)	1
9 mirror	603-00881-01-CLR	Bike R spoke cover (clear)	1
10	603-00878-01-GLD	Bike L arm (gold)	1
10 mirror	603-00877-01-GLD	Bike R arm (gold)	1
11	603-00876-01-GLD	Bike L head (gold)	1
11 mirror	603-00875-01-GLD	Bike R head (gold)	1
12	603-00874-01	Bike L side upper vent	1
12 mirror	603-00873-01	Bike R side upper vent	1
13	603-00887-01-CLR	Bike L side lower fairing (clear)	1
13 mirror	603-00886-01-CLR	Bike R side lower fairing (clear)	1
14	603-00885-01	Bike L side frame section	1
14 mirror	603-00884-01	Bike R side frame section	1
15	600-02401-01	Vent LED plate	2
16	600-02402-01	Fender LED plate	1
17	RAP-150	Bike LED bracket upper	1
18	R1-1384	Bike LED bracket lower	1
19	RAP-154	Bike R mount bracket	1
19 mirror	RAP-153	Bike L mount bracket	1
20	2-1-18-00-00-000	Woofer, 8" dia., 4 ohm	1
21	500-00205-01	White LED superpuck	2
22	AS-4307	Pivot mech JackPot (90°) assembly	1
23	606-01618-01	Tank PETG	1
24	600-02404-01	Woofer grill	1
25	603-00889-01-GLD	Bike L side lower pipe (gold)	1
25 mirror	603-00888-01-GLD	Bike R side lower pipe (gold)	1

Handlebar Exploded Drawing w/Parts Table



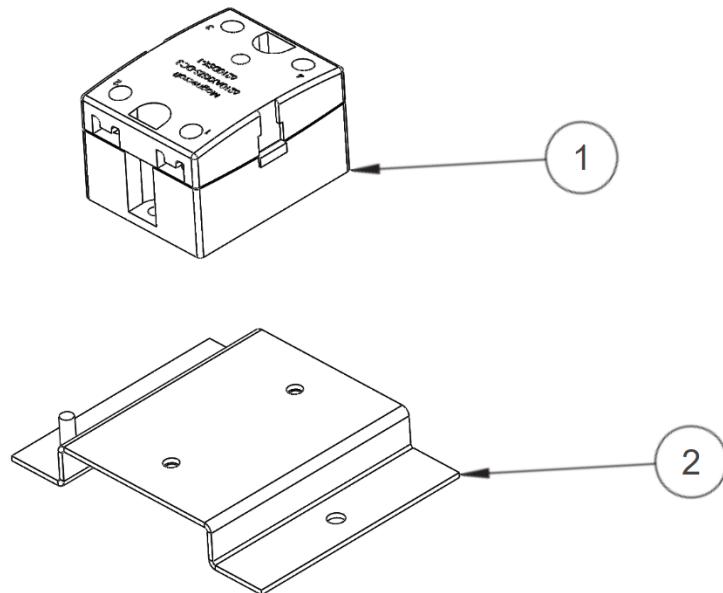
ITEM NO.	PART NUMBER	DESCRIPTION	QTY.
1	AS-4328	Handlebar mech assembly	1
2	603-00880-01	Handlebar cover	1
3	600-02287-01	Handlebar light bracket	1
4	606-01475-01	Handlebar translucent	1
5	AB-121	Tunes button	1
6	AB-123	Start button	1
7	AB-122	View button	1

Line Filter Exploded Drawing w/Parts Table



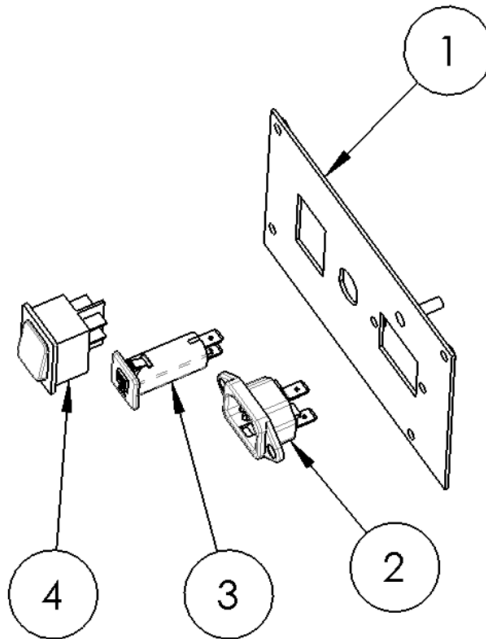
ITEM NO.	PART NUMBER	DESCRIPTION	QTY.
1	442-00001-01	AC line filter (6MV1)	1
2	600-03206-01	Line filter bracket	1

Relay Exploded Drawing w/Parts Table



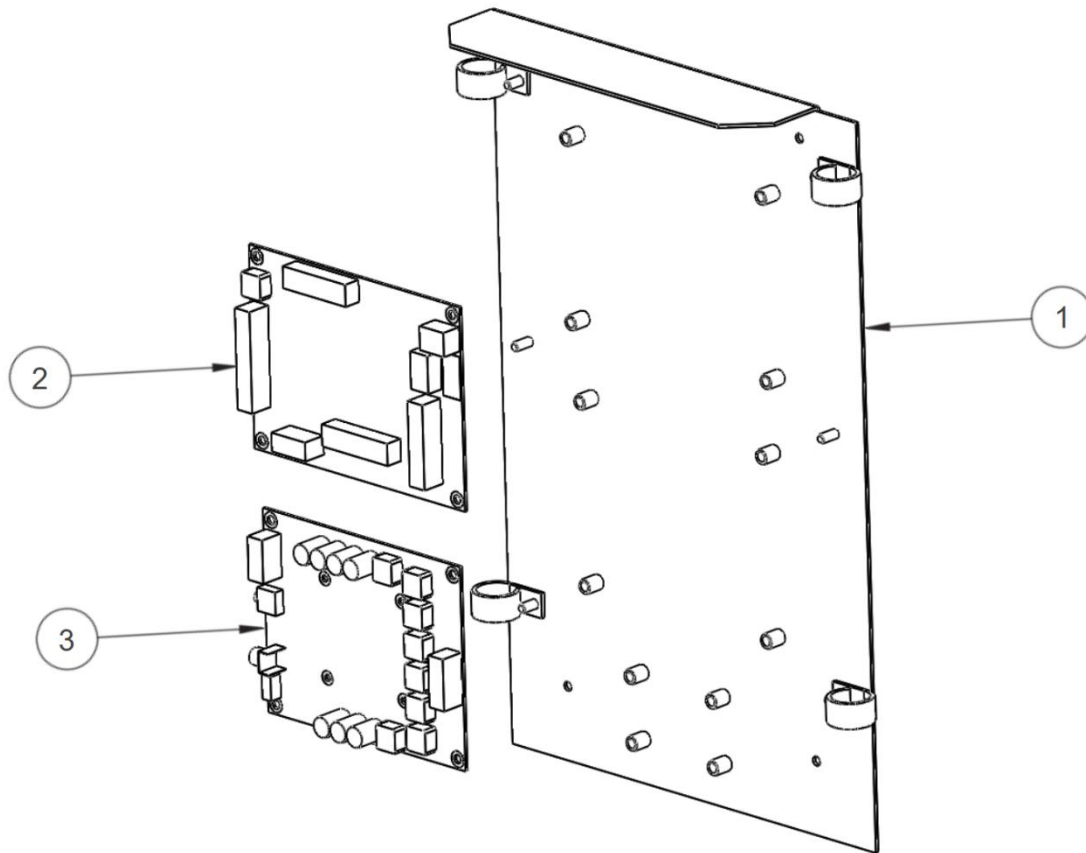
ITEM NO.	PART NUMBER	DESCRIPTION	QTY.
1	800-00079-01	25A solid state relay	1
2	600-03119-01	Solid state relay bracket	1

AC Plate Exploded Drawing w/Parts Table



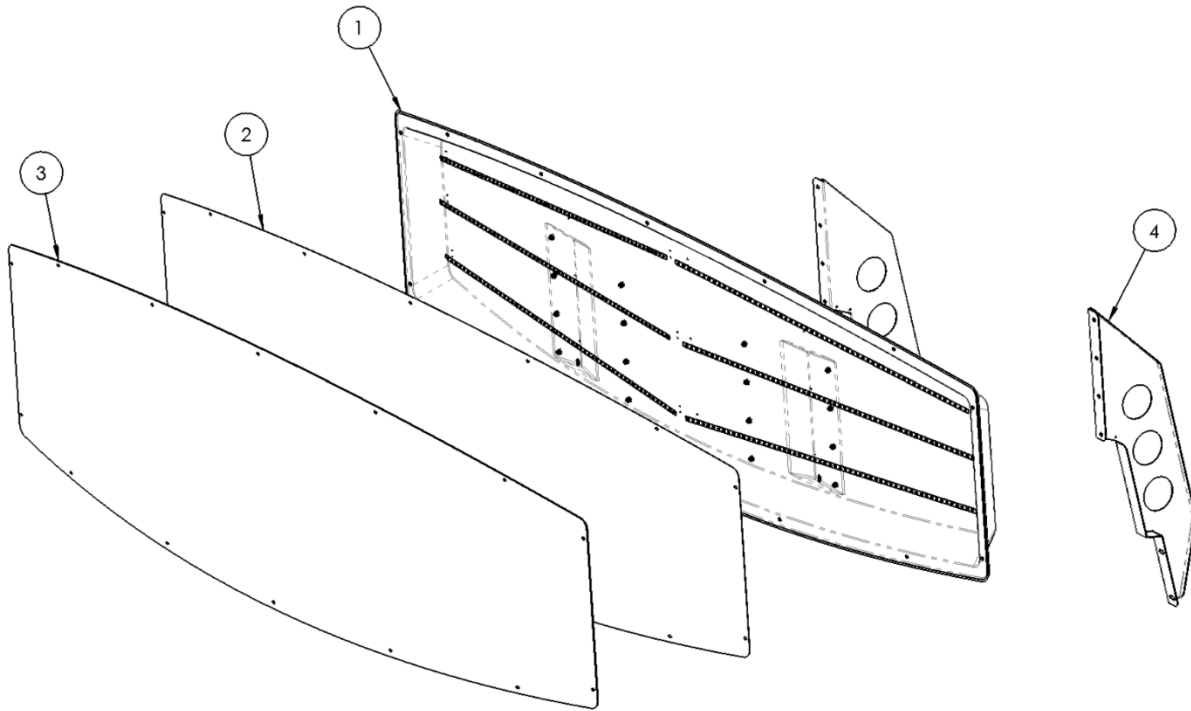
ITEM NO.	PART NUMBER	DESCRIPTION	QTY.
1	600-01681-01	AC inlet plate	1
2	Qualtek - 703W-00/08	15A, 250VAC receptacle	1
3	Schurter - 4404.0002	6A, 240VAC circuit breaker	1
4	Marquardt - 1832.3312	16A, 250VAC DPST rocker switch	1

PCB Plate Exploded Drawing w/Parts Table



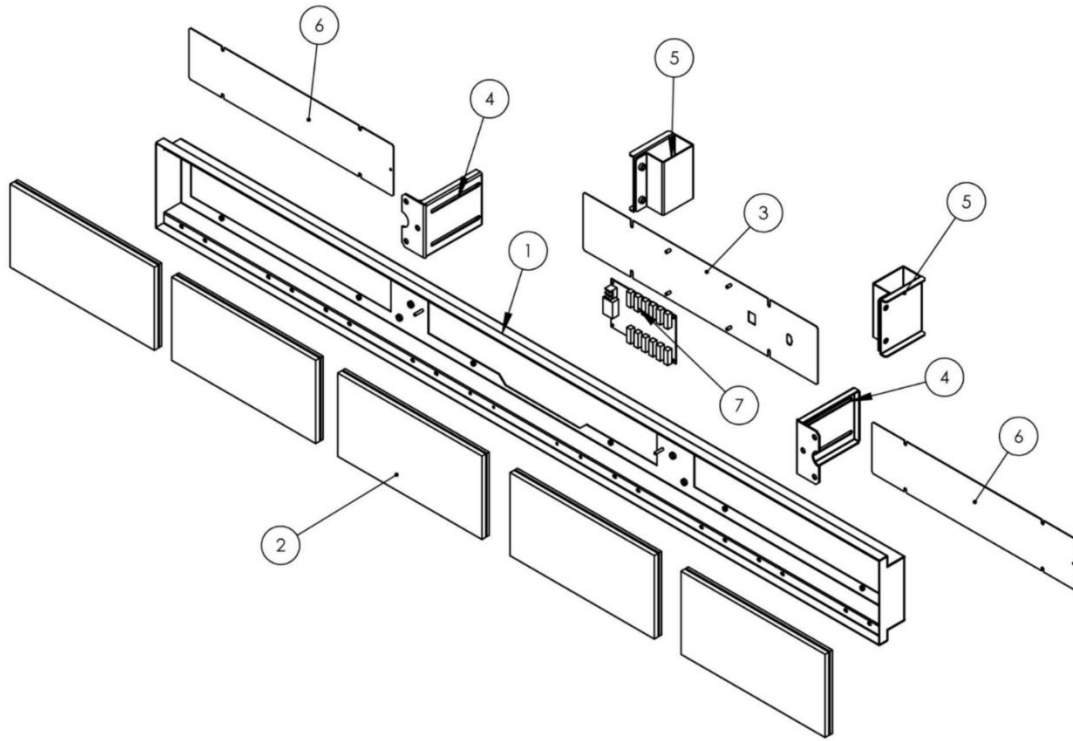
ITEM NO.	PART NUMBER	DESCRIPTION	QTY.
1	600-02049-01	RIO2 mounting bracket	1
2	500-00199-05	RIO2 PCB	1
3	500-00212-03	RIO2 audio amp PCB	1

Double Wide Marquee Exploded Drawing w/Parts Table



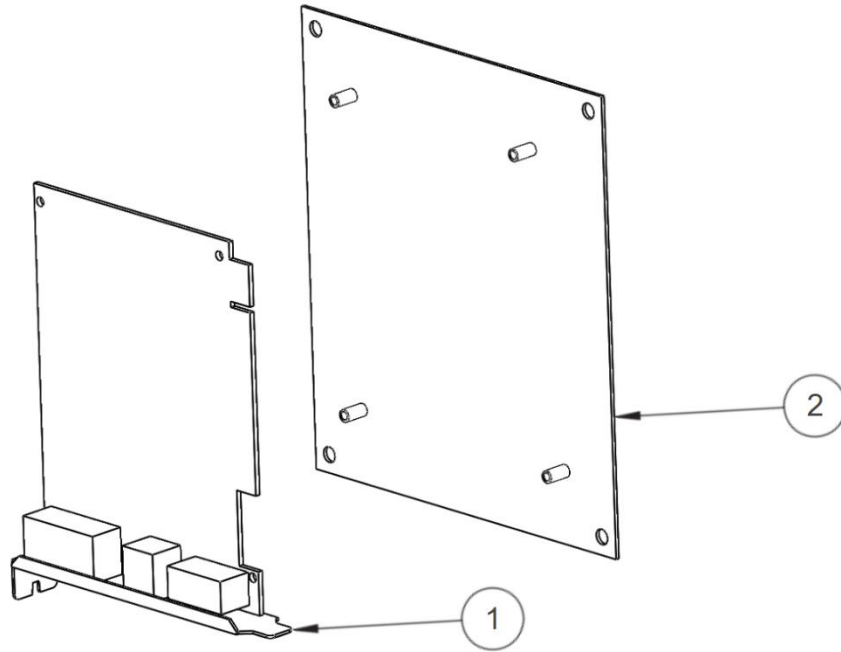
ITEM NO.	PART NUMBER	DESCRIPTION	QTY.
1	603-01066-01	Double wide marquee pan	1
2	R90-13-203	JPR43 - Double wide translucent	1
3	600-02929-01	Double wide marquee PETG overlay	1
4	R1-1192	Double wide marquee bracket R	1
4 mirror	R1-1193	Double wide marquee bracket L	1

LED Ribbon Exploded Drawing w/Parts Table



ITEM NO.	PART NUMBER	DESCRIPTION	QTY.
1	R1-1120	LED module housing bracket	1
2	R90-AP-10-BGR	P2 LED module (320 x 160 mm)	5
3	R1-1142	Module housing back plate, center	1
4	600-01020-01-BLK	LED screen assembly mounting bracket (black)	2
5	600-00770-01	LED screen assembly clamping bracket	2
6	R1-1121	Module housing back plate, side	2
7	380-00001-01	LED receiver card	1

LED Sender Card Exploded Drawing w/Parts Table



ITEM NO.	PART NUMBER	DESCRIPTION	QTY.
1	380-00002-01	LED sender card	1
2	R1-1138	LED sender card bracket	1

Electrical Diagrams

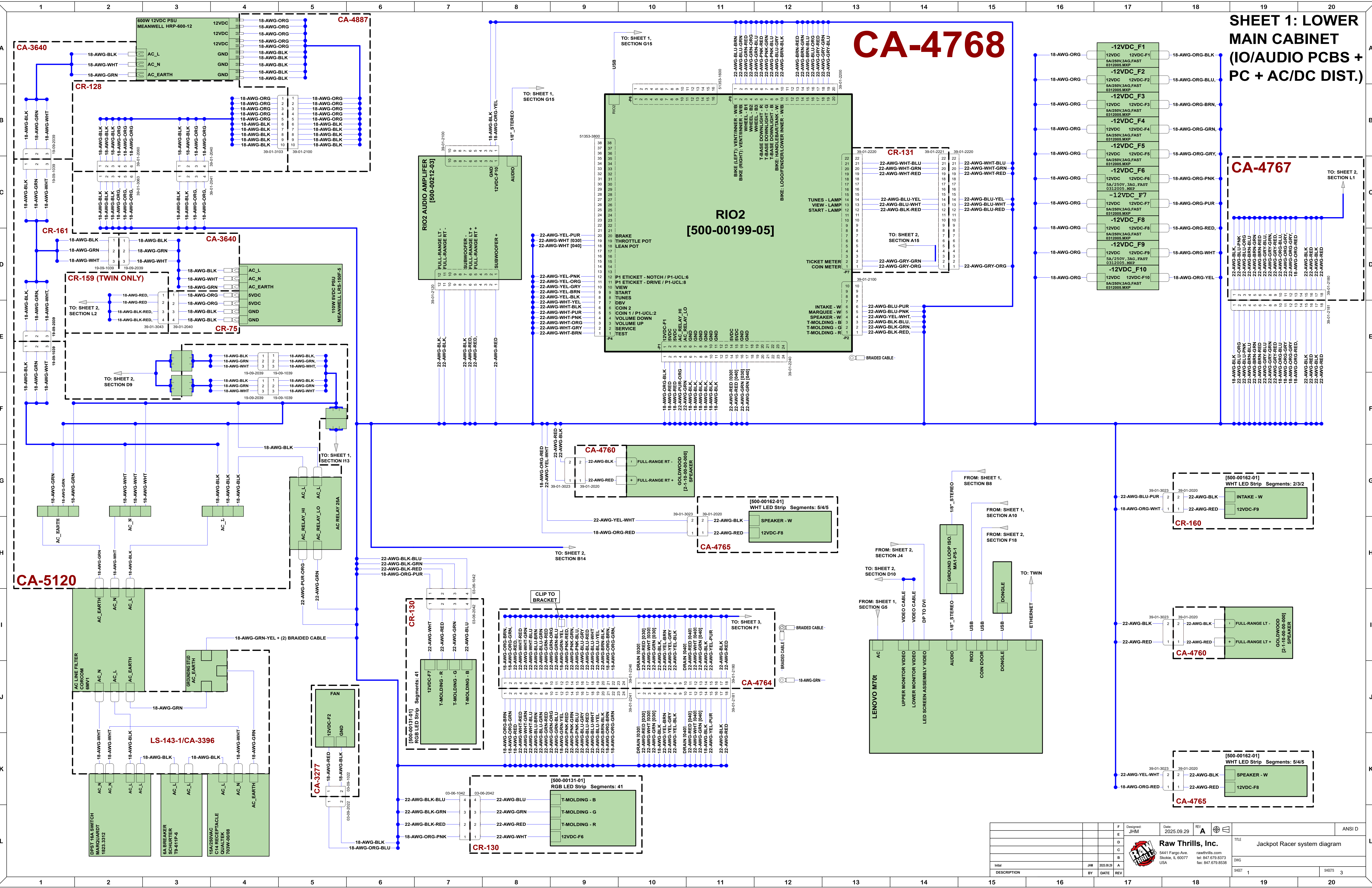
Pg. 58 – Lower Main Cabinet (IO/Audio PCBS + PC + AC/DC Dist.)

Pg. 59 – Upper Main Cabinet + Toppers + Vault/Ticket Disp.

Pg. 60 – Bike

SHEET 1: LOWER MAIN CABINET (IO/AUDIO PCBs + PC + AC/DC DIST.)

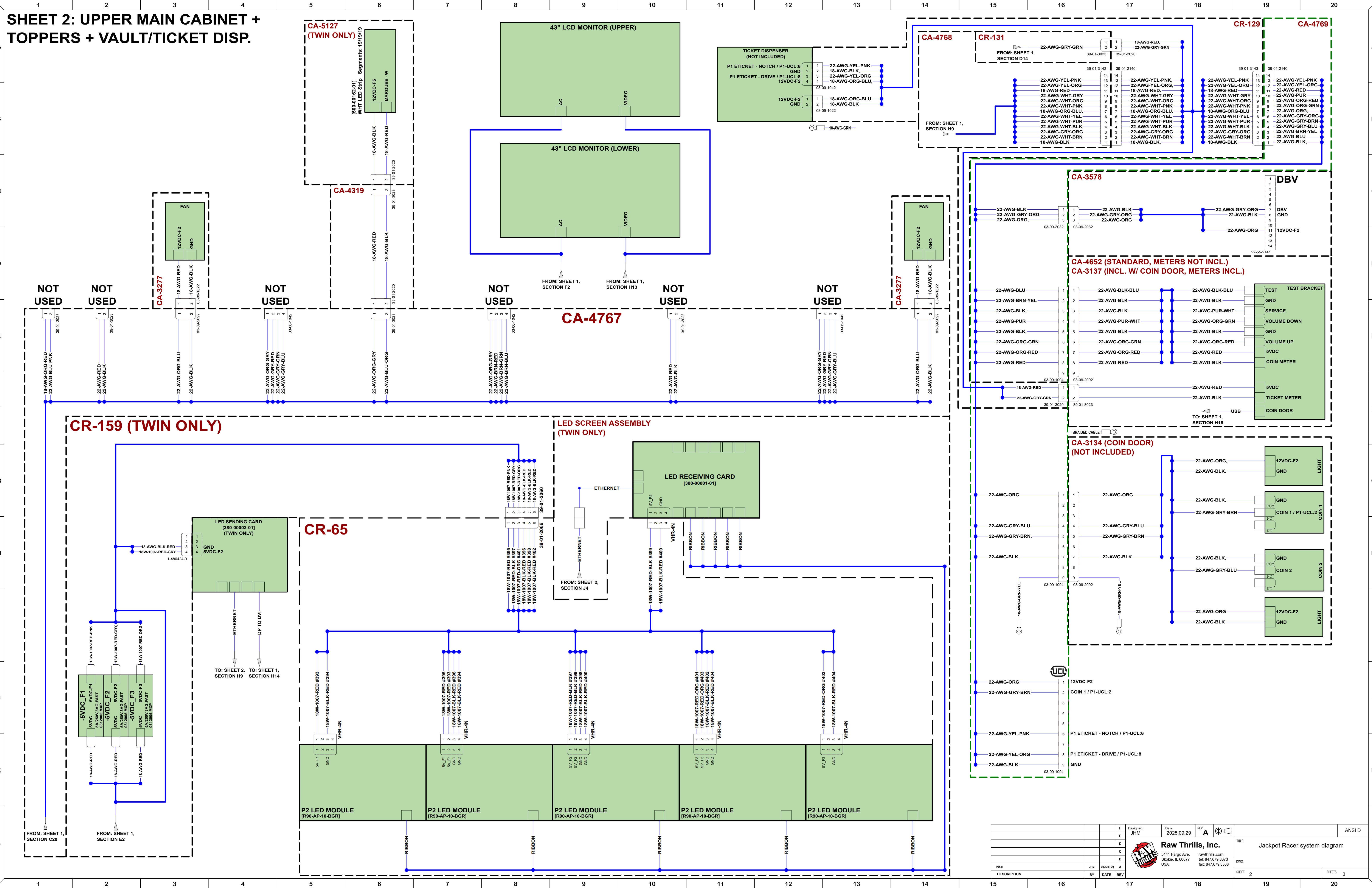
CA-4768



DESIGNER	JHM	DATE	2025.09.29	REV	A	TITLE	Jackpot Racer system diagram
BY	JHM	DATE	2025.09.29	REV	A	ANSI D	
DESCRIPTION						DWG	
						SHEET	1
						SHEETS	3



SHEET 2: UPPER MAIN CABINET + TOPPERS + VAULT/TICKET DISP.



DESIGNER	JHM	DATE	2025.09.29	REV	A	ANSI D	
DATE	2025.09.29	REV	A	TITLE		Jackpot Racer system diagram	
DESCRIPTION	BY		JHM	DATE		2025.09.29	
Initial		JHM		DATE		2025.09.29	
DESCRIPTION		BY		DATE		2025.09.29	
SHEET		2		SHEETS		3	



