

Triotech

Storm-AM-001

Assembly Manual

Rev. 1.3

Original Instructions



© Triotech Inc., 2020. All Rights Reserved.
Triotech Inc.
www.trio-tech.com

Original Instructions

Table of Content

1	Introduction	4
1.1	Document Conventions.....	5
1.2	Definitions and Acronyms.....	5
1.3	Disclaimers	6
2	Required tools.....	6
3	Reception	7
4	Build-up	10
4.1	Back Pillar Assembly	10
5	Connections	17
5.1	Top of the tower.....	18
5.1.1	Television connections.....	18
5.1.2	Left Pillar	19
5.1.3	Right Pillar	19
5.2	Rear Cabinet	20
5.3	Seat	24
5.4	Closing the towers.....	26
5.5	Installing the protective nets	27
6	Money Acceptor Installation.....	28
6.1	Card Swiper	28
7	120/240 Power and fuses	29
8	TrioTech Service and Support Team Contact	31

List of Tables

Table 1	Symbols Convention	5
Table 2	Definitions	5
Table 3	Acronyms.....	5



1 Introduction

This manual will provide you with the necessary instructions on how to assemble your Storm attraction.

IMPORTANT: SAVE THESE INSTRUCTIONS.

Copyright law and industrial property law protect the contents of the Storm, its components, its software and its design.

The Storm will be delivered to your location and will include all necessary parts and components to easily install it.

In case of difficulty, please do not hesitate to contact Triotech's Service and Support Team.

Triotech Amusement Inc.
780 rue Marion
Joliette, Québec
Canada
J6E 8S2

Phone: +1 (450) 760-9082 (Press 1 for Service and Support)
Toll Free (US/CAN): 1-888 465-4634
Fax: +1 (450) 760-9348
service@trio-tech.com
24-hour technical support

1.1 Document Conventions

This document utilizes symbols to draw the reader's attention to critical sections:





Symbol	Meaning
	NOTE: A NOTE provides emphasis or supplementary explanation.
	CAUTION: Equipment damage can result if a CAUTION is not followed.
	WARNING: Personal injury or death can result if a WARNING is not followed.
	ELECTRICAL HAZARD: The Electrical Hazard WARNING specifies the type of Hazard.

Table 1 Symbols Convention

1.2 Definitions and Acronyms

Term	Definition
Clerk	Ride operator who controls the load/unload of the ride.
Guest	A Guest is a person who is visiting the facilities of the Operator. A Guest is a potential Rider of the Storm.
Media system	Covers the visual and audio systems, the special effects, as well as the computer complex to control them.
Operator	Any person or company that operates a system or product to provide services.
Queue Area	Represents the zone where guests are waiting before entering the Storm
Rider	Person enjoying the Ride. A Rider is a Guest of the Operator.

Table 2 Definitions

Acronym	Definition
HMI	Human Machine Interface
IR	Infrared
SFX	Special Effects

Table 3 Acronyms



1.3 Disclaimers



Any modifications made to the Storm system that are not authorized in writing by the manufacturer will be considered to be the exclusive responsibility of the customer, who will consequently become the new “manufacturer” and will have to operate in compliance with the rules and regulations applicable.



Triotech Amusement Inc. bears no responsibility for accidents, injury or damage resulting from unauthorized changes or improper use of the product, including improper application of the safety rules.



The components used in this Storm has been approved following quality control tests at various stages of production.

2 Required tools

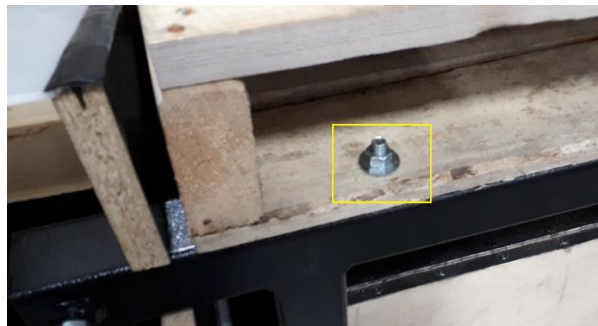
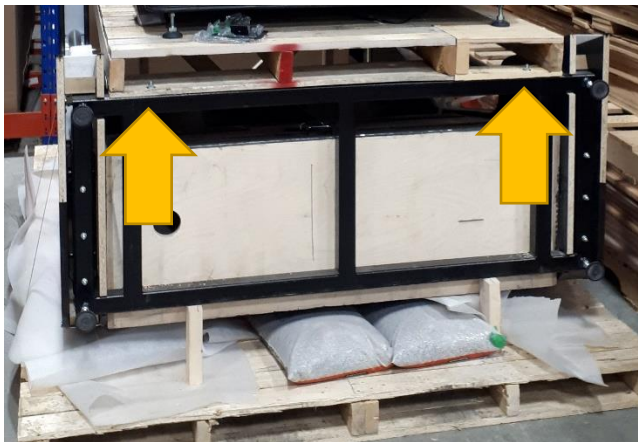
- 2.5 mm Allen Key
- Ratchet
- 10 mm Socket
- 10 mm Wrench
- Torque Wrench
- 17 mm Socket
- 17 mm Wrench
- 19 mm Socket
- 19 mm Wrench

3 Reception

Upon receiving the Storm, before unstacking the pallet, remove the bolts and screws securing the shipment.



Remove the bolts on both sides of the pallet at the base of the tower.






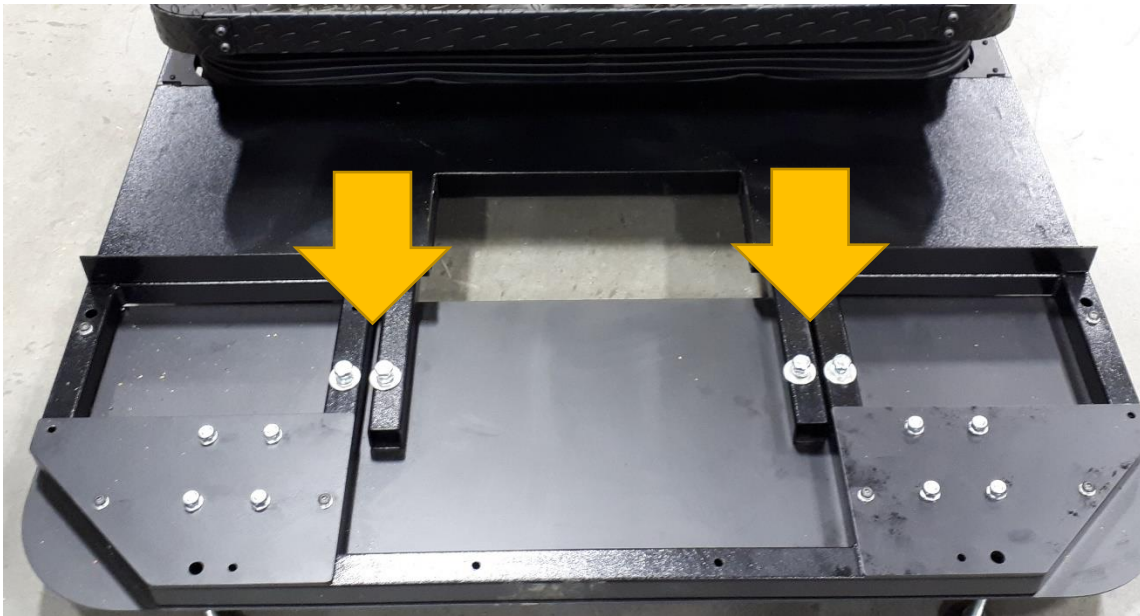
Remove the screws holding the top and bottom pallets together



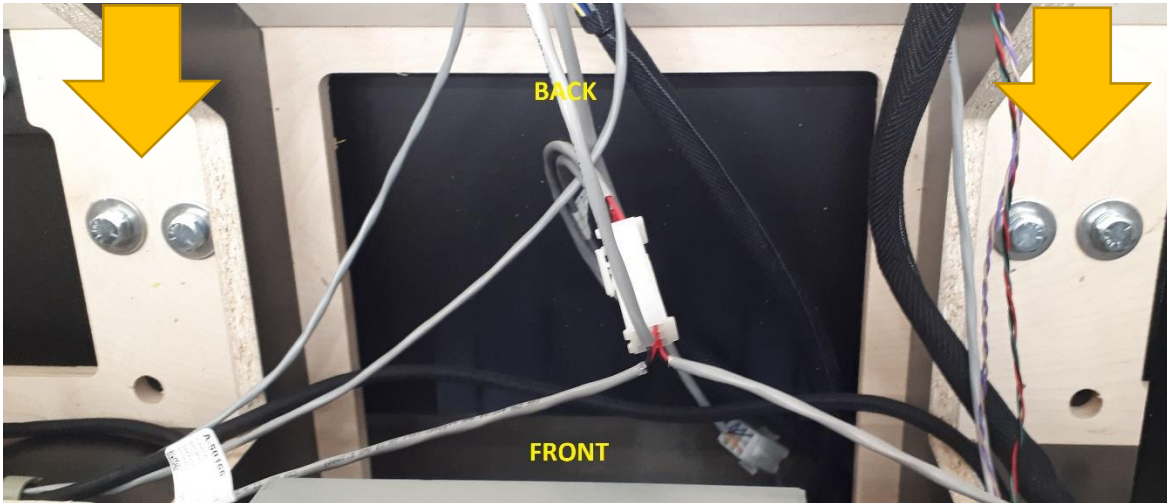
Depending on the shipping method, the front cabinet may need to be installed on the seat structure.

	It is recommended to proceed with a minimum of 3 persons and/or a chain block.
---	--

1- Remove the 4 Hex Screw 1/2-13 from the seat structure.



- 2- Install the front cabinet.
- 3- Insert the 4 Hex Screw ½-13 initially removed, once snug tight, perform an additional half turn and/or until the washer imprints lightly in the wood.



- 4- Install the fan covers.



The installation can begin.



4 Build-up

4.1 Back Pillar Assembly

- 1- Start by inserting the ½" Swivel caster with brake (100-1372) at the back of the tower and the ½" Low Profile (100-5707) at the front of the tower, using a wrench.



- 2- Lock the rear swivels and raise the tower in the upright position. It is recommended to proceed with a minimum of 3 persons and/or a chain block.



Please note that the following procedure involve lifting a weight that can tip.






3- Install the Television rack on the upper part of the tower. Use the following to secure it in place.

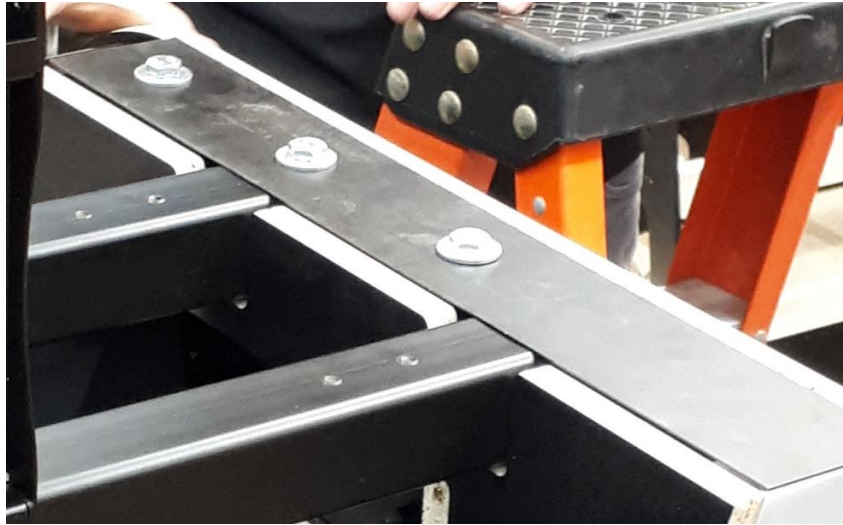
- 100-5222 HEX SCREW M10 x 1.5 x 100-26 ZINC
- 100-0607 FLAT WASHER M10 X 10.5mm X 30mm
- 100-5019 NYLON LOCK NUT M10 x 1.5

It is recommended to proceed with a minimum of 3 persons and/or a chain block.

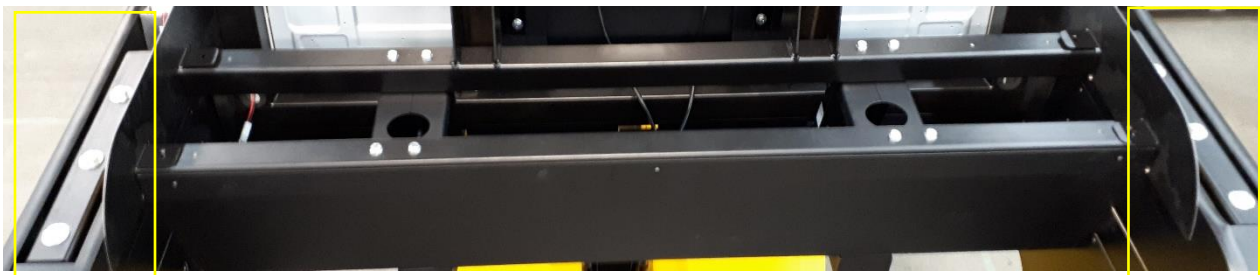
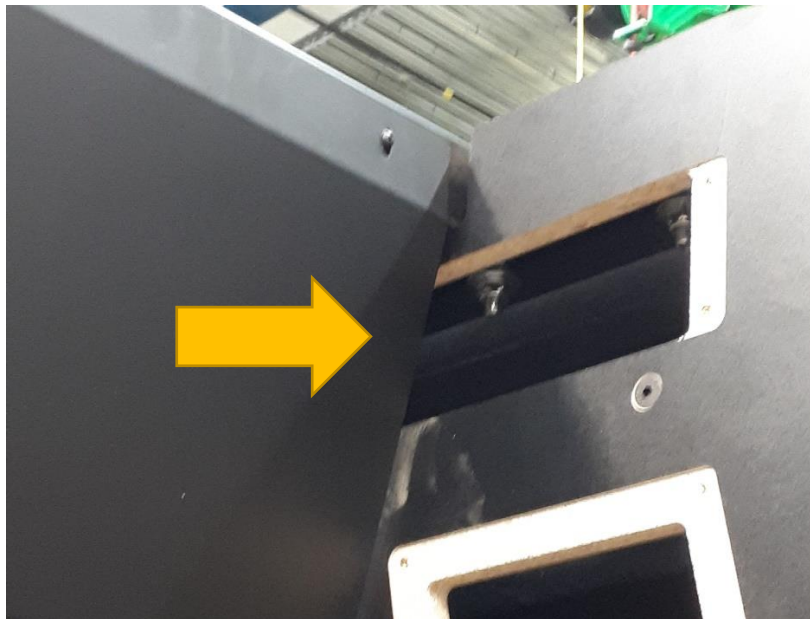
 Please note that the following procedure involve lifting a weight of 75 lbs.



Before inserting the M10 Hex screws, place the top cover (P-03269) and align it with the screw holes.



Using the openings on the inner sides of the pillars, screw the Hex screws in place. 3 per sides. M10 HEX SCREWS MUST BE TORQUED TO 27.9 lb-ft

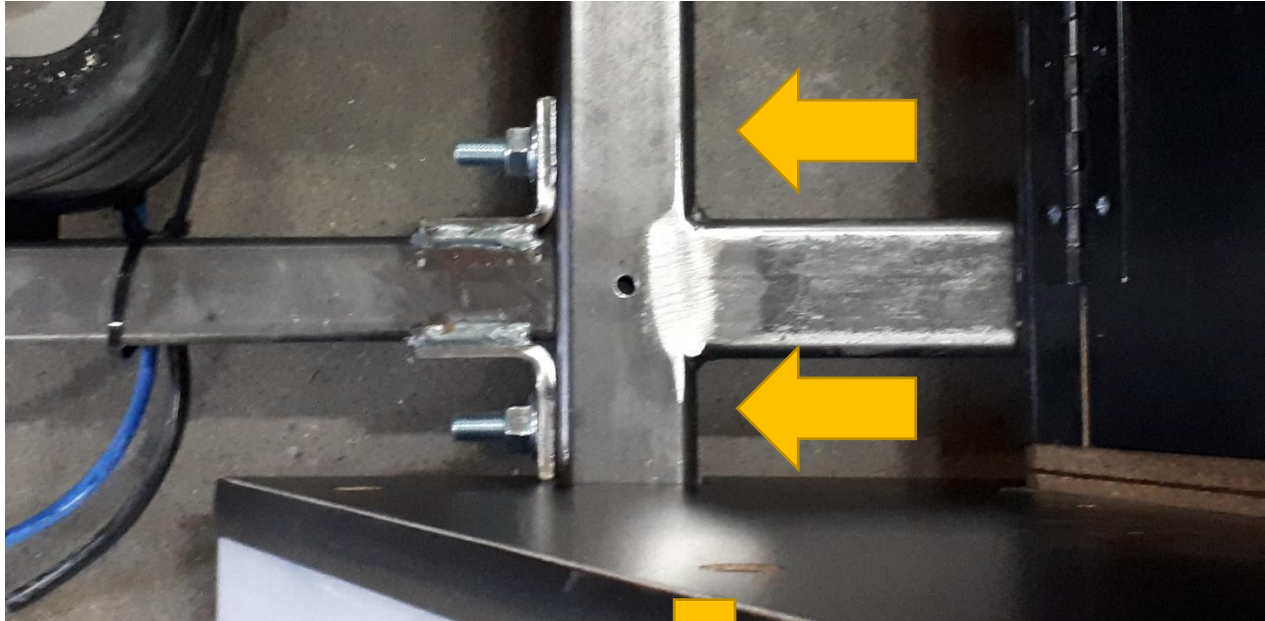




4- Bolt the tower and the front assembly together on both sides of the Storm. Use the following to secure it in place;

- 100-0997-NSL HEX SCREW M12 X 1.75 X 40mm BLACK SL
- 100-5457 FLANGED HEX NUT M12 x 1.75
- 100-5013 FLAT WASHER M12 ZINC

M12 HEX SCREWS MUST BE TORQUED TO 48.7 lb-ft



5- Proceed to mount the television on the television rack.

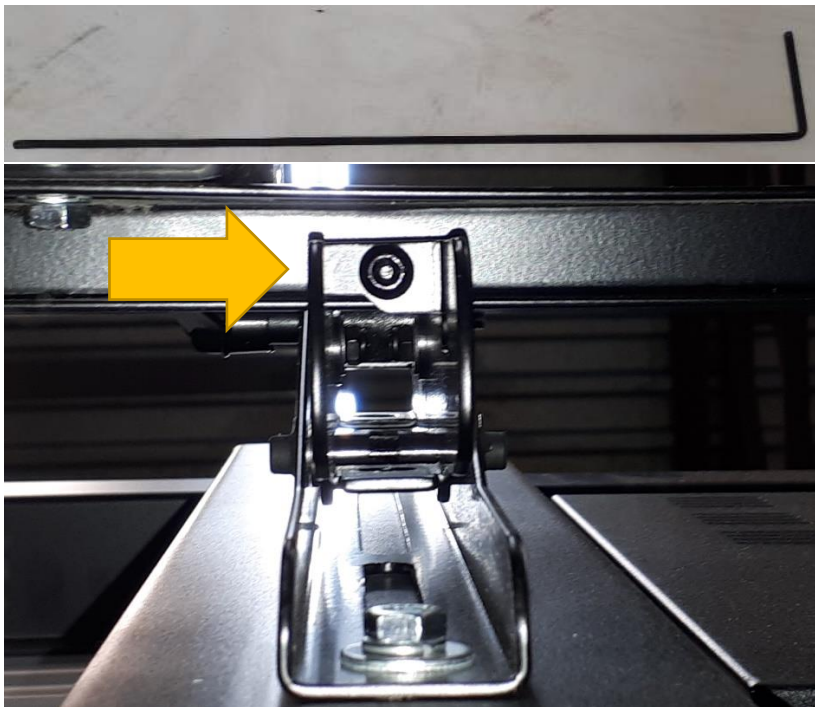


Please note that the following procedure involve lifting a weight of 80lbs.

It is recommended to proceed with a minimum of 3 persons and/or a chain block.

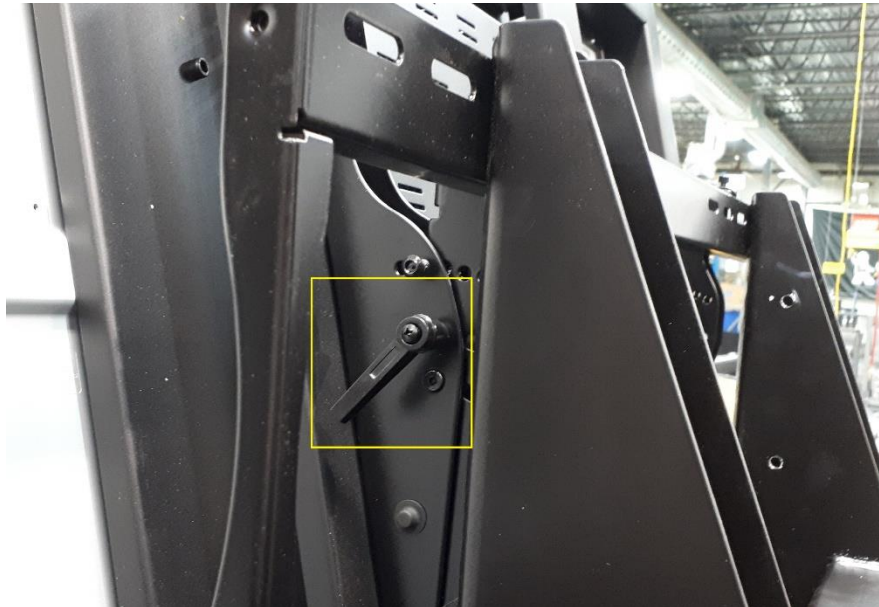


6- Using the long Allen key, tighten the 2 bottom screws on the television rack.





- 7- Loosen the clamps on the side of the television rack to position the television with the right angle. When the television is positioned correctly, tighten the clamps.



- 8- Install the Television side panels (P-03229 and P-03228) using the 2.5 mm Allen key.



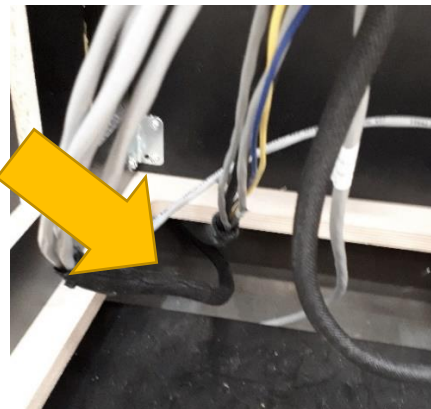
5 Connections

The harness from the front cabinet will need to be passed under the Storm. The harness can be recognized as it will be wrapped on itself. NOTE: The calibration plate is stored in the front cabinet for shipping, remove it and keep it in a safe place.

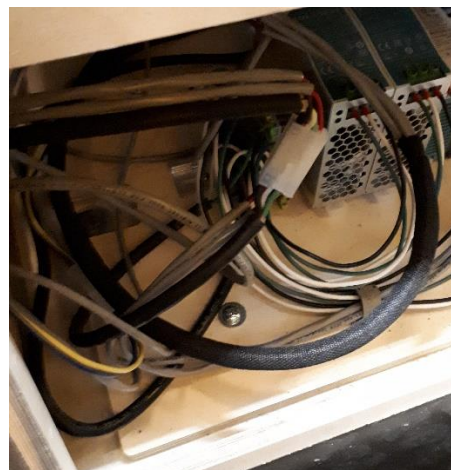
To do so, remove the screws around the front Storm plastic plate.



The harness can be passed through an opening at the bottom of the front cabinet.



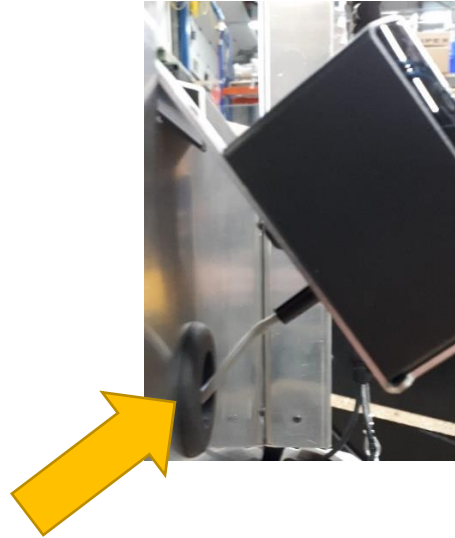
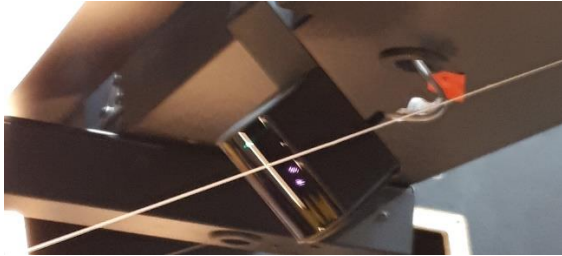
Carefully pull it all the way through and into the back cabinet.





5.1 Top of the tower

Connect the Base Station

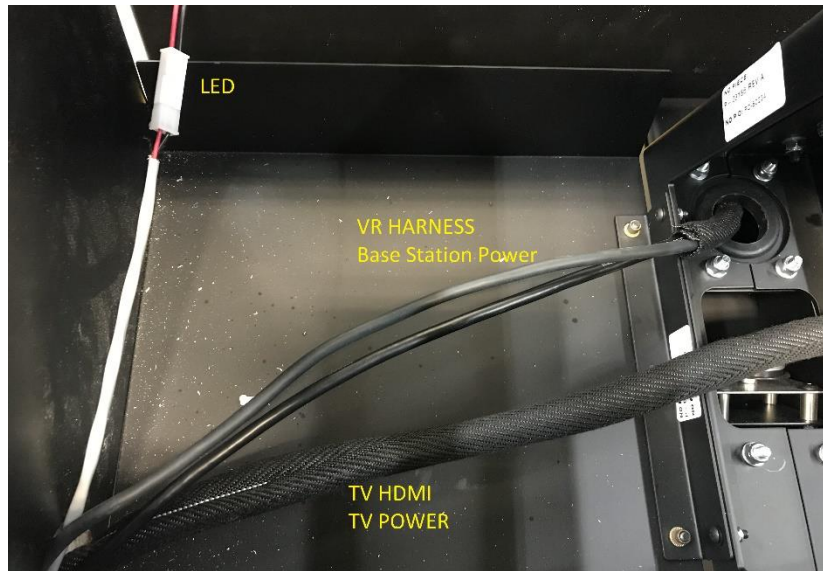


5.1.1 Television connections

Connect the TV Power and HDMI



5.1.2 Left Pillar



5.1.3 Right Pillar





5.2 Rear Cabinet

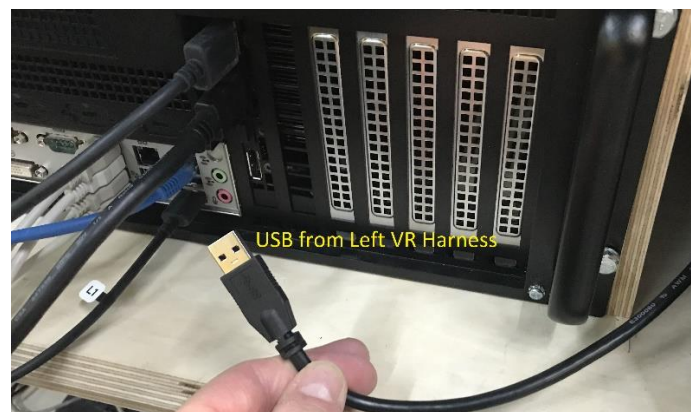
USB from right VR Harness to Client computer.



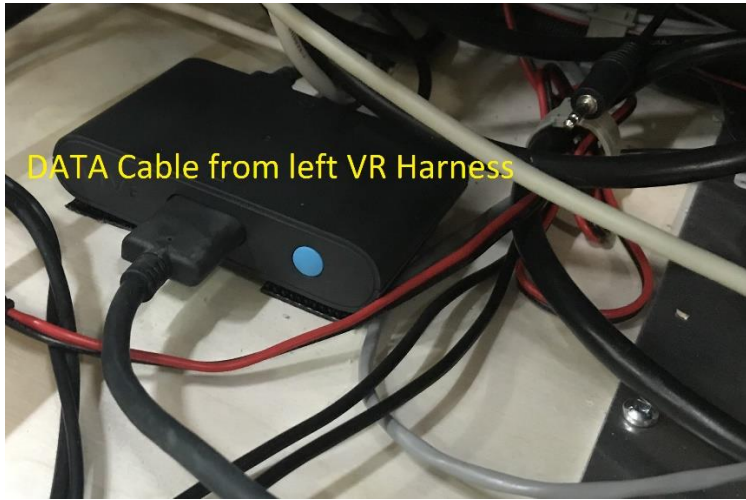
DATA cable from right VR Harness to right Link Box.



USB from left VR Harness to Server computer.



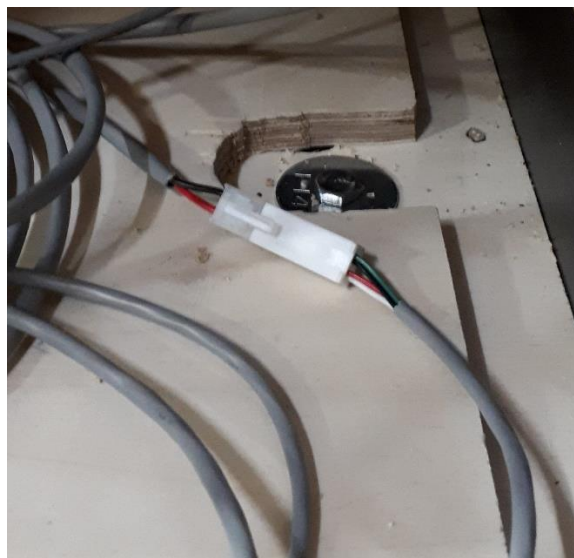
DATA Cable from left VR Harness to left Link Box



HDMI from Television going to KVM



LED Right tower 2-pin connector – bottom shelf

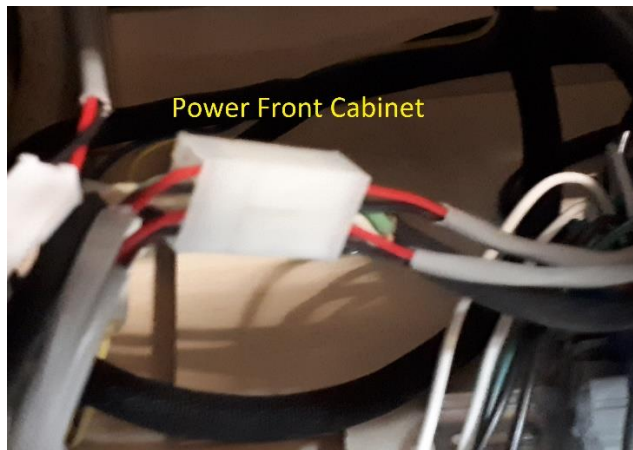




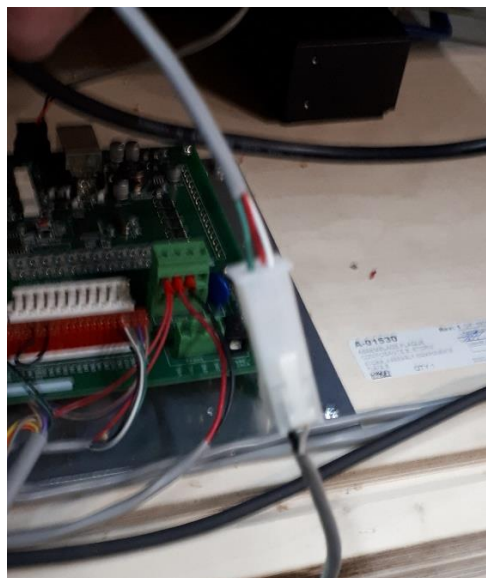
LED Left tower 2-pin connector – bottom shelf



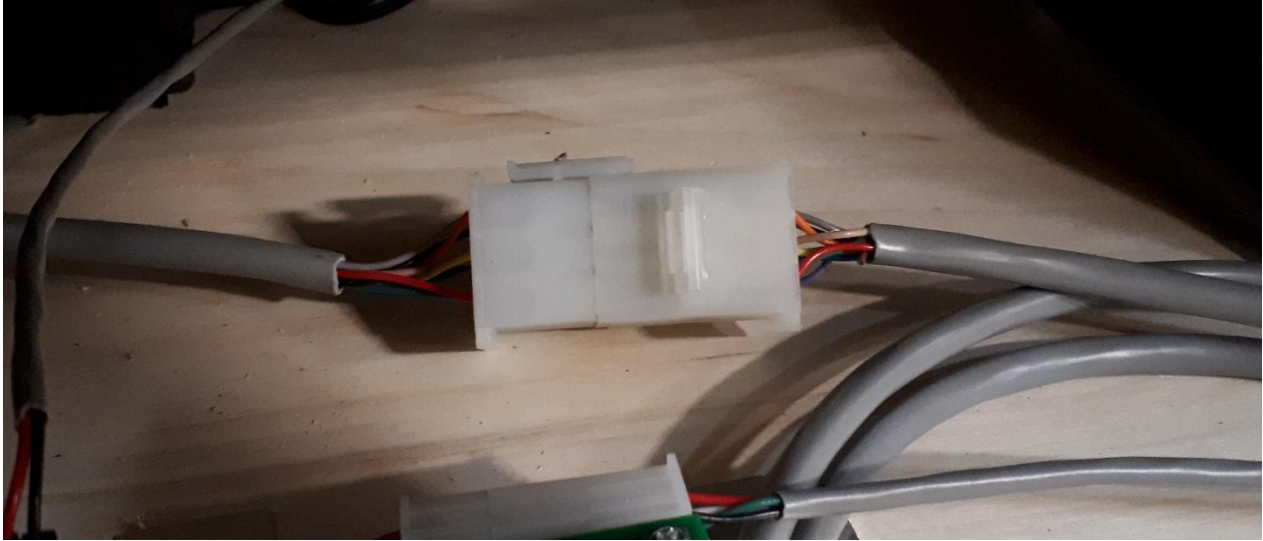
Front Cabinet Power 8-pin connector



E-Stop 2 pin-connector



Coin Door





5.3 Seat

Network and Power from the Seats to the back cabinet.



Seat motion network cable to KCU.



Seat Network pathway



Seat Power





5.4 Closing the towers

When all the connections are done, install the covers on the inside of the towers.

Top cover: P-3008

Middle cover: Left: P-03224 Right:P-03223

Bottom cover: P-03225



5.5 Installing the protective nets

Install the protective nets on both sides of the Storm using the hooks on the seat and rear cabinet.





6 Money Acceptor Installation

6.1 Card Swiper

Locate the terminal block in the front cabinet.

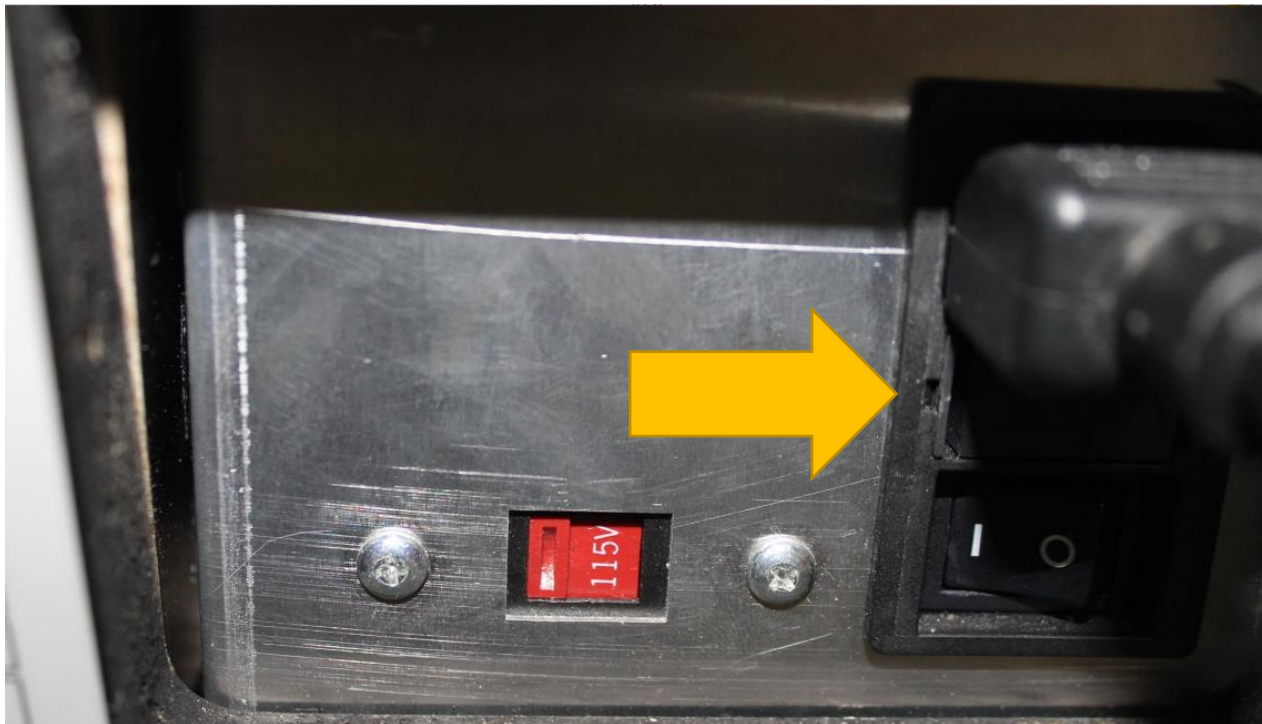
- Connect 12V at the end rectangle position.
- Connect signal at the green rectangle position.
- For either 1 card or 2 card swiper configuration, connect both signal at the same location.
- Set the credit value in the card swiper system.
- Set machine credit value to 1 for each player.

7 120/240 Power and fuses

The Storm can be used on either 120V or 240V, however the correct fuse needs to be in place.

- 120V requires the 10Amp fuse.
- 240V requires the 6.3Amp fuse.

The fuse is located in between the power connection and I/O switch.





Refer to the Owner's Manual to run the calibration procedures.

8 TrioTech Service and Support Team Contact

Triotech Amusement Inc.
780 rue Marion
Joliette, Québec
Canada
J6E 8S2

Phone: +1 (450) 760-9082 (Press 1 for Service and Support)
Toll Free (US/CAN): 1-888 465-4634
Fax: +1 (450) 760-9348
service@trio-tech.com
24-hour technical support

