



SpongeBob SquarePants

VR BOBBLE COASTER

ASSEMBLING GUIDE



FIRST STEPS

	4
Step 1 – Unpacking your Coaster	4
Step 2 – Removing the support pipes	5
Step 3 – Removing the BLACK-DISPLAY	6
Step 4 - Installing the support pipes	7
Step 5 – Installing the back-display on the simulator base	8
Step 5.1 – Adjusting the Pipes Position	9
Step 6 – Opening the back-display door and seat	10
Step 7 – Inserting the cable through the internal back-display pipe	11
Step 8 – Tools required to attach the wind system cable to the LED cables	12
Step 9 – Tying up the LED cables to the sound system cable	13
Step 10 – Cutting the zip tie	14
Step 11 – Connecting the LED cables to the power	15
Step 12 – Inserting the cable through the internal back-display pipe	16
Step 13 – Pulling the wind system cable to the base connector	17
Step 14 – Connecting the wind system cable	18
Step 15 – Connecting the payment system cable	19
Step 16 – Inserting the power cable through the internal back-display pipe	20
Step 17 – Connecting the power cable to the power outlet	21
Step 18 – Connecting the sound cable to the base	22
Step 19 – Closing the seat	23



Step 20 – Closing the latches	24
Step 21 – Locking the latches	25
VR HEADSET INSTALLATION	26
Step 1 – Installing the headsets	26
Step 2 – Inserting the headset cable through the Back-display	27
Step 3 – Grabbing the headset cable from inside the Back-display	28
Step 4 – Attaching the headset to the Back-display	29
Step 5 – Connecting the USB cable to the computer	30
Step 6 – Turning the Headset on	31
Step 7 – Turning the simulator ON (internal button)	32
Step 8 – Closing the back-display door	33
CONNECTING THE RILIX COASTER TO THE INTERNET	34
Step 1	34
Step 2	35
Step 3	36
Step 4	37
Step 5	38
Step 6	39
ADJUSTING THE VOLUME	40
CONTACT INFO	41



FIRST STEPS

STEP 1 – UNPACKING YOUR COASTER

Remove the straps and unwrap the Rilix Coaster. Be careful when using sharp tools so as not to damage the surface of the product.



STEP 2 – REMOVING THE SUPPORT PIPES

The Back-display of the simulator is shipped disassembled, between the seat and the simulator hood. To remove the Back-display without damaging it, remove the support pipes (**pictures 1 and 2**) that are fitted to the rear of the simulator before removing the Back-display.

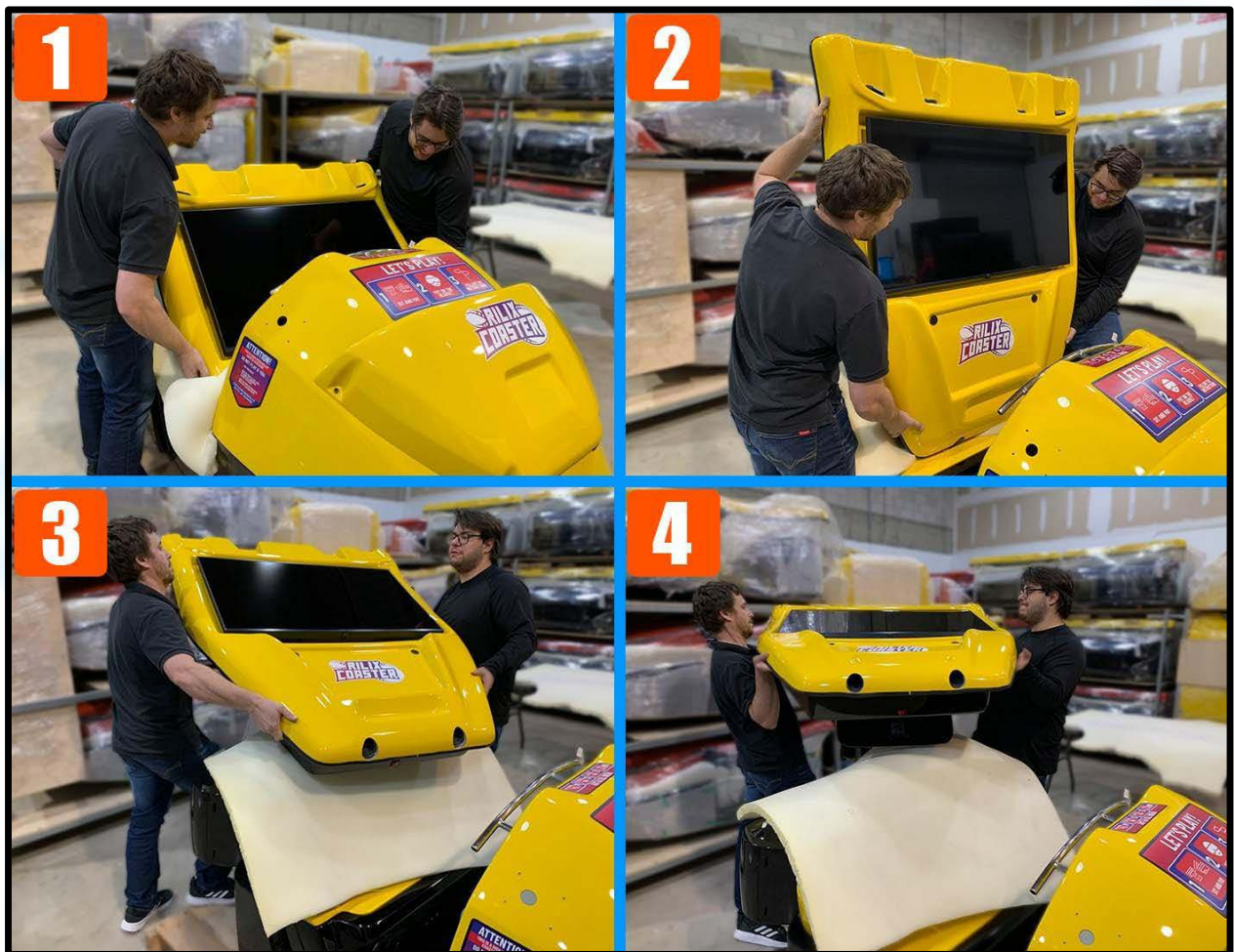


STEP 3 – REMOVING THE BLACK-DISPLAY

FIGURE 1 - Two people are required to remove the Back-display.

FIGURE 2 - Holding on both sides, lift the Back-display and place it on the simulator's seat.

FIGURE 3 - Lift the Back-display and place it on a flat surface.



STEP 4 - INSTALLING THE SUPPORT PIPES

FIGURE 1 - With the Back-display positioned on a flat surface (such as a table, for example), insert the support pipes into the two holes at the bottom of the Back-display. Then, push each pipe firmly until it reaches the internal limiter.

FIGURE 2 - Make sure the opening at the bottom of each pipe is facing forward.



STEP 5 – INSTALLING THE BACK DISPLAY ON THE SIMULATOR BASE

FIGURE 1 - After installing the support pipes, two people are needed to lift the back display to a vertical position.

FIGURE 2 - In a vertical position, place the back display in front of the rear of the simulator

FIGURE 3 - The back of the simulator has two holes where the pipes need to be placed. Lift the back display and fit the two support pipes into these holes.

FIGURE 4 - Align the two support pipes and make sure they reach the bottom of the base.



STEP 5.1 – ADJUSTING THE PIPES POSITION

After installing the support pipes, turn the pipe until the pipe's opening is facing forward, increasing the hole where all the wires will pass through.

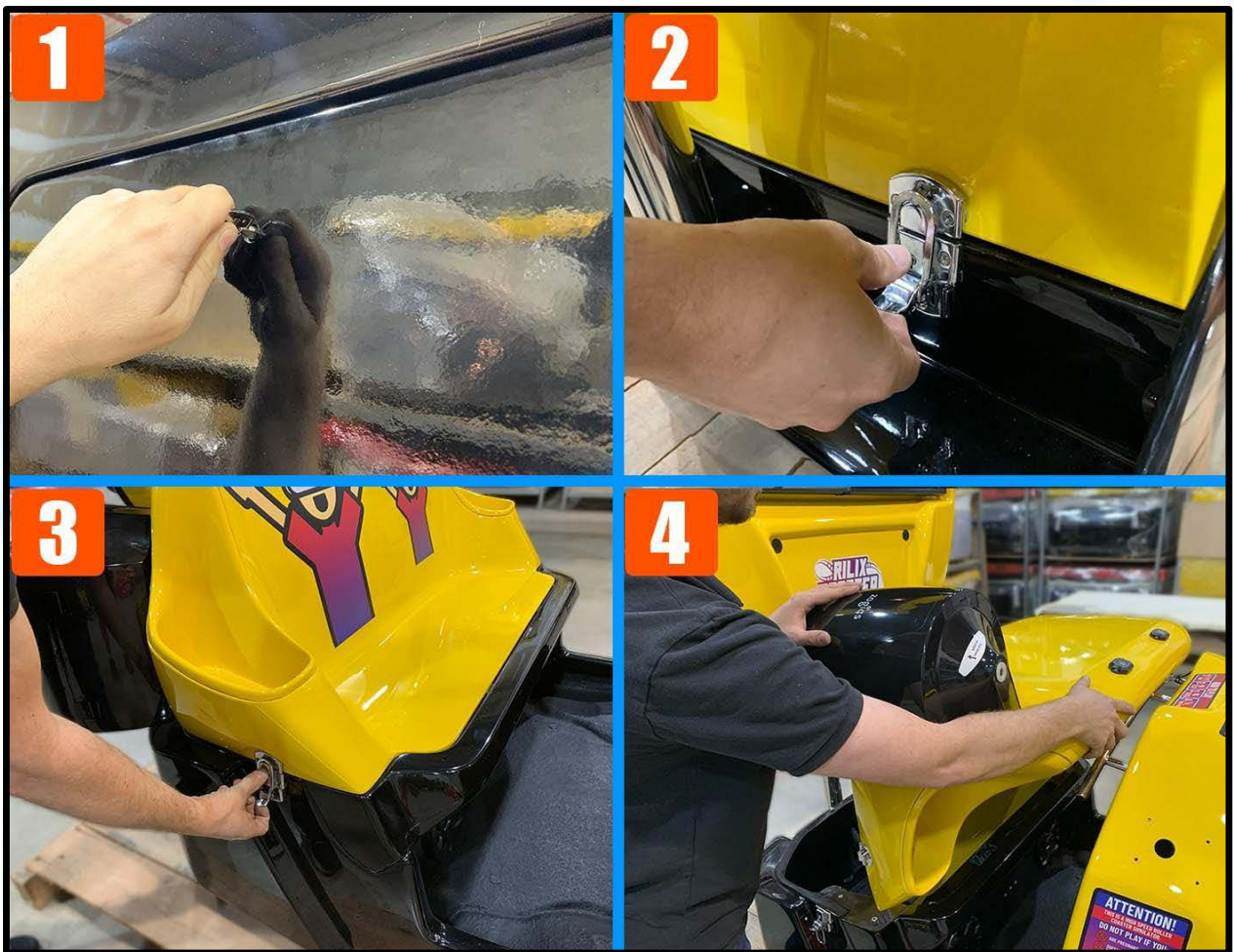


STEP 6 – OPENING THE BACK DISPLAY DOOR AND SEAT

FIGURE 1 – The back display has two rear access doors for electronic components. Use the key that comes with the product and open the top door.

FIGURE 2 and 3 – The simulator seat has four locking tabs. Open the four clips. Two are located on the back of the seat, and two on the sides.

FIGURE 4 – Move the seat from the back to the front by moving the back first, as shown in the picture.



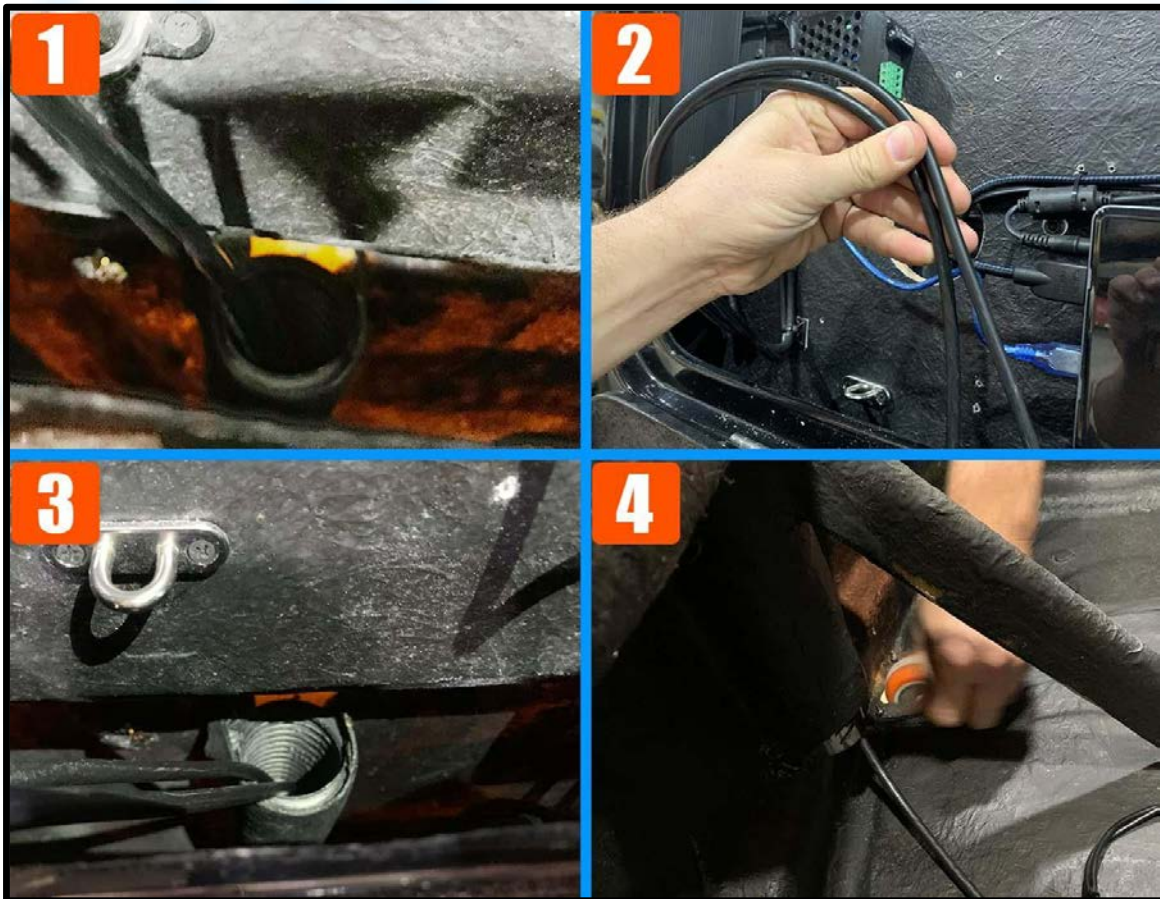
STEP 7 – INSERTING THE CABLE THROUGH THE INTERNAL BACK DISPLAY PIPE

FIGURE 1 – The inner part of the back display has two holes. And four cables will make the communication between the back display and the base of the simulator.

FIGURE 2 - Insert the wind cable through the pipe hole on the left side, inside the back display.

FIGURE 3 – The cable must pass through the entire length of the pipe and reach the base of the simulator.

FIGURE 4 – When the cable touches the simulator's base, pull until a good cable length comes out of the pipe.



STEP 8 – TOOLS REQUIRED TO ATTACH THE WIND SYSTEM CABLE TO THE LED CABLES

The LED cables are located under the seat. They need to be pulled up through the back display pipe to reach the connectors situated with the central computer parts. Therefore, it would help if you used the sound system cable to “hook” those LED cables through the pipe. To tie the sound system cable to the LED cables, a small zip tie, and a cutter plier will be required for the task, as shown in **FIGURE 1**.



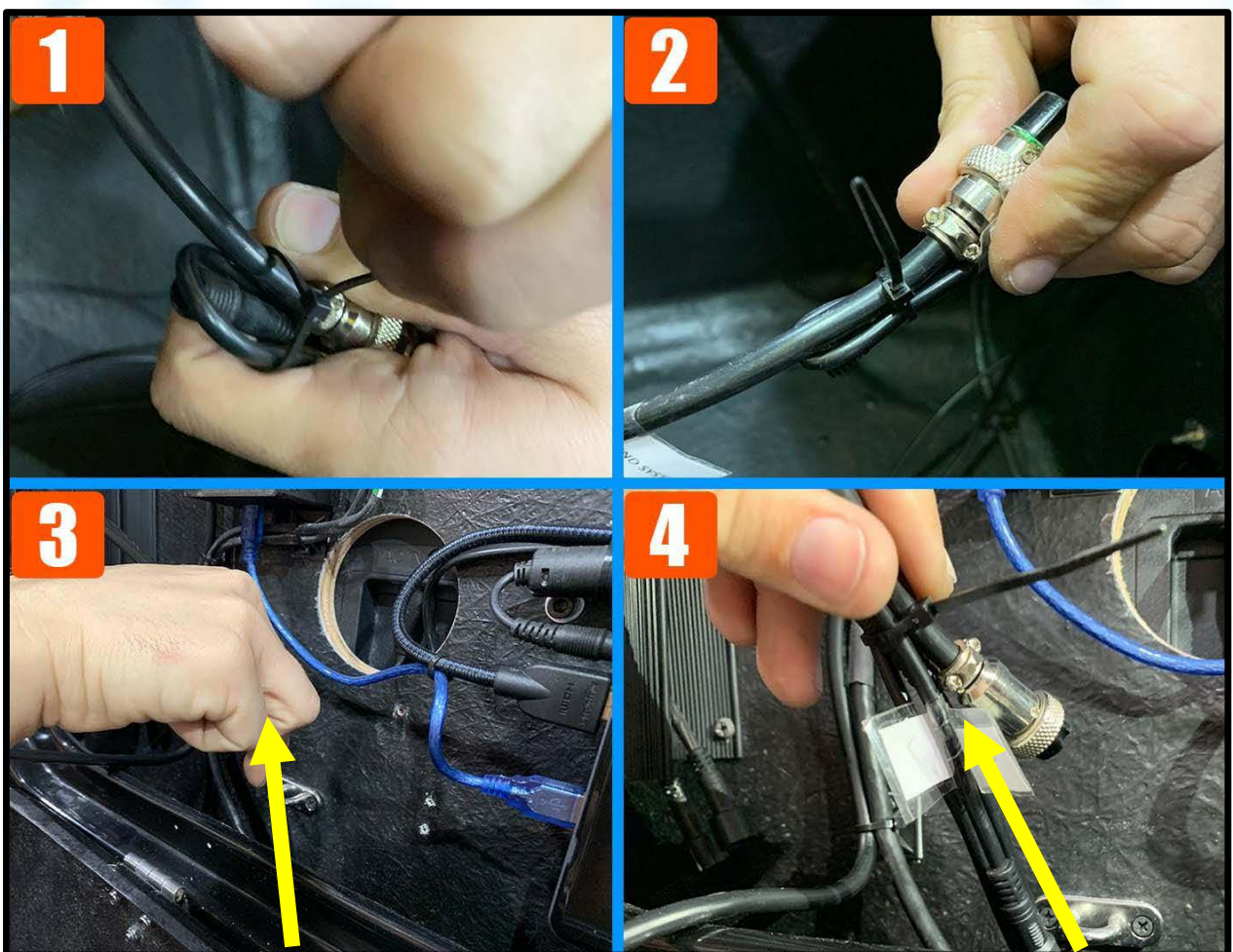
STEP 9 – TYING UP THE LED CABLES TO THE SOUND SYSTEM CABLE

FIGURE 1 – With the zip tie, tie both wires together.

FIGURE 2 - Ensure both cables are securely tied down before pulling the wind system cable.

FIGURE 3 - On the back of the back display, pull the wind cable through the pipe so that the LED cables come together.

FIGURE 4 - Ensure the LED cables run entirely through the pipe.



STEP 10 – CUTTING THE ZIP TIE

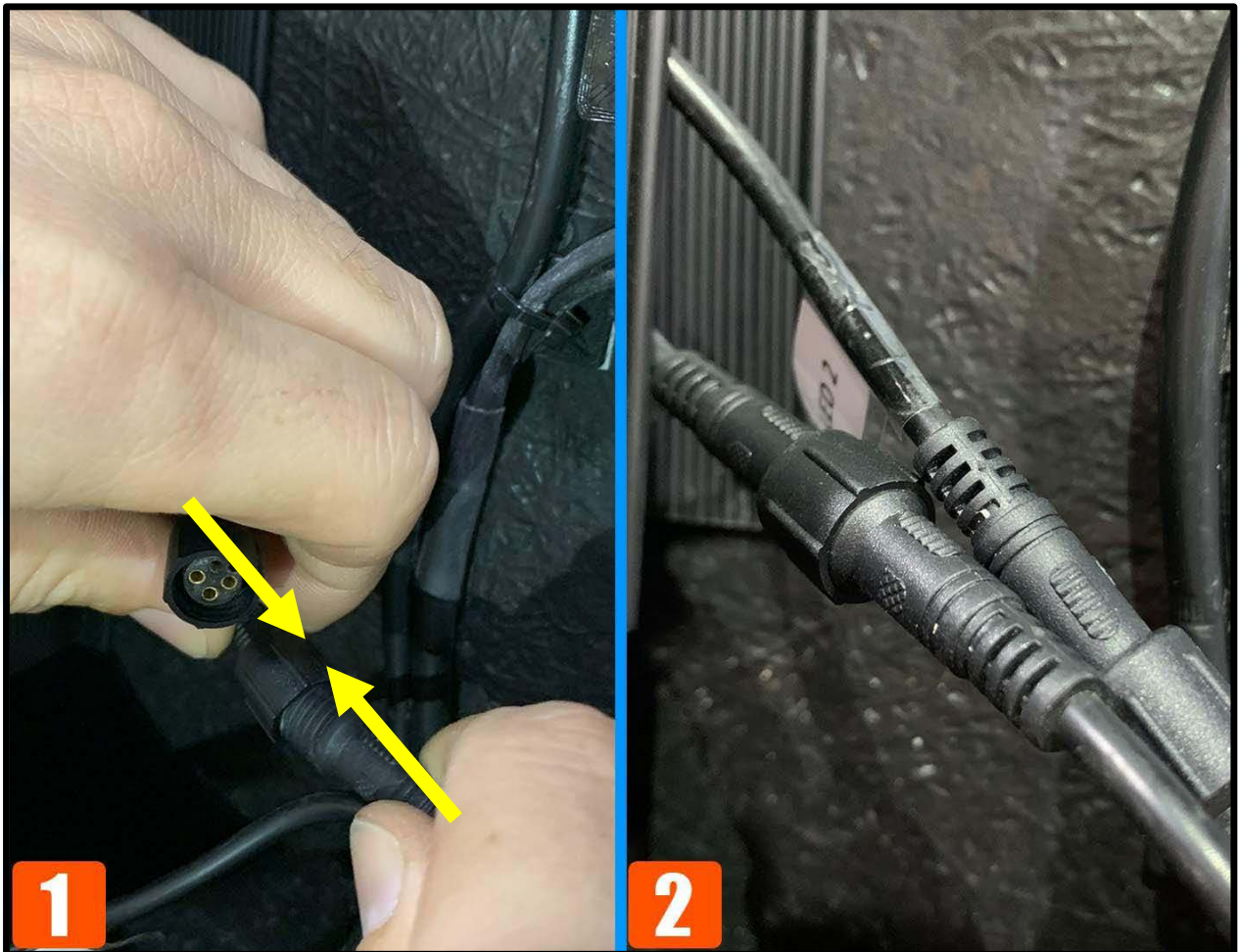
To connect the LED cables to the power, cut the zip tie to release both wires.



STEP 11 – CONNECTING THE LED CABLES TO THE POWER

FIGURE 1 – The connectors for the LED cables are located on the right side of the back display, usually inside a black cable organizer. Connect both LED cables and screw the lockers to secure the connection.

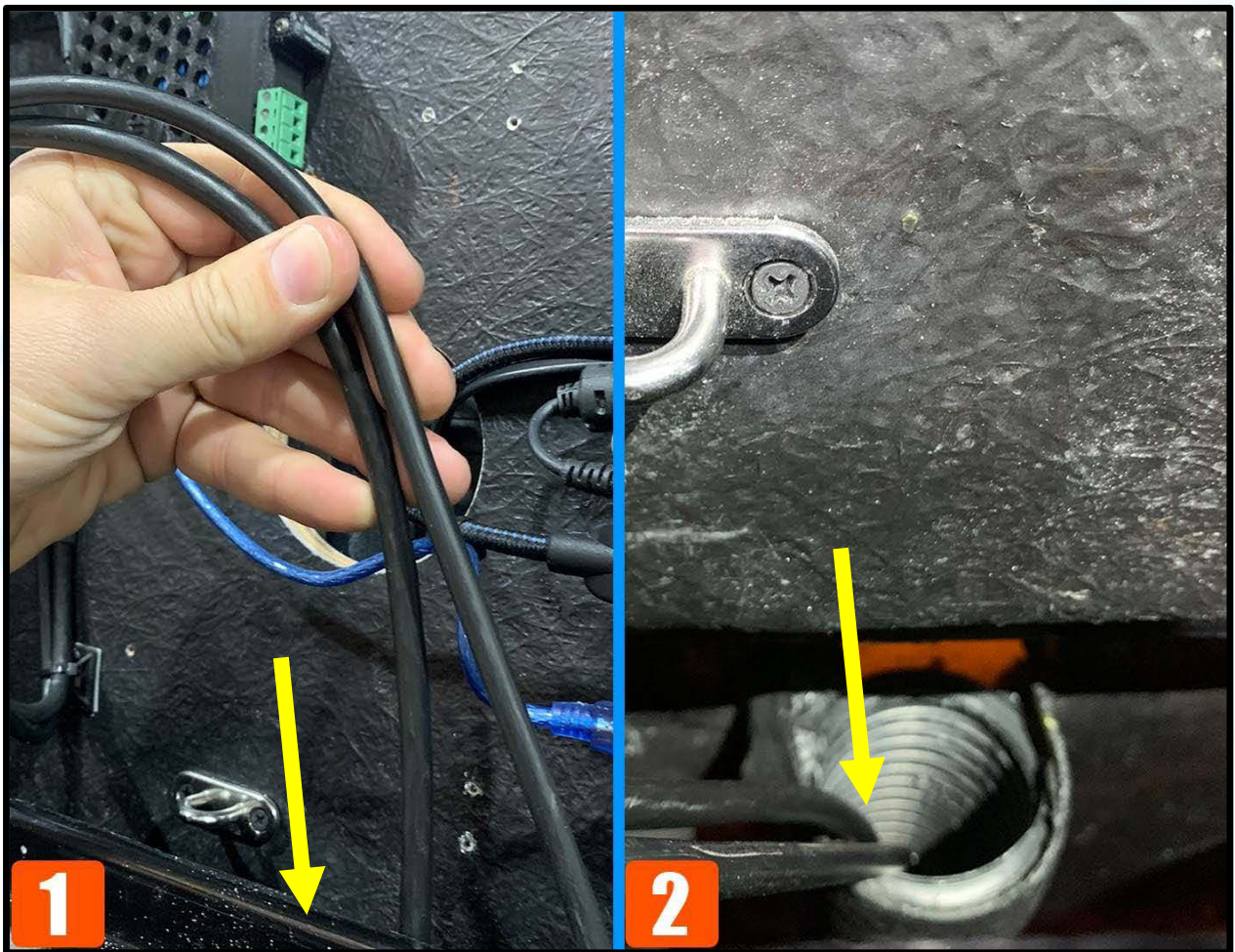
FIGURE 2 – The picture shows the way both LED cables are secure and ready.



STEP 12 – INSERTING THE CABLE THROUGH THE INTERNAL BACK DISPLAY PIPE

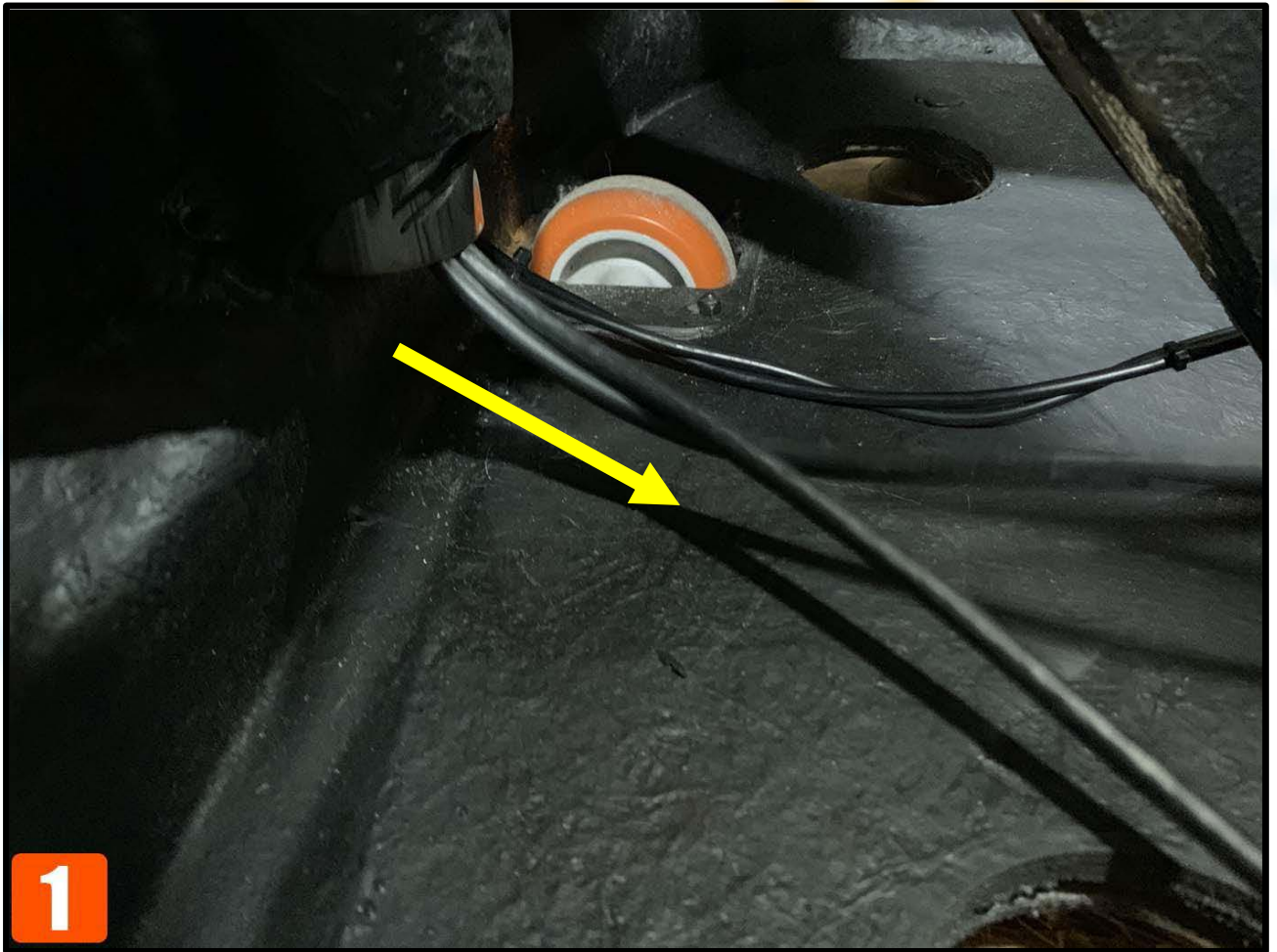
FIGURE 1 - Now that the LED cables are connected and ready, it's time to re-insert the sound system cable into the pipe inside the back display.

FIGURE 2 - Push the wind system cable through the left inner pipe until the cable reaches the base. If the cable is not going down, turn it clockwise to facilitate the passage.



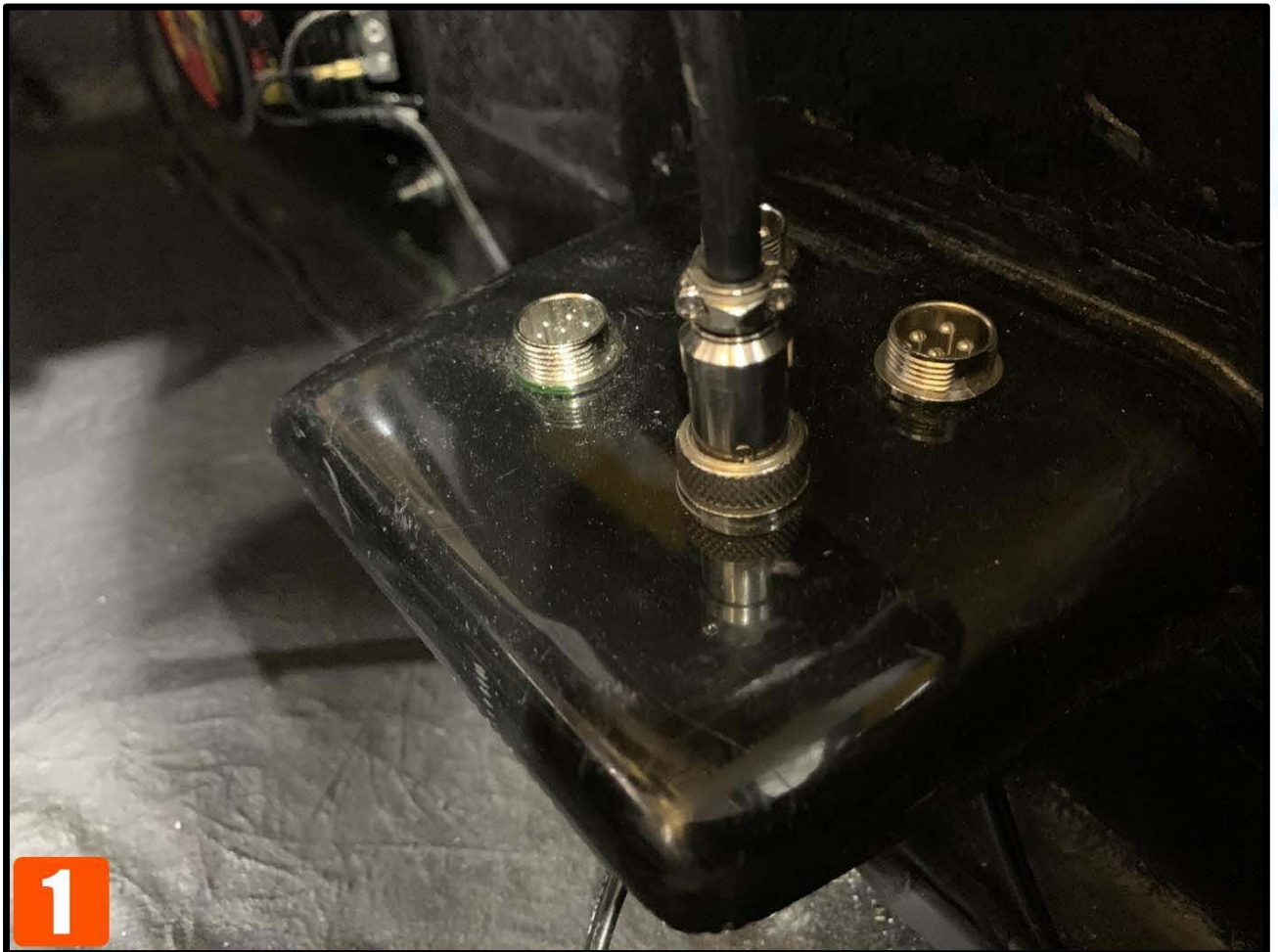
STEP 13 – PULLING THE WIND SYSTEM CABLE TO THE BASE CONNECTOR

Once the cable comes out of the pipe at the bottom, pull until all the cable length is available.



STEP 14 – CONNECTING THE WIND SYSTEM CABLE

There are four connectors available, each with a specific number of pins. Each cable will connect to only one connector; the wind system cable has a two-pin connector. Check the pin number of each connector before connecting each cable. Once you have identified the correct connector, connect the cable, and screw the lock by turning it clockwise.



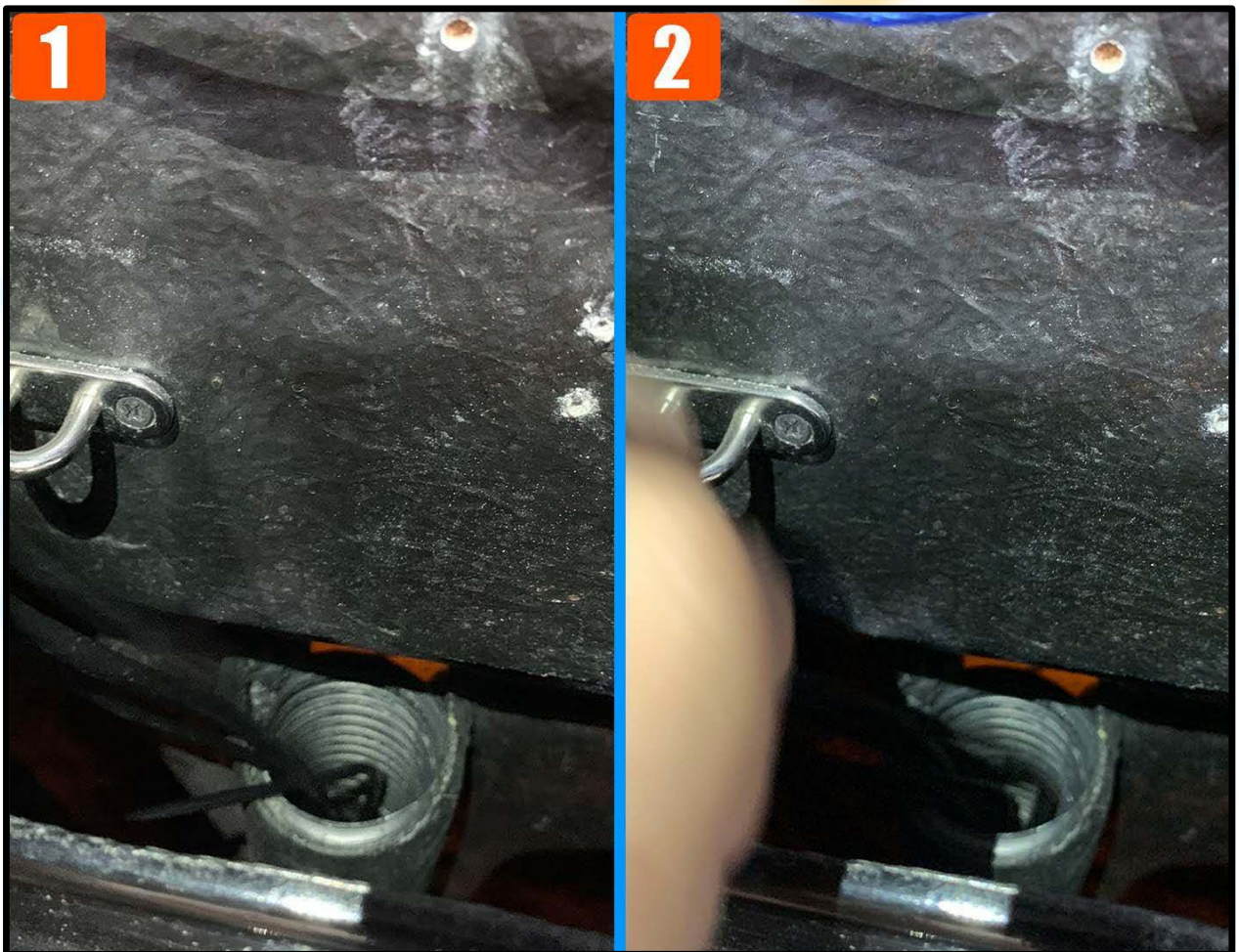
STEP 15 – CONNECTING THE PAYMENT SYSTEM CABLE

Repeat steps [12](#), [13](#), and [14](#) with the payment system cable. The payment system cable (for both swipers) has a connector with five pins.



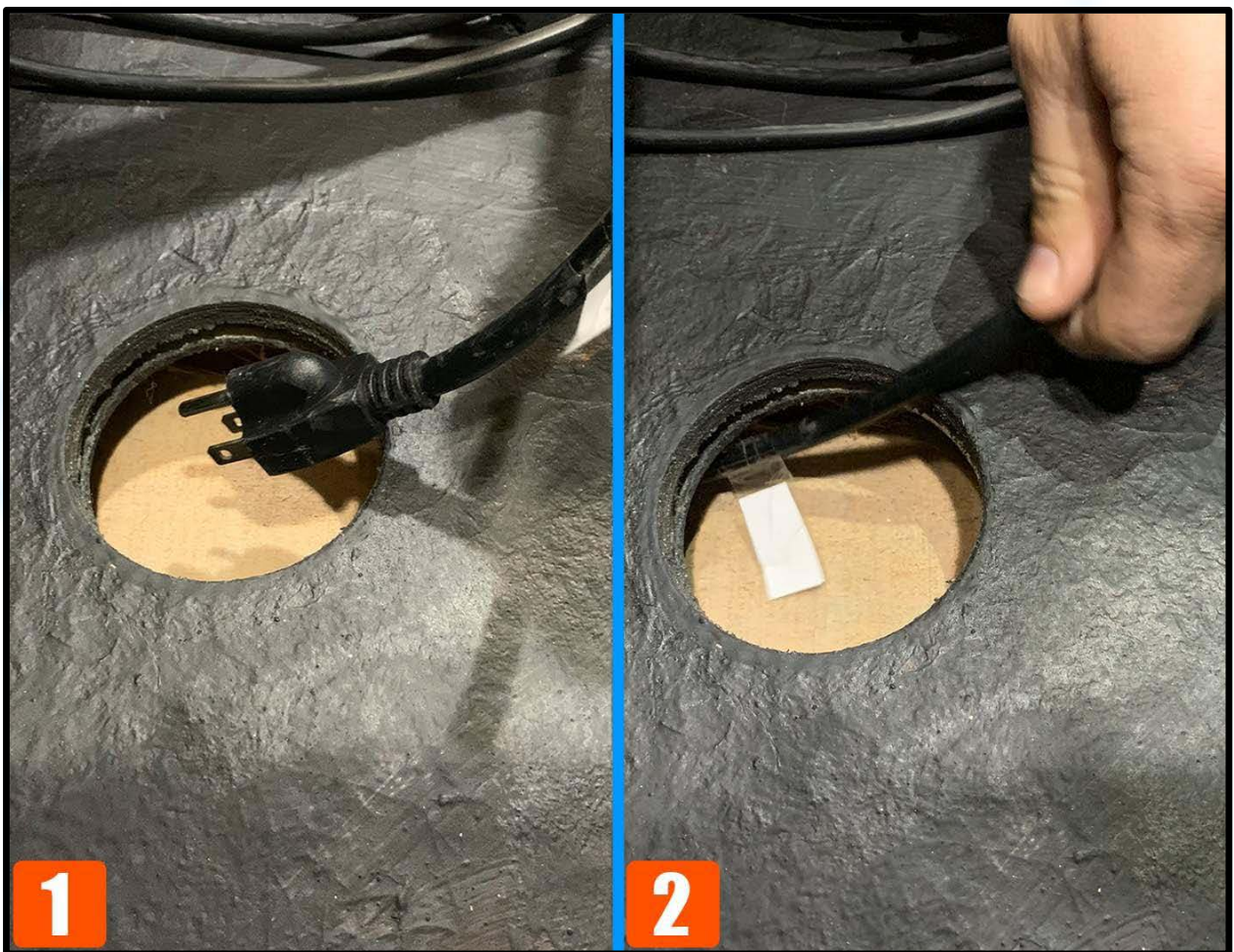
STEP 16 – INSERTING THE POWER CABLE THROUGH THE INTERNAL BACK DISPLAY PIPE

Insert the power cable through the pipe hole located on the left side, inside the back display.



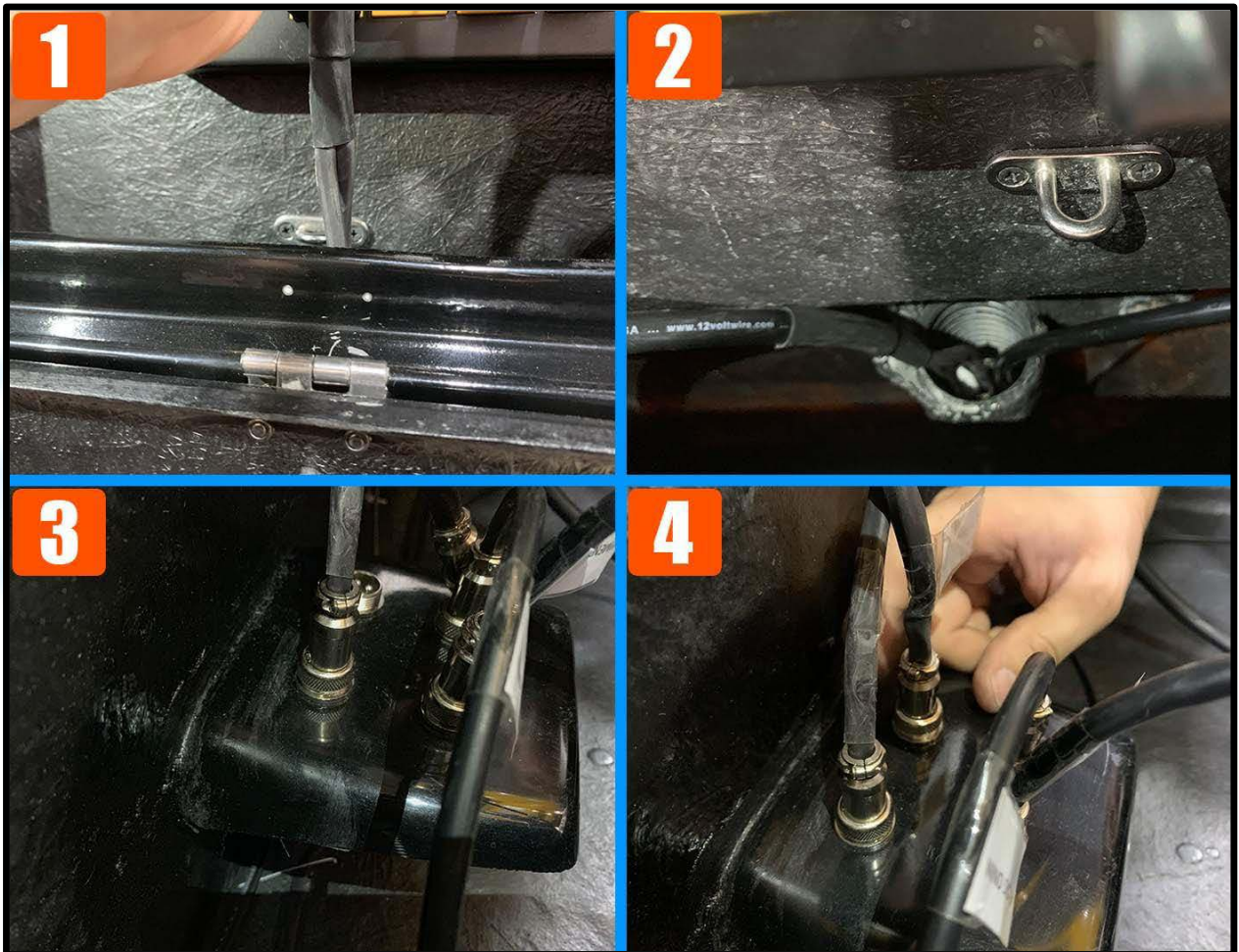
STEP 17 – CONNECTING THE POWER CABLE TO THE POWER OUTLET

As soon as the power cable reaches the bottom of the base, pull it until all the cable length is available. Next, please choose one of the holes available on the bottom of the floor and push it through so the power cable can reach outside of the machine. Then, connect the power cable to the power.



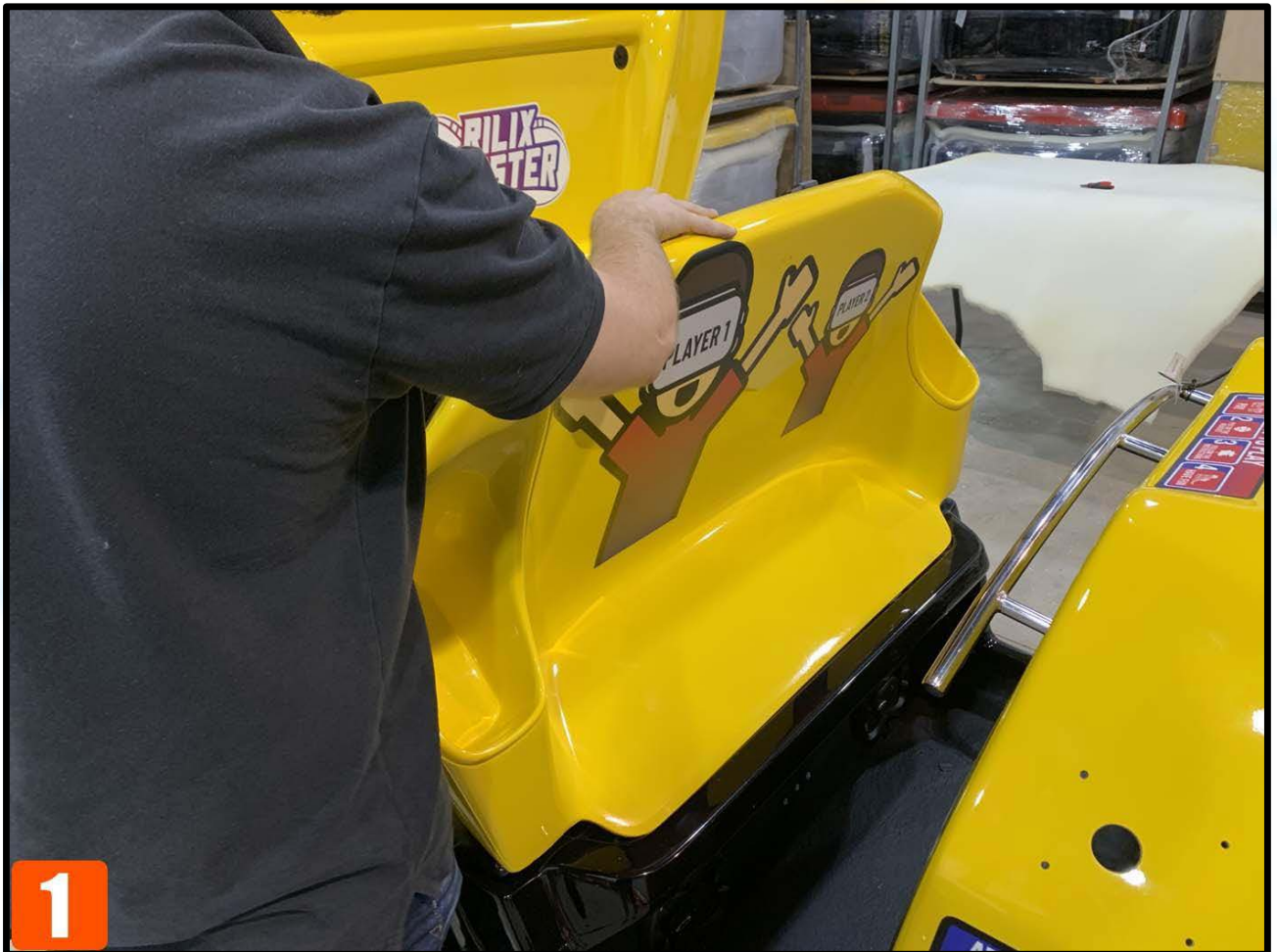
STEP 18 – CONNECTING THE SOUND CABLE TO THE BASE

Follow the same method used to connect the *wind system* cable and *payment system* cable to connect the sound cable. The sound cable has two connectors, one with three pins and one with four pins.



STEP 19 – CLOSING THE SEAT

After having all four cables connected, and the power cable set up, the bottom of the seat is ready. Next, close the seat by moving the seat from the front to the back, ensuring that the seat is well-aligned with the base.



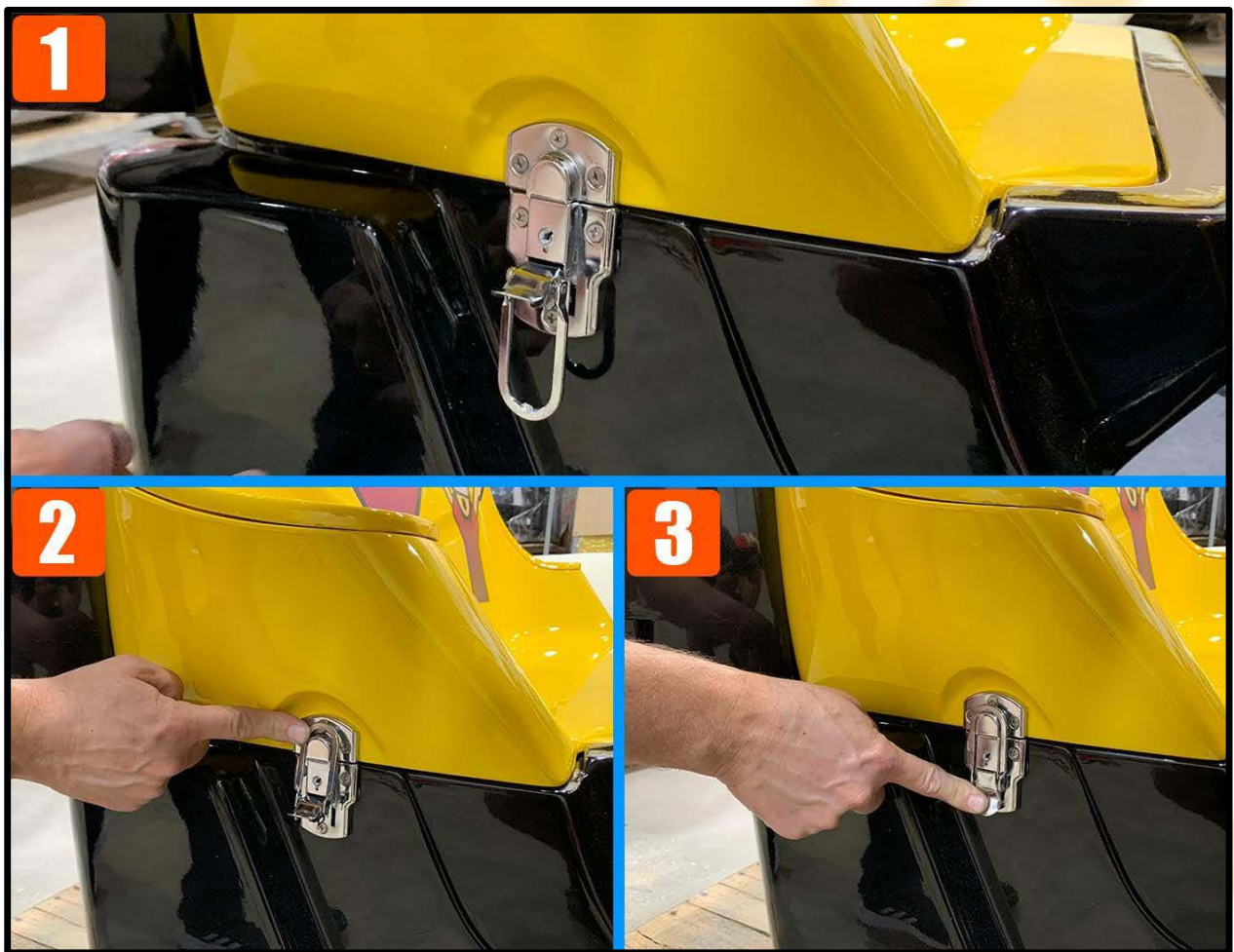
STEP 20 – CLOSING THE LATCHES

To secure the seat to the base, close all four latches.



STEP 21 – LOCKING THE LATCHES

The seat latches can be locked to avoid customers opening the seat. The keys from the latches are available with the main keychain that goes with the Rilix Coaster.



VR HEADSET INSTALLATION

STEP 1 – INSTALLING THE HEADSETS

To install each headset, first secure the device by placing it on the goggle holder located at each side of the seat.

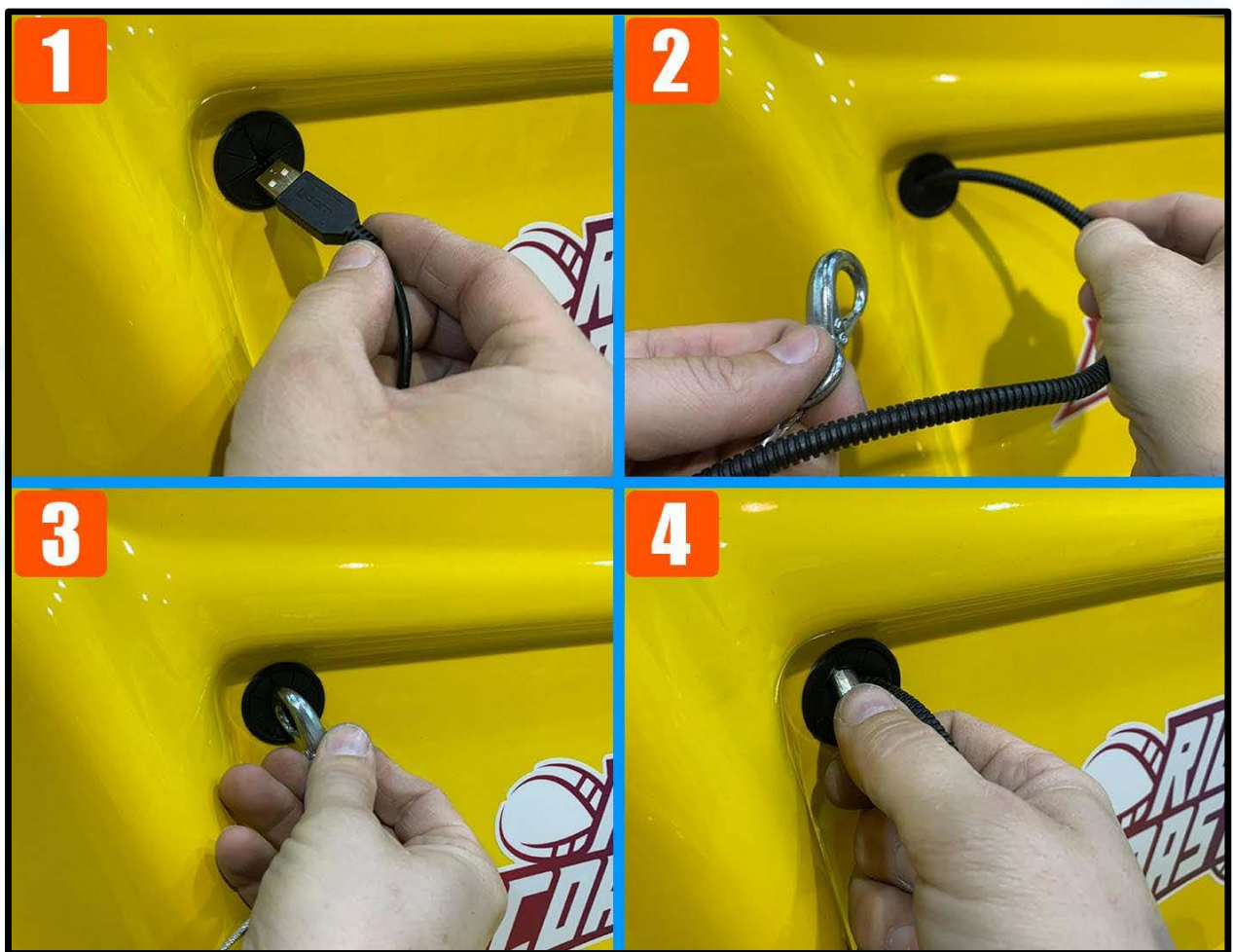


STEP 2 – INSERTING THE HEADSET CABLE THROUGH THE BACK DISPLAY

FIGURE 1 – Insert the USB cable into the grommet.

FIGURE 2 – Continue pushing the USB cable until you reach the hook.

FIGURE 3 and 4 – Insert the hook into the grommet.



STEP 3 – GRABBING THE HEADSET CABLE FROM INSIDE THE BACK DISPLAY

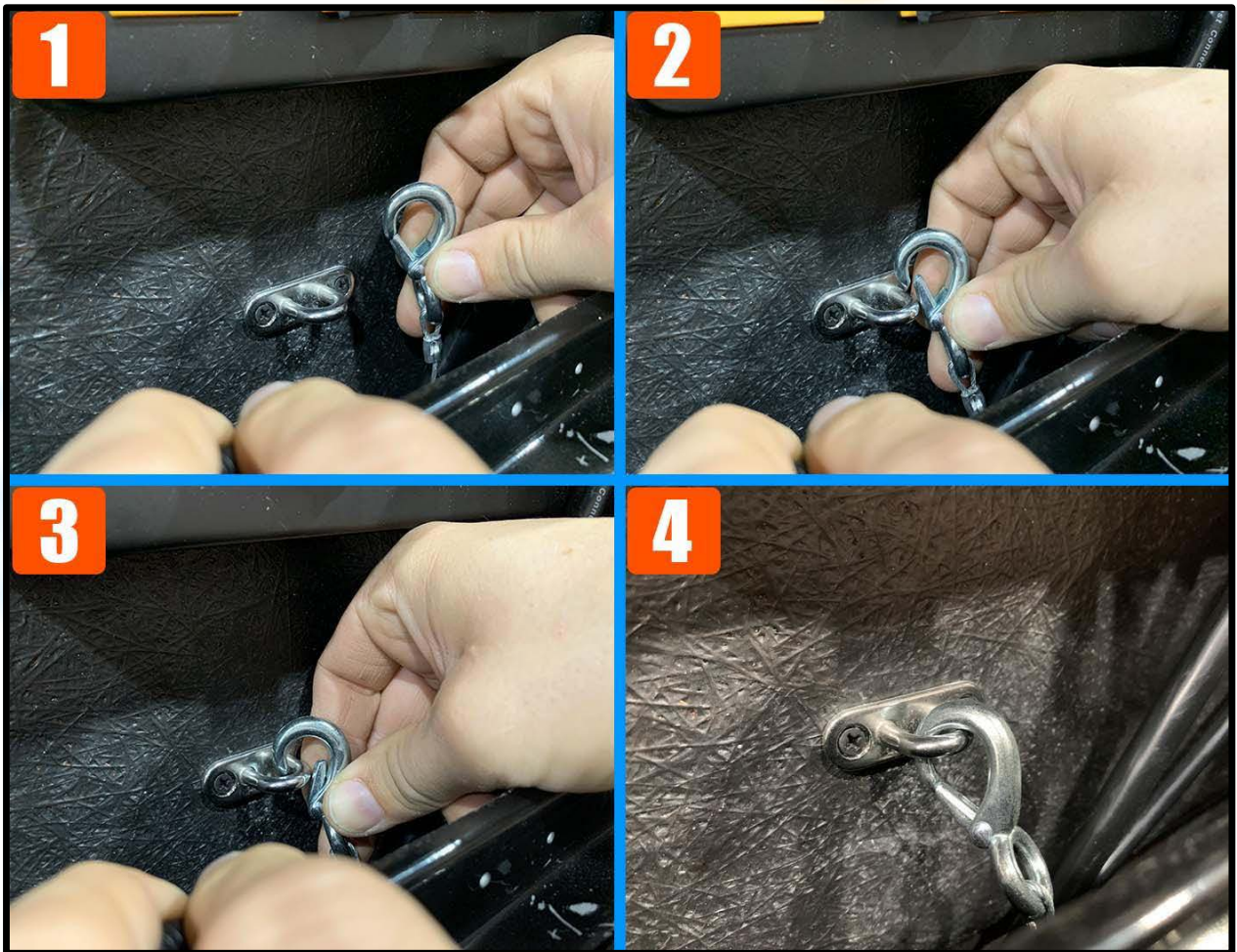
As soon as both the USB cable and hook are inside the back display, grab the cable to connect it to the computer and secure the headset to the machine.



STEP 4 – ATTACHING THE HEADSET TO THE BACK DISPLAY

FIGURE 1, 2, and 3 – Attach the hook to the back display by snapping it to the attached hanger.

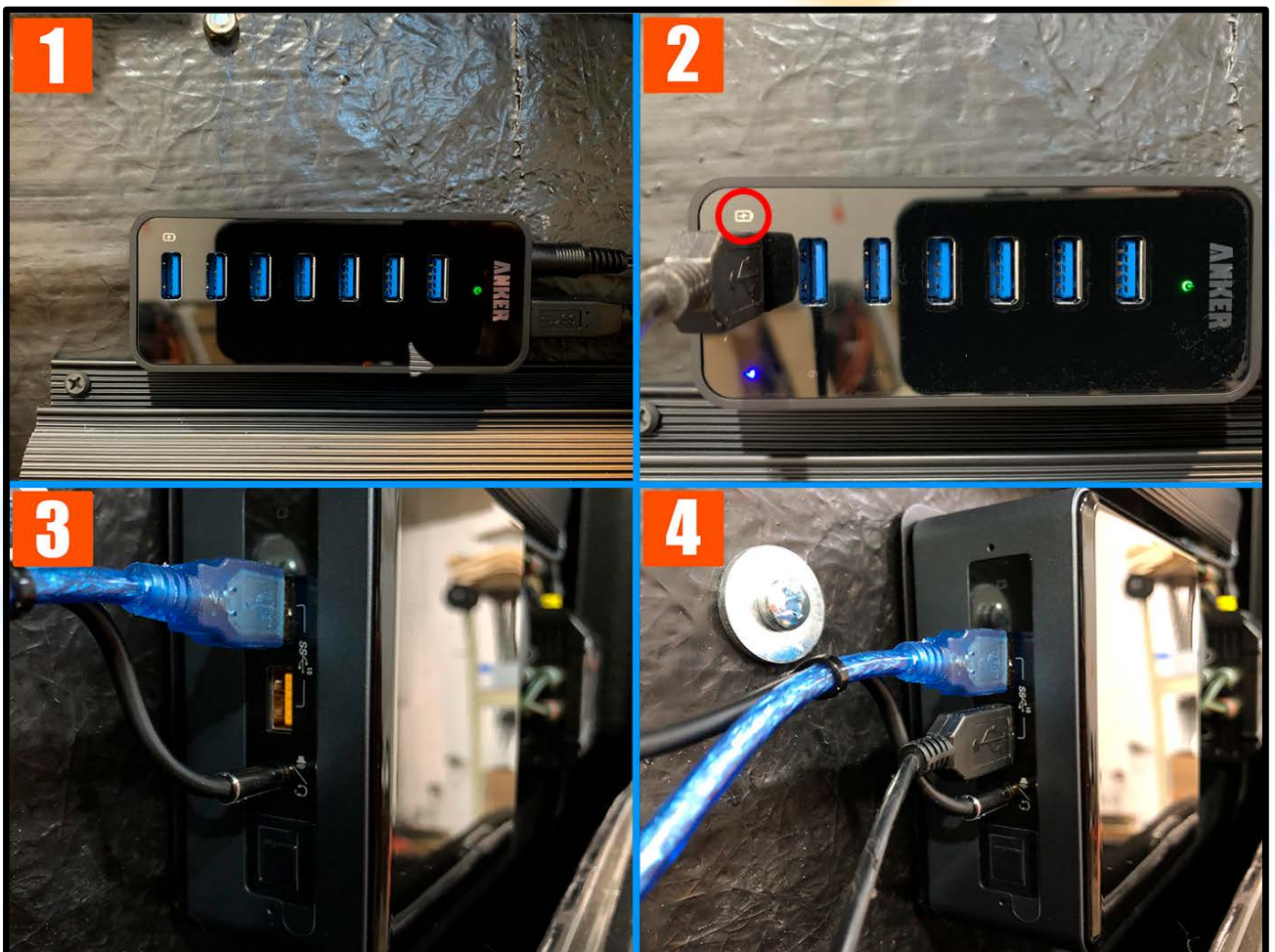
FIGURE 4 – The picture shows the hook well attached to the hanger.



STEP 5 – CONNECTING THE USB CABLE TO THE COMPUTER

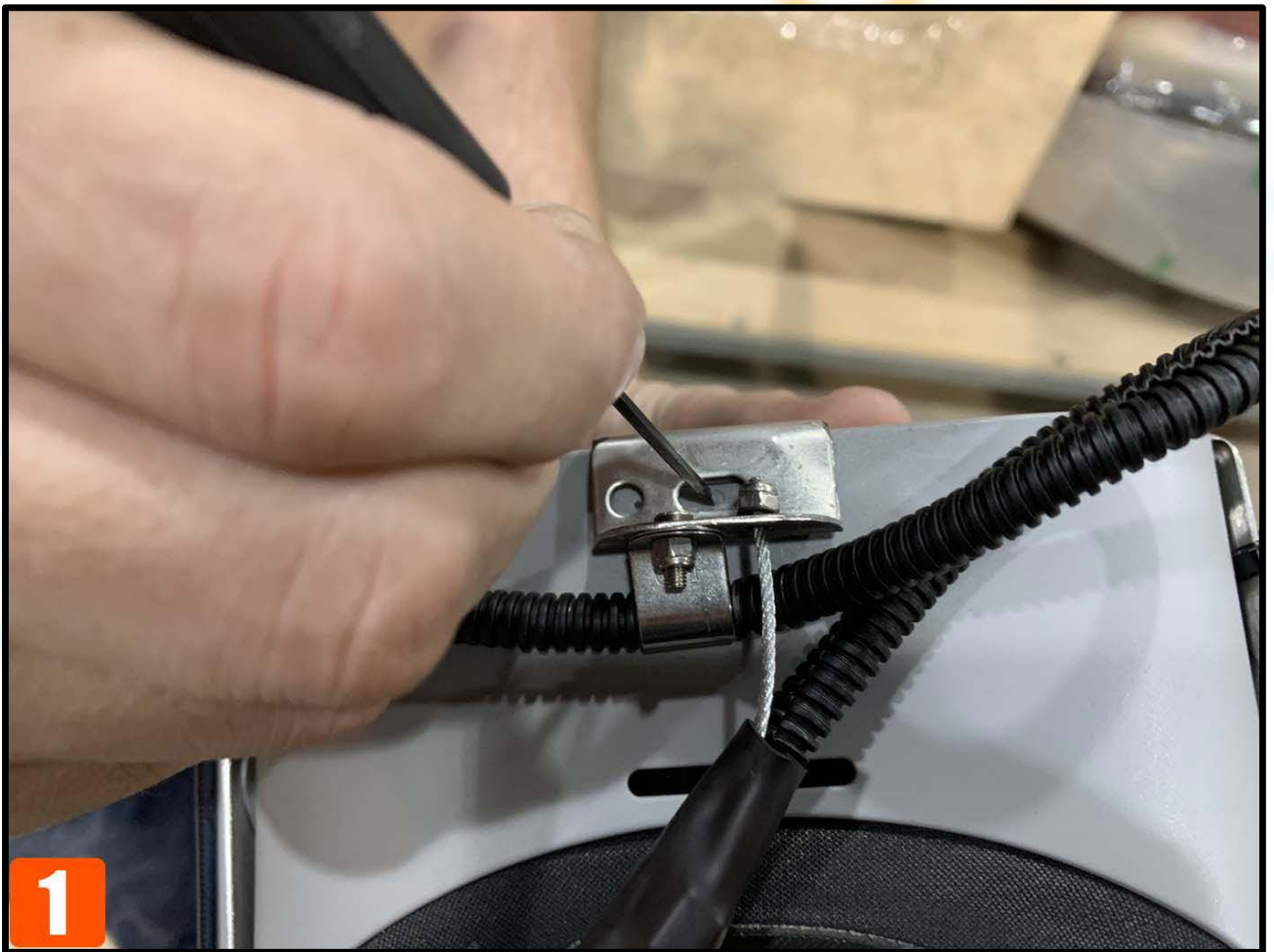
FIGURE 1 and 2 - Connect the first headset's USB cable to the USB HUB.

FIGURE 3 and 4 - Connect the second headset's USB cable to the computer USB port (preferably to the orange USB port).



STEP 6 – TURNING THE HEADSET ON

Using a small tool (like a key or a small screwdriver), press the power button for three seconds. The button is located on top of the headset, under the metal frame.



STEP 7 – TURNING THE SIMULATOR ON (INTERNAL BUTTON)

Switch the power button located on the power strip inside the back display compartment.



STEP 8 – CLOSING THE BACK DISPLAY DOOR

After having the system on, close the door using the set of keys that comes with the Rilix Coaster.



CONNECTING THE RILIX COASTER TO THE INTERNET

STEP 1

Grab the Rilix Coaster keyboard (included) and turn it on by switching to the left:



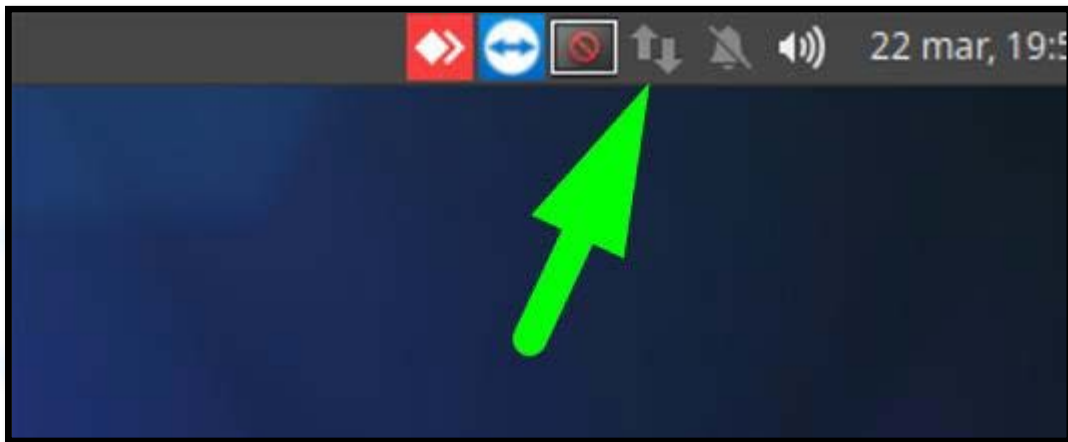
STEP 2

To reach the Coaster's desktop and close the game, press the keys **Fn + Alt + F4**:



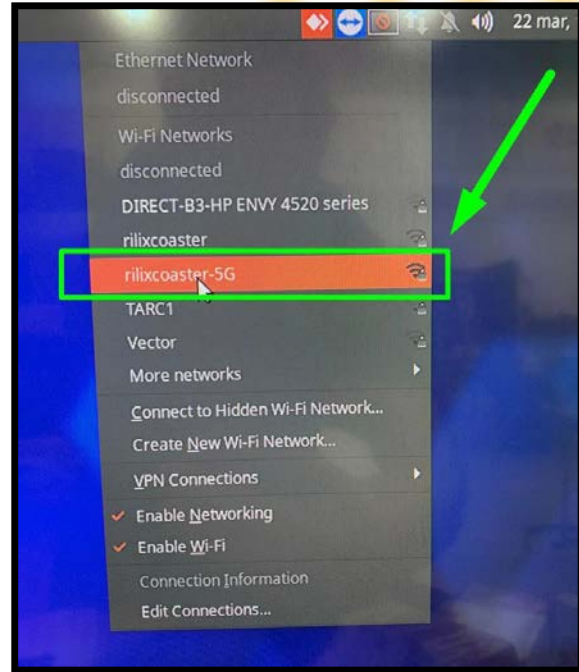
STEP 3

On the desktop, look for two **up/down arrows** on top right corner of your screen; it's the WIFI icon:

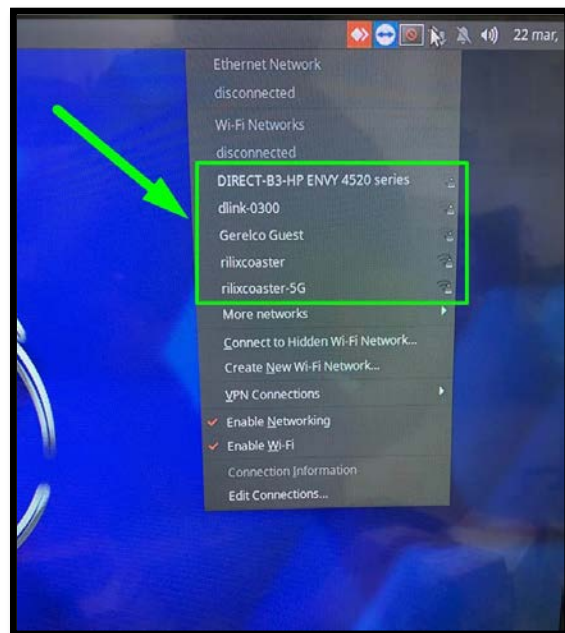


STEP 4

Double click to open the WIFI icon,
and look for the WIFI of your preference:



After finding your WIFI network,
double click to open, like the example:



STEP 5

Type your password (if required):

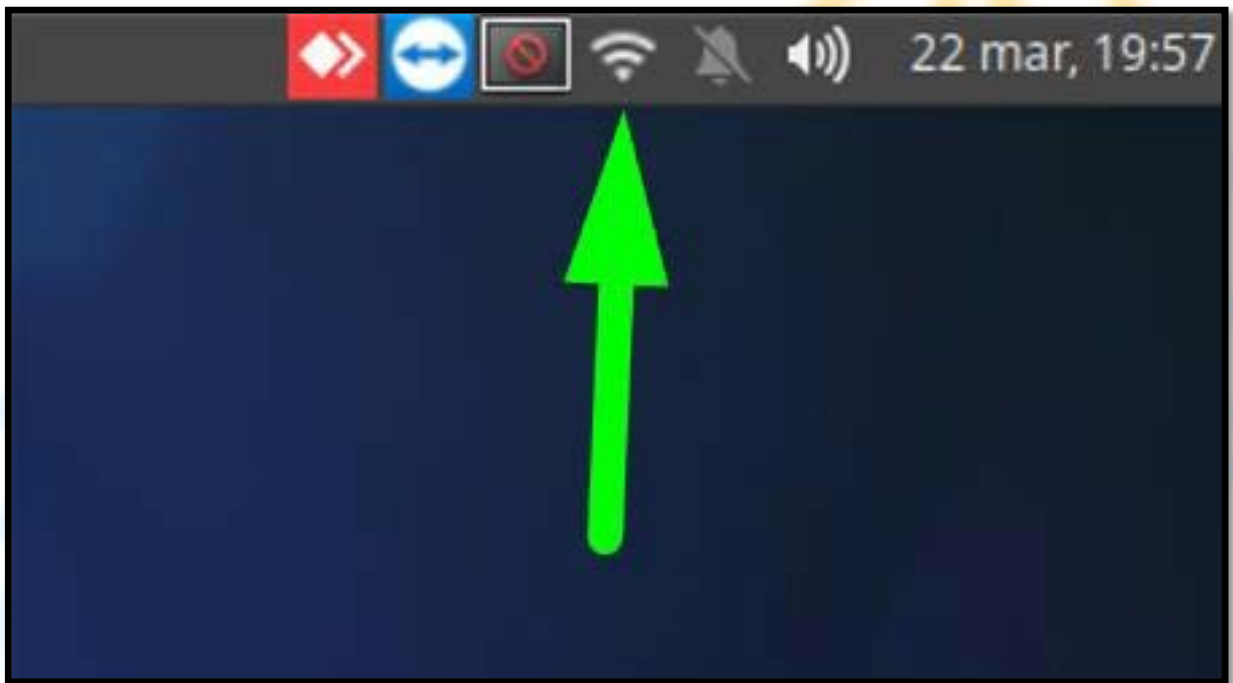


After typing your password, click on **connect**:



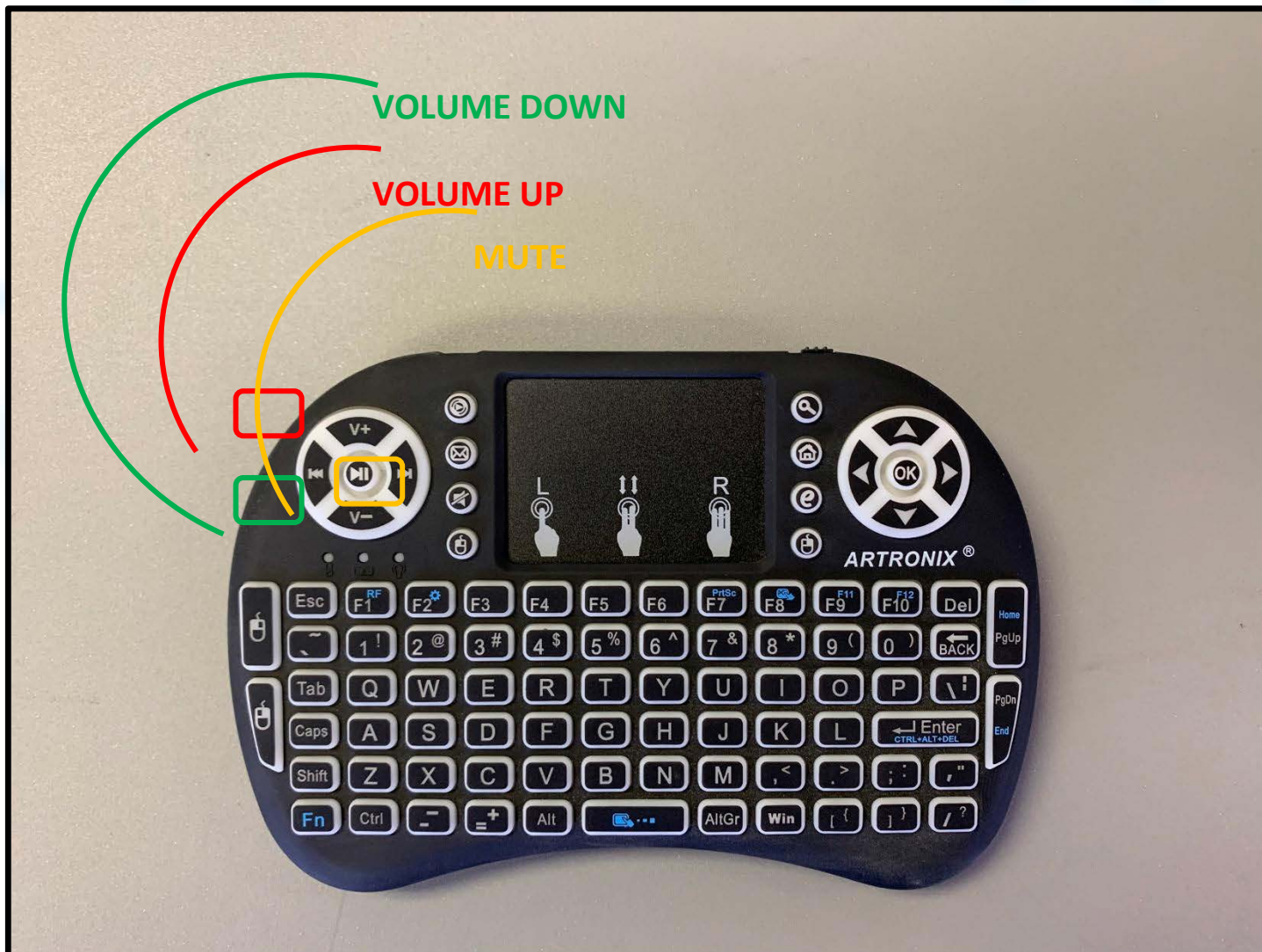
STEP 6

After successfully connecting the Rilix Coaster to the WIFI, the two arrows icon will turn to a regular WIFI icon, as follows the example below:



ADJUSTING THE VOLUME

You can adjust the Rilix Coaster volume using the keyboard. Turn on the keyboard and then use the buttons displayed below to increase, decrease the volume:



CONTACT INFO

If you need help with any of the steps in this manual, you can contact Rilix at the following numbers:

(407) 227 2435

(772) 874-3311

To contact Andamiro USA, please email sales@andamirousa.com or service@andamirousa.com.

SpongeBob VR Bubble Coaster is manufactured by Rilix and marketed and sold by Andamiro USA Corp.

