

PLAYBOX

by PLAYMIND

Immersive Ball-Toss Arcade Platform

High grossing
attraction



A new generation of arcade games



High revenue,
fast ROI



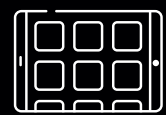
Up to
6 players
of all ages



No attendant
required

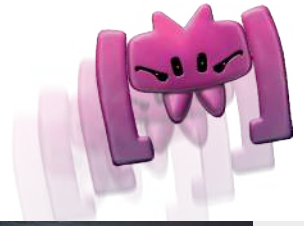


Giant HD
screen



New games
every year

THE PLAYBOX



The PLAYBOX is the ideal turnkey redemption-ready arcade platform for Amusement Parks and FECs in any location.

With a full library of high-quality ball-tossing games available, it is designed to provide an immersive experience for visitors of all ages.



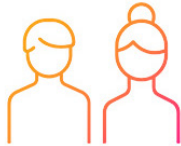
Featured at FECs & Parks around the world



With its large bright LED screen and surround sound system, the PLAYBOX is eye-catching and has proven to be a true crowd gatherer that drives repeat business and fast ROI.

Operators, time to offer a unique & fun experience to your visitors, with no attendant required!

KEY FEATURES



Up to 6
players



Repeat Customers
& ROI



Giant LED
wide screen



1.5 to 3 min
games



No attendant
required



15+ games
catalog



High pace
physical gameplay



Redemption system
enabled



Compatible
with coin-ops
and card readers



Worthwhile acquisition driving repeat customers & ROI

- Constantly in top 20% grossing attractions.
- Higher ranking than other redemption games.
- Payback within 4 to 8 months.

Turnkey space-optimized installation to maximize efficiency

- Eye-catching attraction
- High quality gaming with surround sound.
- Immersive & interactive fun for all ages.

Future-proofed with varieties of curated games available

- Long life-cycle hardware.
- New games released every year.
- Continuous system maintenance & update.
- Technical support available.
- Management platform available.

GAMES

FULL LIBRARY OF HIGH QUALITY GAMES



Game modes



Competitive



Co-op

Game categories



Classic



Family



Sport



Action



Seasonal



Retro



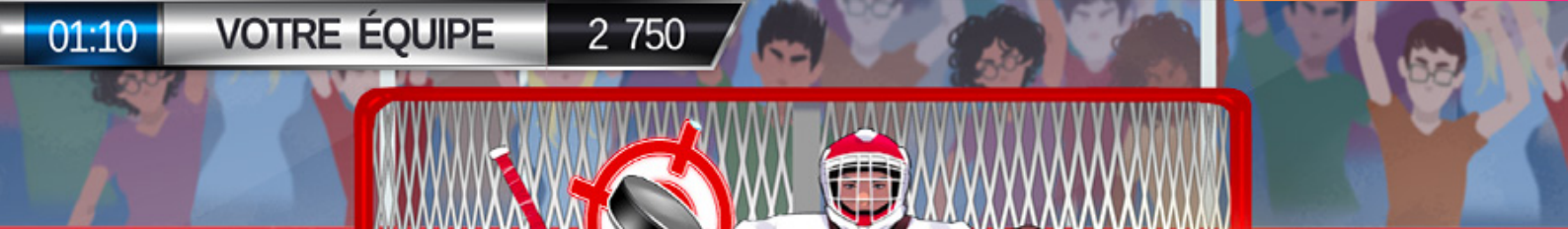
TOP 4
PLAYBOX
GAMES

ZOMBIES!

01:10

VOTRE ÉQUIPE

2 750



PLAYBOX

250

PLAYBOX

SLAPSHOT SHOOT-OUT



2:54

RIFT EXPLORER



550

1:43

WINTER MAYHEM



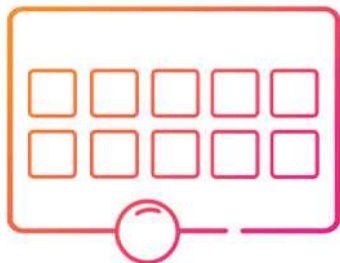
HOW TO PLAY



1 - Pay to join

Up to 4 or 6 players can join to take part of the next round.

Scan card or insert coin to pay.



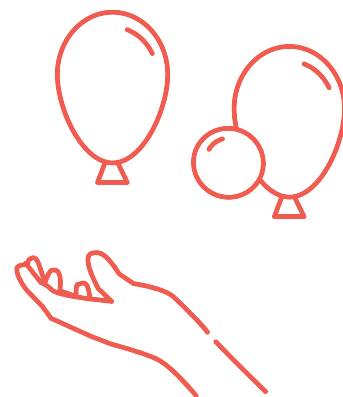
2 - Select a game

Each PLAYBOX has a library of competitive and co-op games available for players to select.

3 - Shoot at targets

Throw soft-balls at moving targets on screen to score points.

Redemption payout can be set by operator. Each round, more paying players will award additional redemption points.

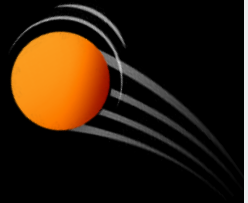


PERFECT FOR FECS & AMUSEMENT PARKS

Multiple formats to fit any location



4 players



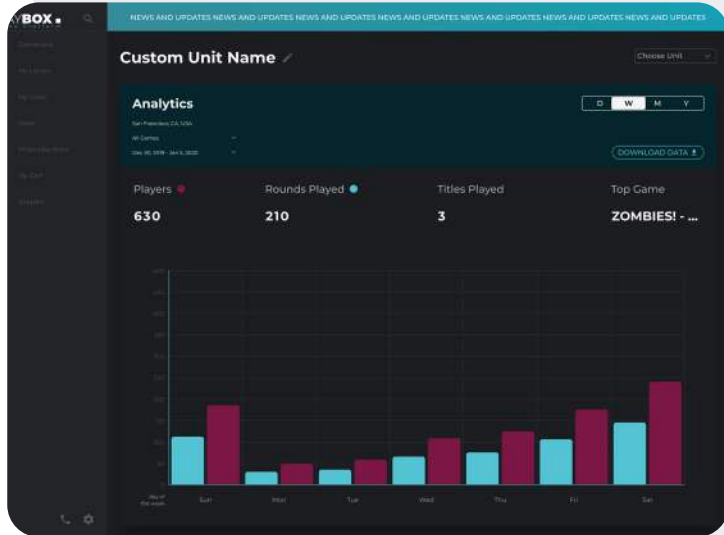
6 players



Indoor and Outdoor available



MANAGEMENT & ROI



Dashboard

Gives access to the unit(s) and games analytics.

Store and cart

Displays games catalogue including description, game modes, categories, rules, videos and pictures.

My Units

Shows all units owned by operators, real-time technical diagnostic and POP updates.

My Library

Shows all the games available on each PLAYBOX.

Support

Includes FAQs, instruction manuals and a link to our available 24/7 technical service team.

Account settings

Shows and allows to manage operator's account.

CUSTOMIZATION OPTIONAL



- Branded box & projectiles
- Custom games
- Custom screen content
- Game reskin
- Language adaptation

PLAYMIND

Award-winning entertainment studio

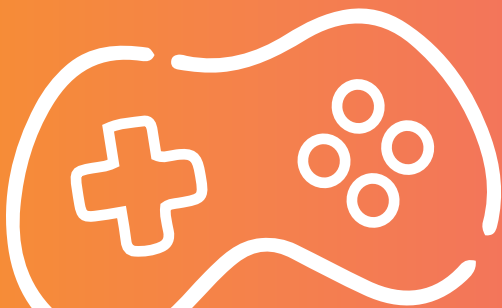


Interactive Entertainment Products

PLAYMIND has created the hardware, software and platform for game systems designed for Family Entertainment Centers, Location-based entertainment and Amusement Parks.

Services

From advergaming, brand activation to virtual reality and augmented reality content, PLAYMIND offers a wide range of services in the field of entertainment.



Digital Platforms

PLAYMIND produced its first game title The Inner Friend, available on the Steam platform, Xbox and PlayStation game consoles.

LET'S TALK

CONTACT YOUR LOCAL DISTRIBUTOR



PLAYBOX 
by PLAYMIND